



# AshGrafix Display Unit

Instructions for Upgrading AshGrafix Software



ENGINEERING YOUR SUCCESS.

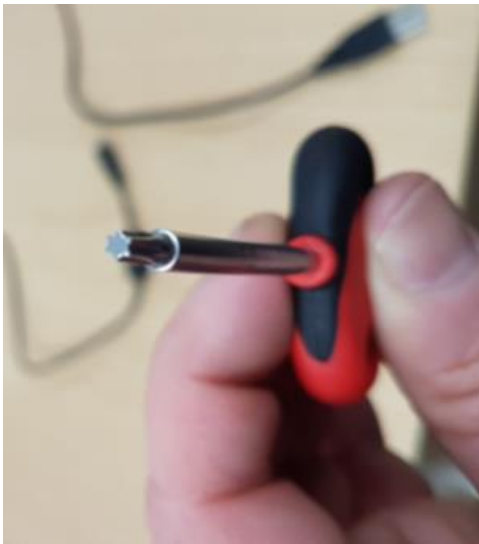
## Instructions for Updating AshGraffix Software

This document describes how to upgrade the software within an AshGraffix display unit from a single installation image file.

This process involves connecting to an **internal** USB connector which gives access to the internal flash memory of the unit. To do this, a side panel must be removed and a switch used to set the unit into the correct programming mode. A computer is then used to copy the installation file to the AshGraffix and to monitor that the operation has been successfully completed.

### Tools Required

- A small flat bladed screw driver to remove the dust caps.
- A Torx star shaped wrench – Size T10



- A USB lead, type Male USB A connector to Male USB MINI B connector



- The installation file, **AshGrafixVx\_xx.vfu**, where **x\_xx** is the version number of the image, e.g. *AshGrafixV7\_07.vfu*.
- A computer or laptop device with USB port to copy the file to the AshGrafix display unit.

## Installation

**IMPORTANT: Before Starting, please ensure that the unit is switched off.**

### Step 1 – Remove dust caps from side panel

The panel on the opposite side of the side that contains the power switch and connectors needs to be removed. The screws that retain the panel are protected by dust caps that need to be removed. There are 4 caps.



To remove a cap, gently press a small flat bladed screw driver or similar to one edge of the cap which will pop it out of the hole.



## Step 2 – Remove Torx Screws

After the caps have been removed, unscrew the 4 Torx screws holding the panel in place.

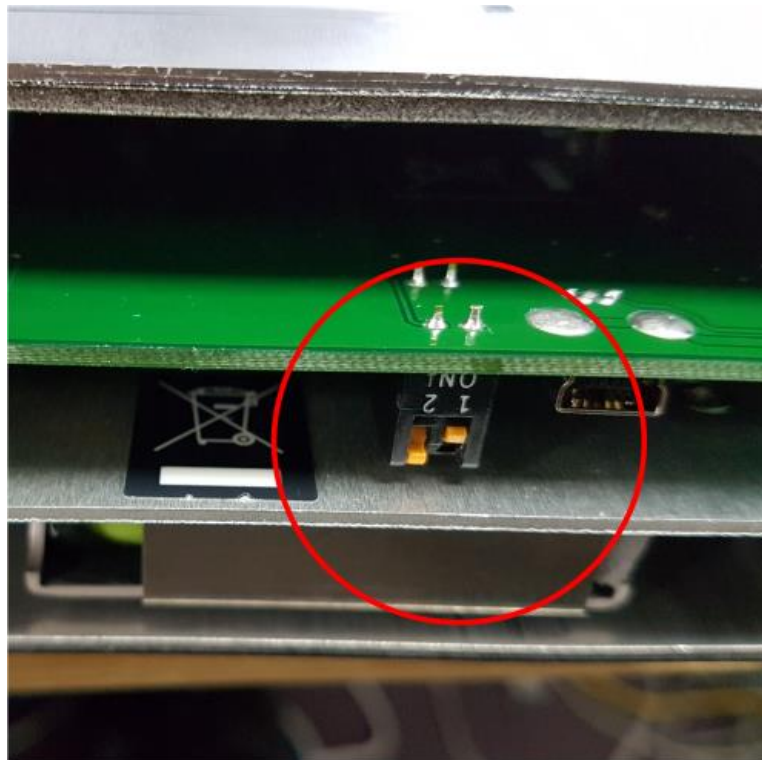


**IMPORTANT:** When removing the actual panel, the circuit boards within are not attached as it is the panel that holds them in place. **DO NOT LET THE CIRCUIT BOARDS SLIDE OUT OF THE MAIN BODY.** These boards are connected by a delicate ribbon cable which could become disconnected or damaged if the circuit boards slide. Do not turn the body so that the circuit boards are to the bottom or if this is necessary, take steps to prevent the board sliding, e.g. using your thumb or fingers



### Step 3 - Switch unit into Program Mode

Using a small flat bladed screw driver, set the mode switches to the positions shown in the photograph below. This places the unit into programming mode on powering up.



### Step 4 – Connect AshGrafix Unit to Computer

Connect the USB cable between the AshGrafix unit and the laptop/PC.

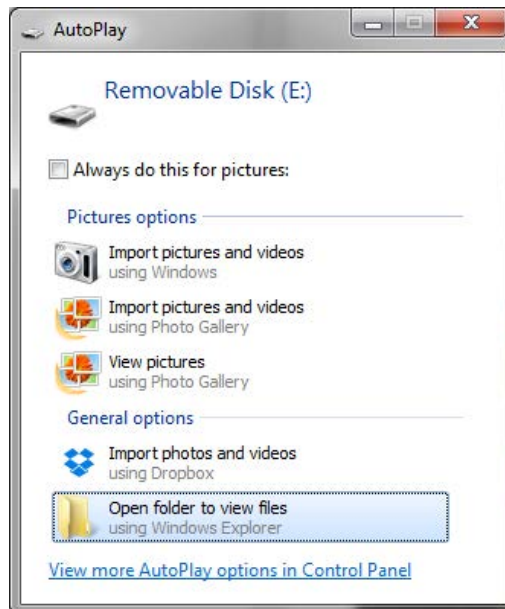


## Step 5 – Link to Flash Memory on AshGraffix Unit

Turn the AshGraffix unit on using the power switch on the other side panel.

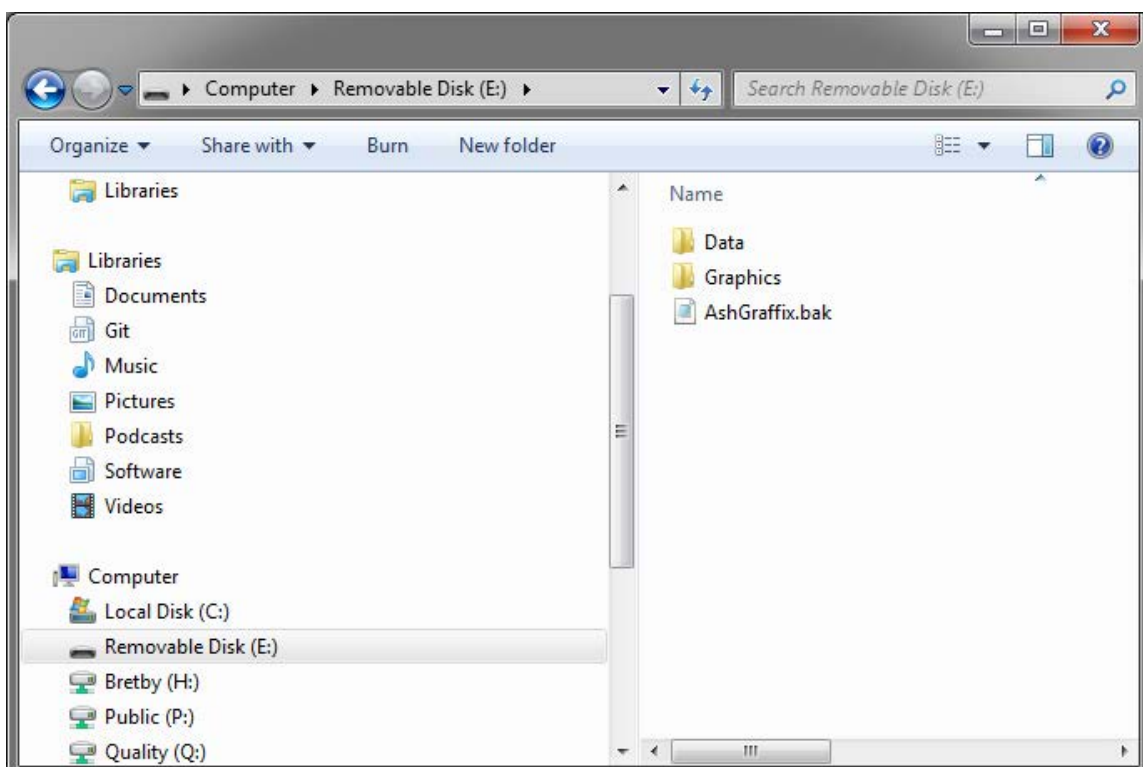
*Please note, the AshGraffix screen will not be operating as the unit is in programming mode.*

On the computer, a window should appear indicating that a **Removable Disk** drive has been connected:



If this window appears, select **Open folder to view files**.

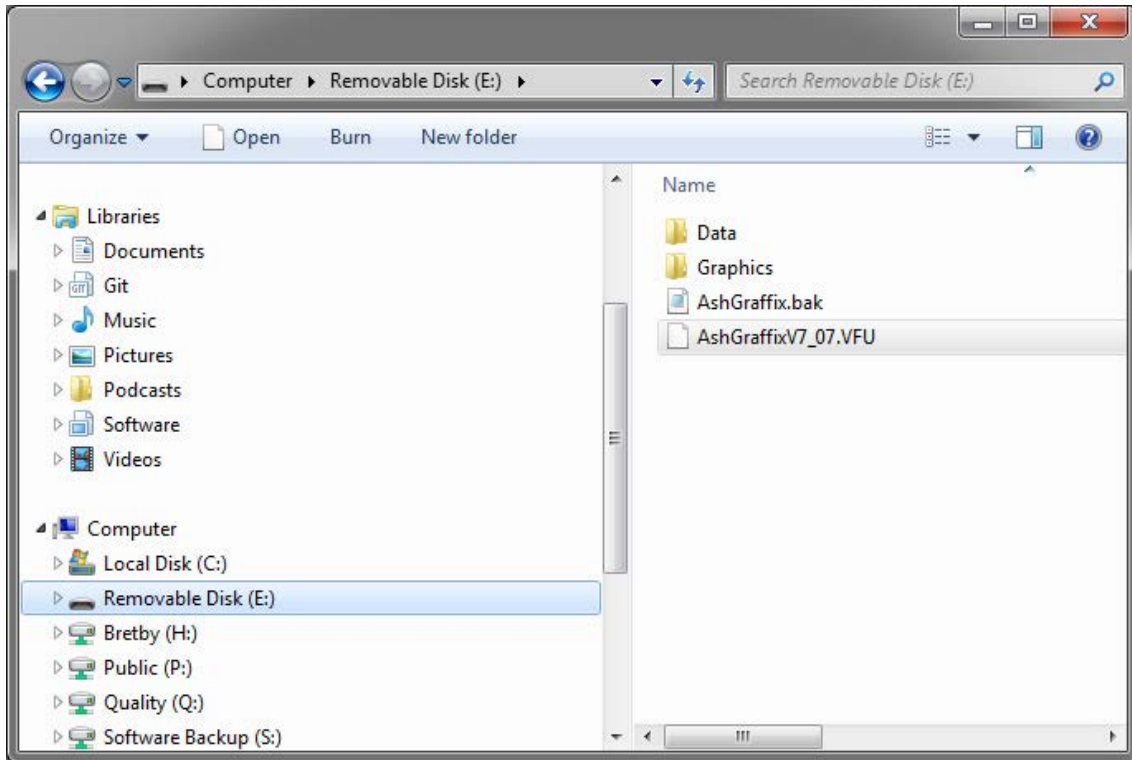
If the above window, or similar does not appear, then use Windows Explorer or a suitable File Manager application to view the contents of the memory on the AshGraffix unit.



If connected to the device correctly, two folders should be visible on the AshGraffix *Removable Disk* driver. These are **Data** and **Graphics**. Some other files may also be present, especially if any data or backup files have been saved to internal memory from within the AshGraffix application

### Step 6 – Copy the Software Installation Image to the AshGraffix Unit

Using Windows Explorer or a suitable File Manager application, copy the software file supplied (*AshGraffixVx\_xx.vfu*) onto the Removable Disk of the AshGraffix unit.



### Step 7 – Install the Software

To install the software, turn off the power to the AshGraffix unit and then turn the power back on. This will cause the AshGraffix processor to detect the installation file and install the software from within it.

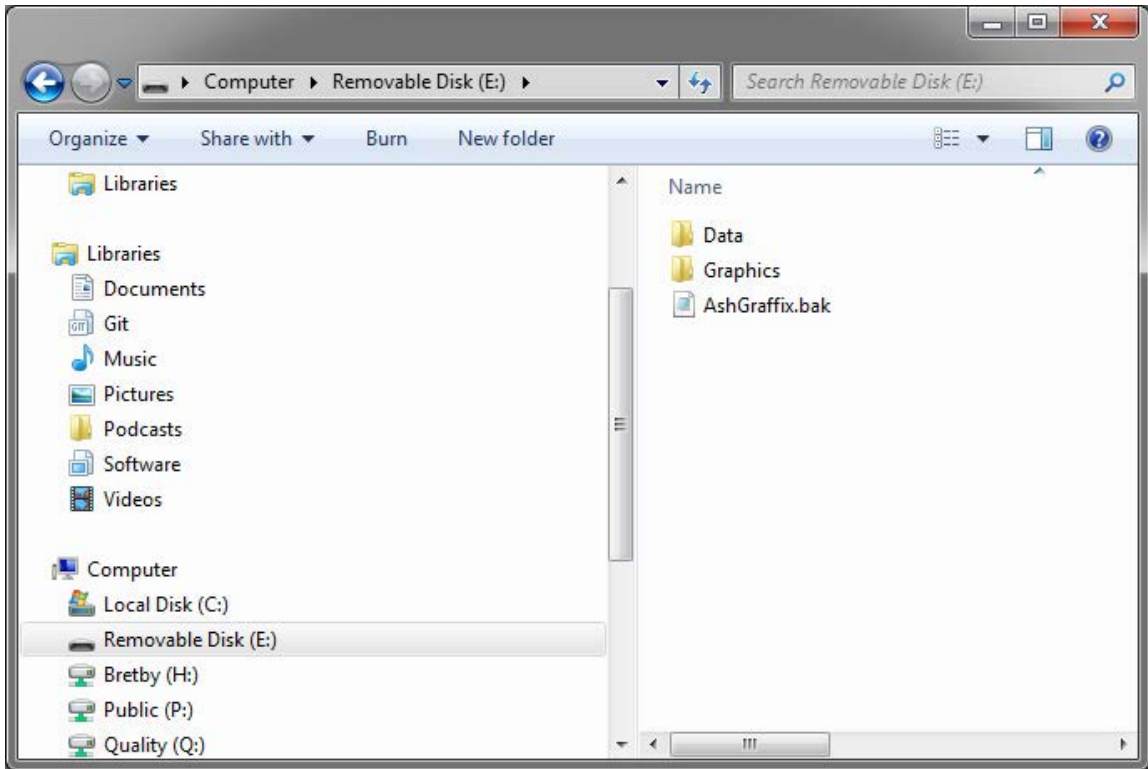
The cable should be left connected to the computer during the process as this is how the user can see that the operation has been successful.

When the power is turned off, the *Removable Disk* will be removed from Windows Explorer (or other application) window. It will NOT be displayed when the power is turned back on at first.

**The installation may take several minutes. There is no indication from the unit that anything is happening during this time. DO NOT TURN OFF THE POWER.**

When the installation has completed, the AutoPlay window and the *Removable Disk* will reappear as when the unit was first connected and powered on.

The explorer window should show that the software installation file has been removed, indicating that its software has been installed

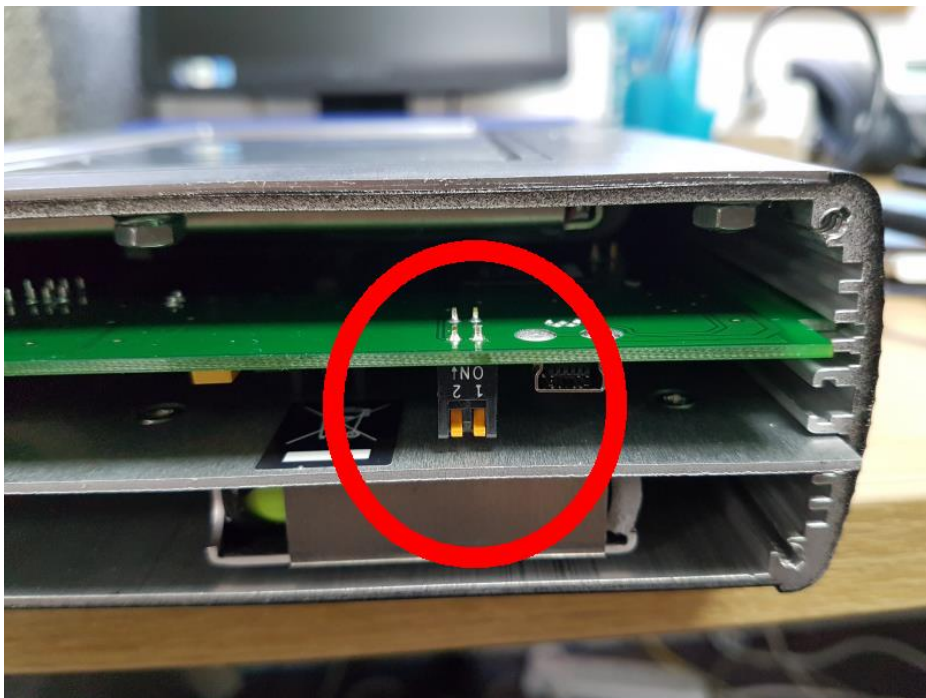


Once this occurs, turn off the power to the AshGraffix unit.

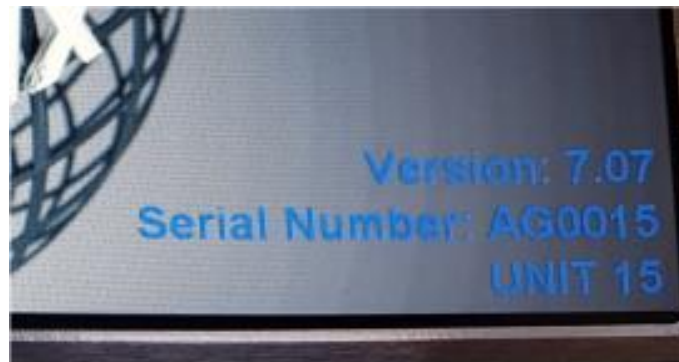
#### Step 8 – Switch the AshGraffix Unit into Run Mode

Disconnect the USB cable from the unit. **Make sure that the circuit boards are held to prevent them being pulled from the body when the cable is pulled on.**

Set the switches as below, which returns the unit into the normal operational *Run* mode.



Power the unit back on and make sure that the usual start-up screen is displayed.



Check that the version number displayed in the bottom right corner matches the version number of the file that was installed.

Power off the unit.

#### Step 9 – Replace Side Panel

With the power to the unit switched off, replace the side panel removed in the first steps.

Ensure that the blue gasket is correctly seated between the panel and main body of the unit.

Please note that the panel will only fit in one orientation. If it does not fit into place easily, try turning it around 180°.

Replace all 4 Torx screws and then place the dust caps into the holes to protect them.

# Parker Worldwide

## Europe, Middle East, Africa

### **AE – United Arab Emirates,** Dubai

Tel: +971 4 8127100  
parker.me@parker.com

### **AT – Austria,** Wiener Neustadt

Tel: +43 (0)2622 23501-0  
parker.austria@parker.com

### **AT – Eastern Europe,** Wiener Neustadt

Tel: +43 (0)2622 23501 900  
parker.easteurope@parker.com

### **AZ – Azerbaijan,** Baku

Tel: +994 50 2233 458  
parker.azerbaijan@parker.com

### **BE/LU – Belgium,** Nivelles

Tel: +32 (0)67 280 900  
parker.belgium@parker.com

### **BG – Bulgaria,** Sofia

Tel: +359 2 980 1344  
parker.bulgaria@parker.com

### **BY – Belarus,** Minsk

Tel: +48 (0)22 573 24 00  
parker.poland@parker.com

### **CH – Switzerland,** Etoy

Tel: +41 (0)21 821 87 00  
parker.switzerland@parker.com

### **CZ – Czech Republic,** Klecany

Tel: +420 284 083 111  
parker.czechrepublic@parker.com

### **DE – Germany,** Kaarst

Tel: +49 (0)2131 4016 0  
parker.germany@parker.com

### **DK – Denmark,** Ballerup

Tel: +45 43 56 04 00  
parker.denmark@parker.com

### **ES – Spain,** Madrid

Tel: +34 902 330 001  
parker.spain@parker.com

### **FI – Finland,** Vantaa

Tel: +358 (0)20 753 2500  
parker.finland@parker.com

### **FR – France,** Contamine s/Arve

Tel: +33 (0)4 50 25 80 25  
parker.france@parker.com

### **GR – Greece,** Athens

Tel: +30 210 933 6450  
parker.greece@parker.com

### **HU – Hungary,** Budaörs

Tel: +36 23 885 470  
parker.hungary@parker.com

### **IE – Ireland,** Dublin

Tel: +353 (0)1 466 6370  
parker.ireland@parker.com

### **IL – Israel**

Tel: +39 02 45 19 21  
parker.israel@parker.com

### **IT – Italy,** Corsico (MI)

Tel: +39 02 45 19 21  
parker.italy@parker.com

### **KZ – Kazakhstan,** Almaty

Tel: +7 7273 561 000  
parker.easteurope@parker.com

### **NL – The Netherlands,** Oldenzaal

Tel: +31 (0)541 585 000  
parker.nl@parker.com

### **NO – Norway,** Asker

Tel: +47 66 75 34 00  
parker.norway@parker.com

### **PL – Poland,** Warsaw

Tel: +48 (0)22 573 24 00  
parker.poland@parker.com

### **PT – Portugal**

Tel: +351 22 999 7360  
parker.portugal@parker.com

### **RO – Romania,** Bucharest

Tel: +40 21 252 1382  
parker.romania@parker.com

### **RU – Russia,** Moscow

Tel: +7 495 645-2156  
parker.russia@parker.com

### **SE – Sweden,** Spånga

Tel: +46 (0)8 59 79 50 00  
parker.sweden@parker.com

### **SK – Slovakia,** Banská Bystrica

Tel: +421 484 162 252  
parker.slovakia@parker.com

### **SL – Slovenia,** Novo Mesto

Tel: +386 7 337 6650  
parker.slovenia@parker.com

### **TR – Turkey,** Istanbul

Tel: +90 216 4997081  
parker.turkey@parker.com

### **UA – Ukraine,** Kiev

Tel: +48 (0)22 573 24 00  
parker.poland@parker.com

### **UK – United Kingdom,** Warwick

Tel: +44 (0)1926 317 878  
parker.uk@parker.com

### **ZA – South Africa,** Kempton Park

Tel: +27 (0)11 961 0700  
parker.southafrica@parker.com

## North America

### **CA – Canada,** Milton, Ontario

Tel: +1 905 693 3000

### **US – USA,** Cleveland

Tel: +1 216 896 3000

## Asia Pacific

### **AU – Australia,** Castle Hill

Tel: +61 (0)2-9634 7777

### **CN – China,** Shanghai

Tel: +86 21 2899 5000

### **HK – Hong Kong**

Tel: +852 2428 8008

### **IN – India,** Mumbai

Tel: +91 22 6513 7081-85

### **JP – Japan,** Tokyo

Tel: +81 (0)3 6408 3901

### **KR – South Korea,** Seoul

Tel: +82 2 559 0400

### **MY – Malaysia,** Shah Alam

Tel: +60 3 7849 0800

### **NZ – New Zealand,** Mt Wellington

Tel: +64 9 574 1744

### **SG – Singapore**

Tel: +65 6887 6300

### **TH – Thailand,** Bangkok

Tel: +662 186 7000

### **TW – Taiwan,** Taipei

Tel: +886 2 2298 8987

## South America

### **AR – Argentina,** Buenos Aires

Tel: +54 3327 44 4129

### **BR – Brazil,** Sao Jose dos Campos

Tel: +55 800 727 5374

### **CL – Chile,** Santiago

Tel: +56 2 623 1216

### **MX – Mexico,** Toluca

Tel: +52 72 2275 4200

