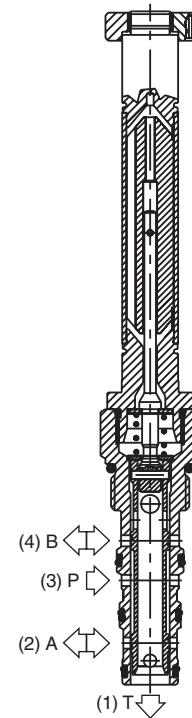
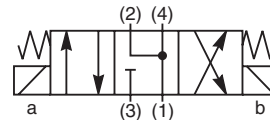
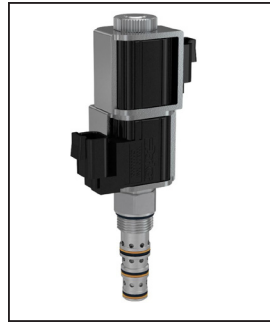


**General Description**

4-Way, 3 Position, Floating Center Spool Valve.  
 For additional information see Technical Tips on pages SV2-SV6.

**Features**

- Four way floating center valve designed to operate double acting cylinders and bi-directional motors, etc.
- One piece cartridge housing ensures internal concentricity
- Coil: Waterproof, hermetically sealed, requires no O'Rings; Symmetrical coil can be reversed without affecting performance.

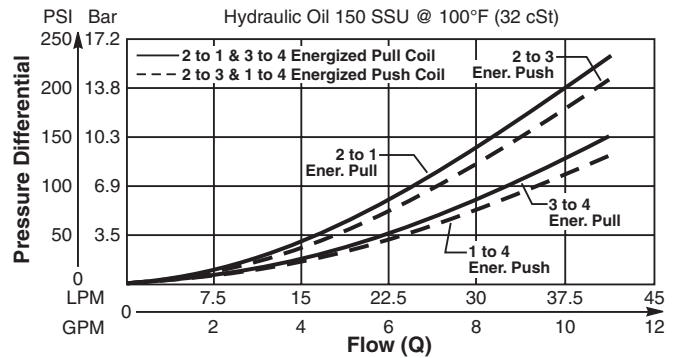


**Specifications**

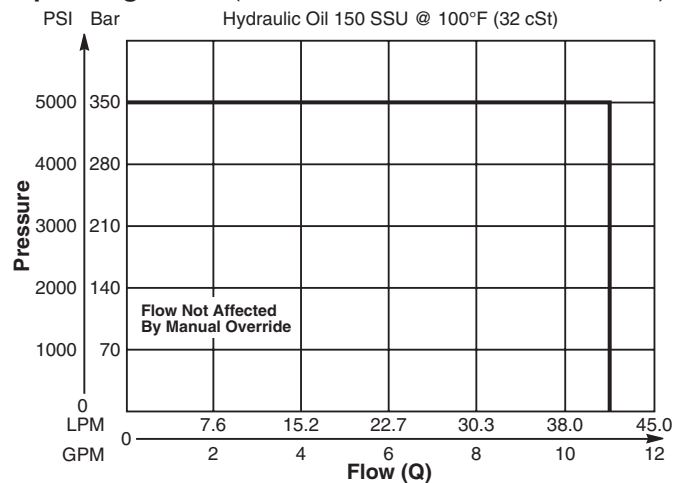
Rated Flow	42 LPM (11 GPM)
Maximum Inlet Pressure	350 Bar (5000 PSI)
Maximum Tank Pressure	210 Bar (3000 PSI)
Leakage at 150 SSU (32 cSt)	160 cc/min @ 210 Bar (3000 PSI)
Minimum Operating Voltage	85% of rated voltage at 20°C (72°F).
Response Time	<b>Open</b> 30-60 ms <b>Close</b> 20-40 ms
Cartridge Material	All parts steel. All operating parts hardened steel.
Operating Temp. Range/Seals	-34°C to +121°C (Nitrile) (-30°F to +250°F) -26°C to +204°C (Fluorocarbon) (-15°F to +400°F)
Fluid Compatibility/Viscosity	Mineral-based or synthetic with lubricating properties at viscosities of 45 to 2000 SSU (6 to 420 cSt)
Filtration	ISO 4406 18/16/13, SAE Class 4
Approx. Weight	.26 kg (.58 lbs.)
Cavity	C10-4 (See BC Section for more details)

**Performance Curves**

**Pressure Drop vs. Flow Energized - GS045450ND**  
 (Through cartridge only)

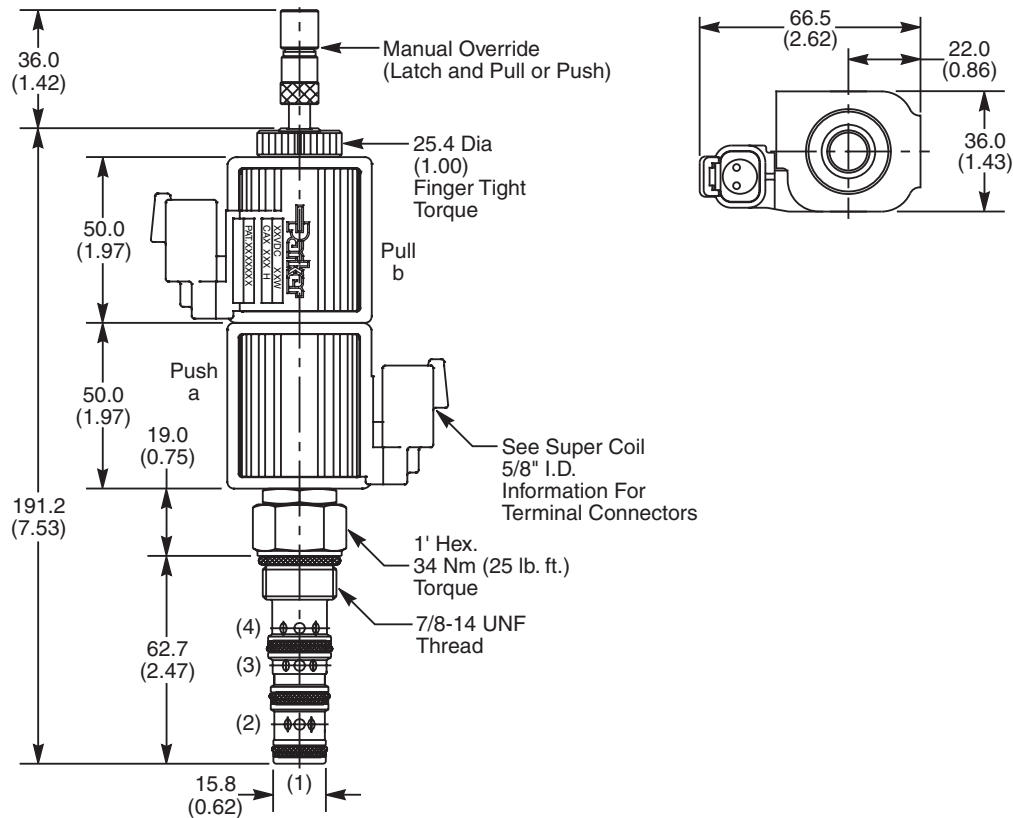


**Operating Limits** (Measured at 75% of Nominal Current)



- CV**  
Check Valves
- SH**  
Shuttle Valves
- LM**  
Load/Motor Controls
- FC**  
Flow Controls
- PC**  
Pressure Controls
- LE**  
Logic Elements
- DC**  
Directional Controls
- SV**  
Solenoid Valves
- PV**  
Proportional Valves
- CE**  
Coils & Electronics
- BC**  
Bodies & Cavities
- TD**  
Technical Data

**Dimensions** Millimeters (Inches)



**Ordering Information**

<b>GS04</b>	<b>54</b>		<b>0</b>	<b>N</b>	<b>D</b>
10 Size Solenoid Valve	Style	Override Option	Screen	Seals	Design Level

**Highlighted** represents preferred options that offer the shortest lead times. Other options may be available, but at extended lead times.

**Coil(s) sold separately.** Please see section CE of this catalog, 5/8" Super-Coil (CA series), for ordering information.

Code	Style
54	High Flow and Pressure ('SP' Coil)

Code	Screen
0	None (Contact factory for OEM requirements)

Code	Override Options
0	None
5	Standard - Center Detent only, Latch Operated, Push and Pull (*40 nt/9 lbs.)

Code	Seals
N	Nitrile

Code	Design Level
D	Industry Common Cavity

\*Force to push at 210 Bar (3000 PSI). Less to Pull.

Kit	Part Number
Nitrile Seal	SK30506N-1
Fluorocarbon Seal	SK30506V-1

Order Bodies Separately  
 See section BC

<b>B10</b>	<b>4</b>	<b>8T</b>
10 size	4-Way Cavity	Port Size

Code	Port Size / Body Material
8T	SAE-8 / Steel (5000 PSI)



**CV**  
Check Valves

**SH**  
Shuttle Valves

**LM**  
Load/Motor Controls

**FC**  
Flow Controls

**PC**  
Pressure Controls

**LE**  
Logic Elements

**DC**  
Directional Controls

**SV**  
Solenoid Valves

**PV**  
Proportional Valves

**CE**  
Coils & Electronics

**BC**  
Bodies & Cavities

**TD**  
Technical Data