

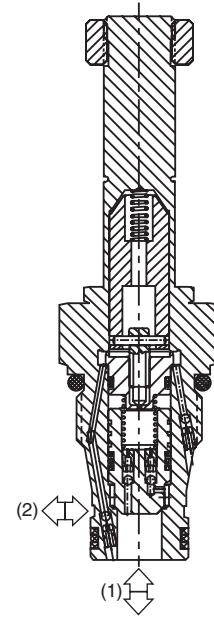
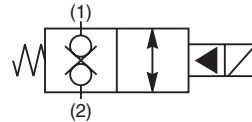
- CV**  
Check Valves
- SH**  
Shuttle Valves
- LM**  
Load/Motor Controls
- FC**  
Flow Controls
- PC**  
Pressure Controls
- LE**  
Logic Elements
- DC**  
Directional Controls
- MV**  
Manual Valves
- SV**  
Solenoid Valves
- PV**  
Proportional Valves
- CE**  
Coils & Electronics
- CB**  
Cartridge Bodies
- BC**  
Bodies & Cavities
- TD**  
Technical Data

### General Description

2-Way, 2 Position, Normally Closed, Bi-Directional Poppet Valve. For additional information see Technical Tips on pages SV1-SV5.

### Features

- Built-in thermal relief set at 36 Bar (500 PSI) above rated pressure
- One piece cartridge housing ensures internal concentricity
- Coil: Waterproof, hermetically sealed, requires no O'Rings; Coil is interchangeable with 02 and 06 series poppet valves; Symmetrical coil can be reversed without affecting performance.

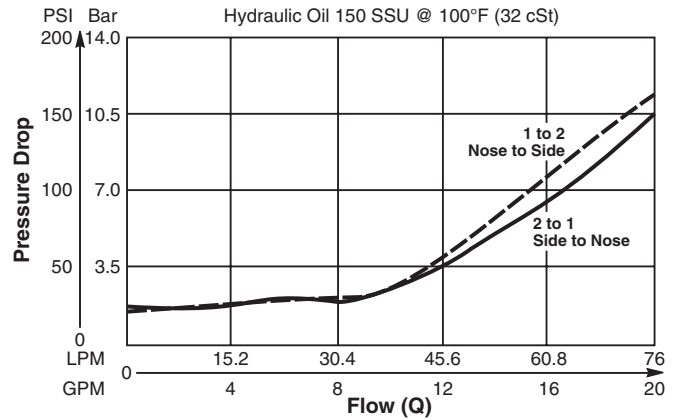


### Specifications

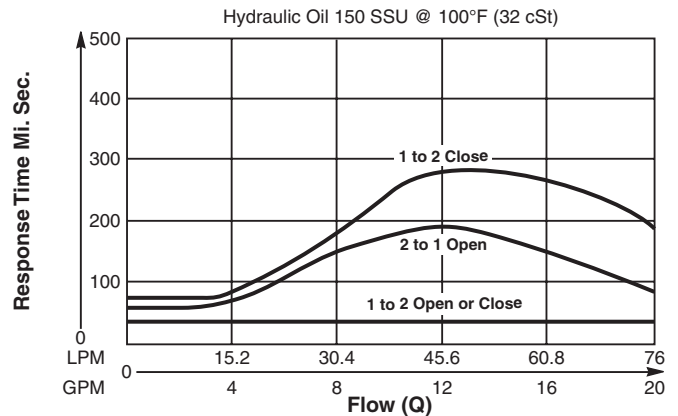
Rated Flow	<b>2 to 1</b> 68 LPM (18 GPM) <b>1 to 2</b> 46 LPM (12 GPM)
Maximum Inlet Pressure	<b>80</b> 210 Bar (3000 PSI) <b>81</b> 350 Bar (5000 PSI)
Leakage at 150 SSU (32 cSt)	5 drops/min. (.33 cc/min.)
Minimum Operating Voltage	85% of rated voltage at 20°C (72°F).
Response Time	See Performance Curves
Cartridge Material	All parts steel. All operating parts hardened steel.
Operating Temp. Range/Seals	-34°C to +121°C (Nitrile) (-30°F to +250°F) -26°C to +204°C (Fluorocarbon) (-15°F to +400°F)
Fluid Compatibility/Viscosity	Mineral-based or synthetic with lubricating properties at viscosities of 45 to 2000 SSU (6 to 420 cSt)
Filtration	ISO 4406 18/16/13, SAE Class 4
Approx. Weight	.17 kg (.37 lbs.)
Cavity	2R (See BC Section for more details)

### Performance Curves

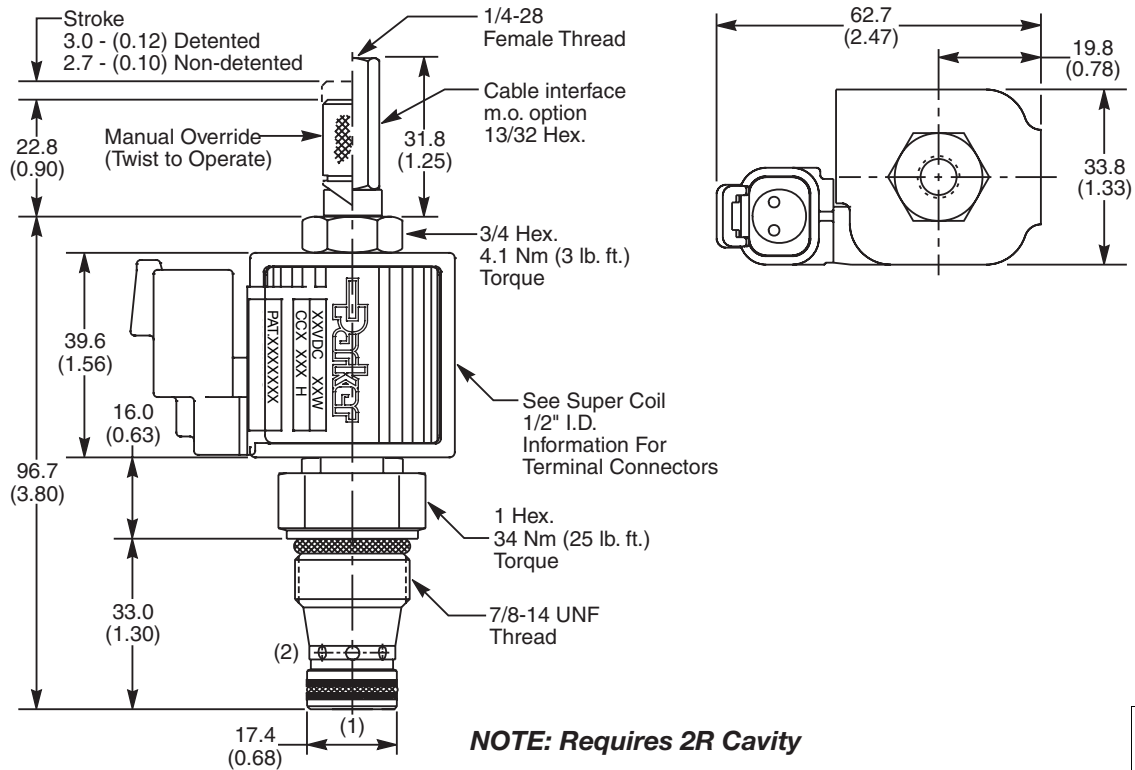
#### Pressure Drop vs. Flow (Through cartridge only)



#### Response Time vs. Flow



**Dimensions** Millimeters (Inches)



**Ordering Information**

<b>GS04</b>			<b>0</b>	<b>N</b>
10 Size Solenoid Valve	Style Normally Closed	Override Option	Screen	Seals

**Highlighted** represents preferred options that offer the shortest lead times. Other options may be available, but at extended lead times.

**Coil(s) sold separately.** Please see section CE of this catalog, 1/2" Super-Coil (CC series), for ordering information.

Code	Style
80	Standard ('SS' Coil)
81	High Pressure ('SP' Coil)

Code	Screen
0	None

Code	Override Options
0	None
1	Detented
2	Non-Detented
3	Cable Interface 210 Bar (3000 PSI)

Code	Seals / Kit No.
N	Nitrile / Buna-N (Std.) (SK30113N-1)

Order Bodies Separately See section BC

<b>BW14</b>	-	<b>2</b>	-	
14 size		2-Way Cavity		Port Size

Code	Port Size / Body Material
8T	SAE-8 / Steel (5000 PSI)
A8T	SAE-8 / Aluminium (3000 PSI)

- CV Check Valves
- SH Shuttle Valves
- LM Load/Motor Controls
- FC Flow Controls
- PC Pressure Controls
- LE Logic Elements
- DC Directional Controls
- MV Manual Valves
- SV Solenoid Valves
- PV Proportional Valves
- CE Coils & Electronics
- CB Cartridge Bodies
- BC Bodies & Cavities
- TD Technical Data