

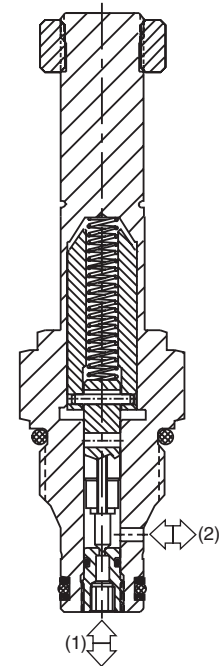
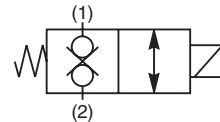
<b>CV</b>	Check Valves
<b>SH</b>	Shuttle Valves
<b>LM</b>	Load/Motor Controls
<b>FC</b>	Flow Controls
<b>PC</b>	Pressure Controls
<b>LE</b>	Logic Elements
<b>DC</b>	Directional Controls
<b>MV</b>	Manual Valves
<b>SV</b>	Solenoid Valves
<b>PV</b>	Proportional Valves
<b>CE</b>	Coils & Electronics
<b>CB</b>	Cartridge Bodies
<b>BC</b>	Bodies & Cavities
<b>TD</b>	Technical Data

### General Description

2-Way, 2 Position, Normally Closed Poppet Valve. Bi-Directional Direct Acting. For additional information see Technical Tips on pages SV1-SV5.

### Features

- Fast Response
- One piece cartridge housing ensures internal concentricity
- Coil: Waterproof, hermetically sealed, requires no O’Rings; Coil is interchangeable with 04 and 06 series poppet valves; Symmetrical coil can be reversed without affecting performance.

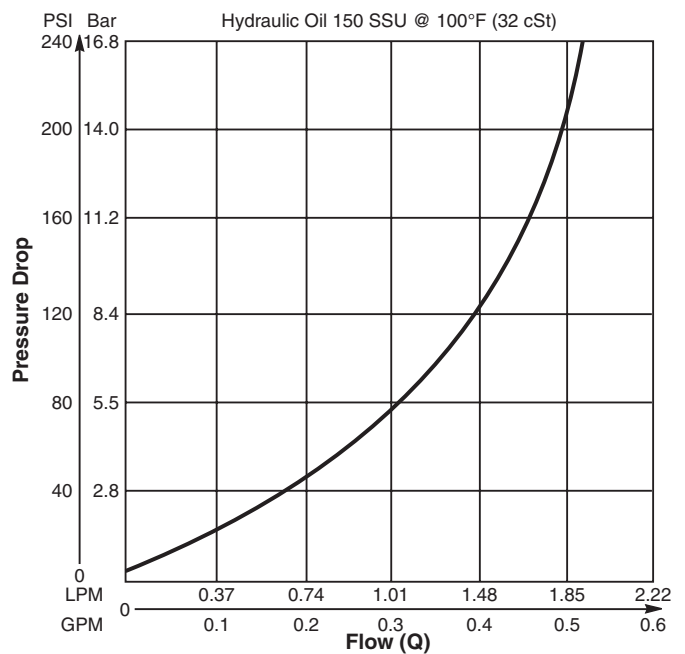


### Specifications

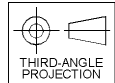
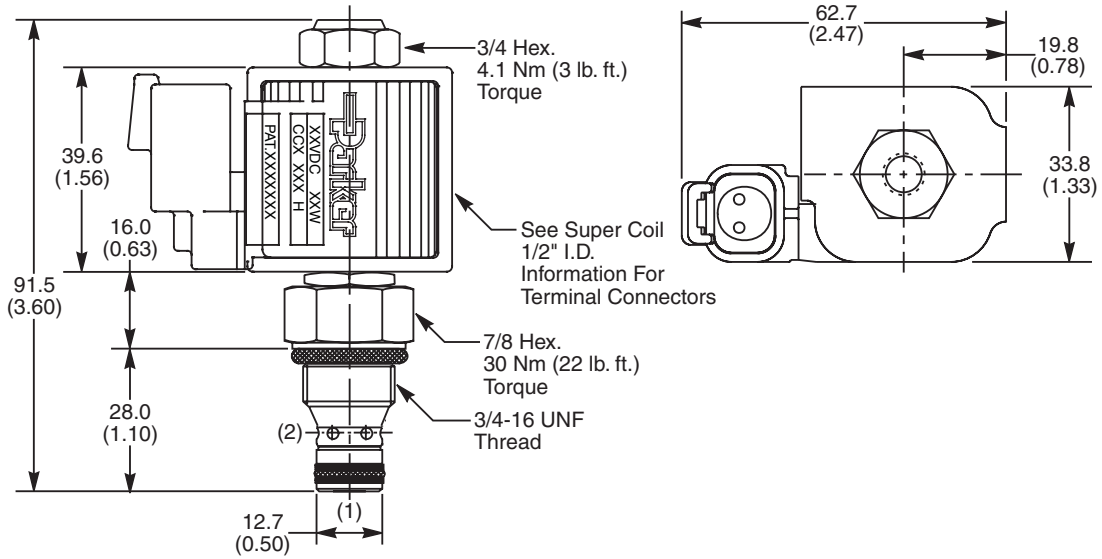
Rated Flow	1.7 LPM (0.45 GPM)
Maximum Inlet Pressure	210 Bar (3000 PSI)
Leakage at 150 SSU (32 cSt)	<b>72</b> 5 drops/min. (.33 cc/min.) <b>73</b> Zero Drops Soft (Delrin®) Seat
Minimum Operating Voltage	85% of rated voltage at 20°C (72°F).
Response Time	<b>Open</b> 10 ms <b>Close</b> 10 ms
Cartridge Material	All parts steel. All operating parts hardened steel.
Operating Temp. Range/Seals	-34°C to +121°C (Nitrile) (-30°F to +250°F) -26°C to +204°C (Fluorocarbon) (-15°F to +400°F)
Fluid Compatibility/Viscosity	Mineral-based or synthetic with lubricating properties at viscosities of 45 to 2000 SSU (6 to 420 cSt)
Filtration	ISO 4406 18/16/13, SAE Class 4
Approx. Weight	.14 kg (.31 lbs.)
Cavity	C08-2 (See BC Section for more details)

### Performance Curve

**Pressure Drop vs. Flow (Through cartridge only)**



**Dimensions** Millimeters (Inches)



**Ordering Information**

<b>GS02</b>		<b>0</b>		
08 Size Solenoid Valve	Style Normally Closed	Override Option	Screen	Seals

**Highlighted** represents preferred options that offer the shortest lead times. Other options may be available, but at extended lead times.

**Coil(s) sold separately.** Please see section CE of this catalog, 1/2" Super-Coil (CC series), for ordering information.

Code	Style
72	Standard ('SP' Coil)
73	Zero Drops ('SP' Coil)

Code	Screen
0	None
1	60 Mesh Screen

Code	Override Options
0	None

Code	Seals / Kit No.
N	Nitrile / Buna-N (Std.) (SK30088N-1)
V	Fluorocarbon / (SK30088V-1)

Order Bodies Separately  
 See section BC

<b>B08</b>	-	<b>2</b>	-	
08 size		2-Way Cavity		Port Size

Code	Port Size / Body Material
6T	SAE-6 / Steel (5000 PSI)
A6T	SAE-6 / Aluminium (3000 PSI)

- CV Check Valves
- SH Shuttle Valves
- LM Load/Motor Controls
- FC Flow Controls
- PC Pressure Controls
- LE Logic Elements
- DC Directional Controls
- MV Manual Valves
- SV Solenoid Valves
- PV Proportional Valves
- CE Coils & Electronics
- CB Cartrak Bodies
- BC Bodies & Cavities
- TD Technical Data