

**General Description**

3-Way Spool Valves. For additional information see Technical Tips on pages SV1-SV5.

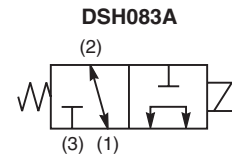


**Features**

- High flow capacity with reduced space requirements
- Standard valve bodies and common cavities
- One piece encapsulated coils with minimal amperage draw
- Manual overrides, seal variations and other options available
- No dynamic seals
- Variety of coil terminations
- Polyurethane "D"-Ring eliminates need for backup rings
- Nylon inserted jam-nut provides secure holding in high vibration applications
- All external parts zinc plated

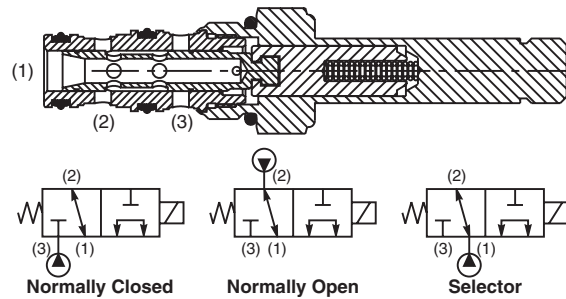
**Specifications**

Rated Flow	<b>DSH083A</b>	N.O.	11.3 LPM (3.0 GPM)
		N.C.	7.5 LPM (2.0 GPM)
		Selector	7.5 LPM (2.0 GPM)
	<b>DSH083B</b>	N.C.	15.0 LPM (4.0 GPM)
		Selector	15.0 LPM (4.0 GPM)
	<b>DSH083C</b>	N.O.	15.0 LPM (4.0 GPM)
Maximum Inlet Pressure	<b>DSH083N</b>	N.O.	11.3 LPM (3.0 GPM)
		Selector	15.0 LPM (4.0 GPM)
Leakage at 150 SSU (32 cSt)	160 cc/min. (10 in <sup>3</sup> /min.) at 350 Bar (5000 PSI) DSH083B - 250 cc/min. (15 in <sup>3</sup> /min.) DSH083N - 250 cc/min. (15 in <sup>3</sup> /min.)		
Minimum Operating Voltage	85% of rated voltage at 20°C (72°F).		
Response Time	50 ms		
Cartridge Material	All parts steel. All operating parts hardened steel.		
Operating Temp. Range/Seals	-37°C to +93°C ("D"-Ring) (-45°F to +200°F) -34°C to +121°C (Nitrile) (-30°F to +250°F) -26°C to +204°C (Fluorocarbon) (-15°F to +400°F)		
Fluid Compatibility/Viscosity	Mineral-based or synthetic with lubricating properties at viscosities of 45 to 2000 SSU (6 to 420 cSt)		
Filtration	ISO 4406 18/16/13, SAE Class 4		
Approx. Weight	.13 kg (.28 lbs.)		
Cavity	C08-3 (See BC Section for more details)		
Form Tool	Rougher	NFT08-3R	
	Finisher	NFT08-3F	

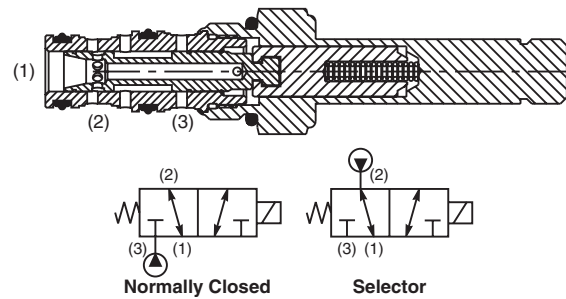


**Construction/Symbols**

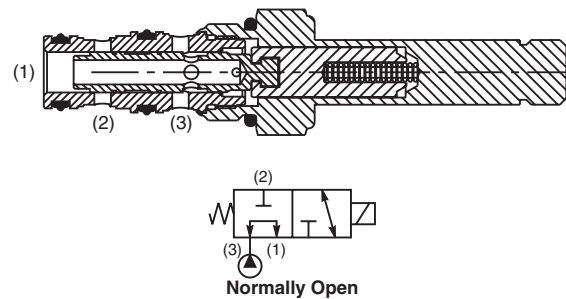
**DSH083A**



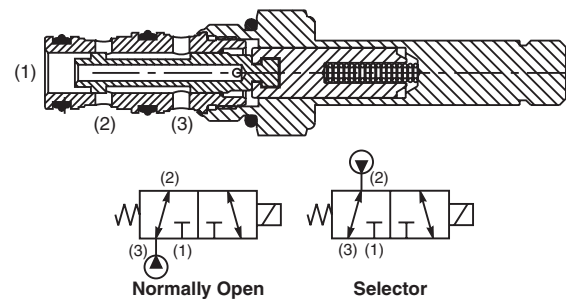
**DSH083B**



**DSH083C**

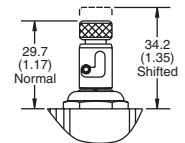
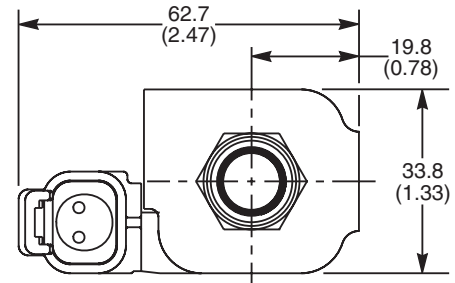
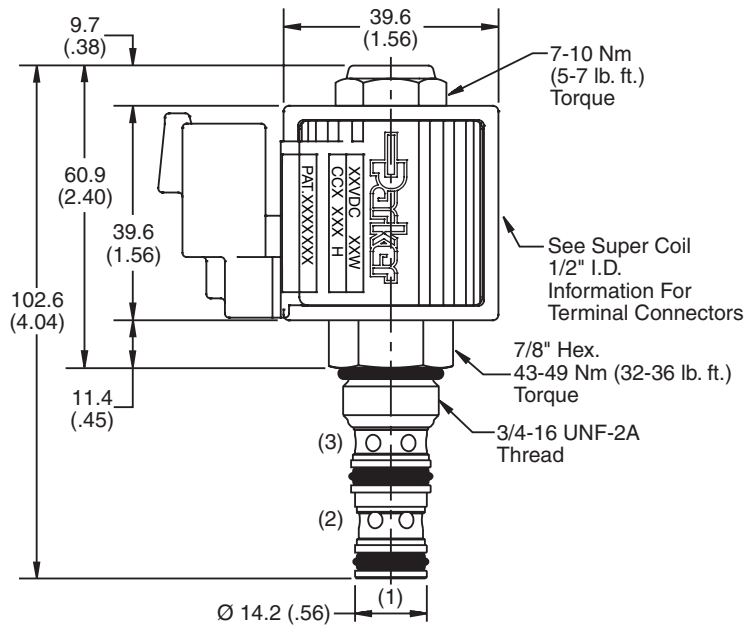


**DSH083N**

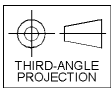


CV
Check Valves
SH
Shuttle Valves
LM
Load/Motor Controls
FC
Flow Controls
PC
Pressure Controls
LE
Logic Elements
DC
Directional Controls
MV
Manual Valves
SV
Solenoid Valves
PV
Proportional Valves
CE
Coils & Electronics
CB
Cartrpак Bodies
BC
Bodies & Cavities
TD
Technical Data

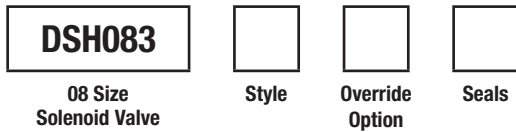
**Dimensions** Millimeters (Inches)



Push and Twist M.O.



**Ordering Information**



**Highlighted** represents preferred options that offer the shortest lead times. Other options may be available, but at extended lead times.

**Coil(s) sold separately.** Please see section CE of this catalog, 1/2" Super-Coil (CC series), for ordering information.

Order Bodies Separately  
 See section BC



Code	Style
A	
B	
C	
N	

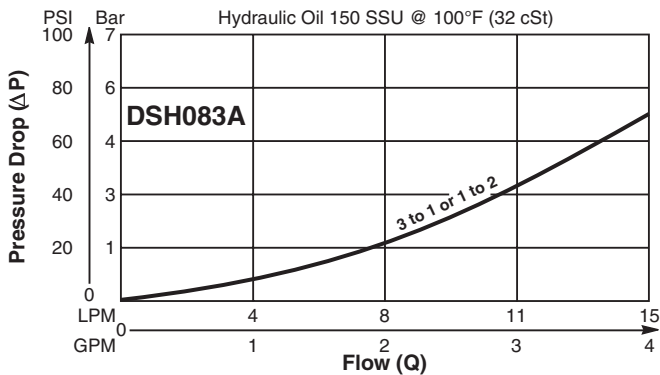
Code	Override Options
Omit	None
T	Push and Twist* (N.C. & N.O.)

\*Requires Super Coil.

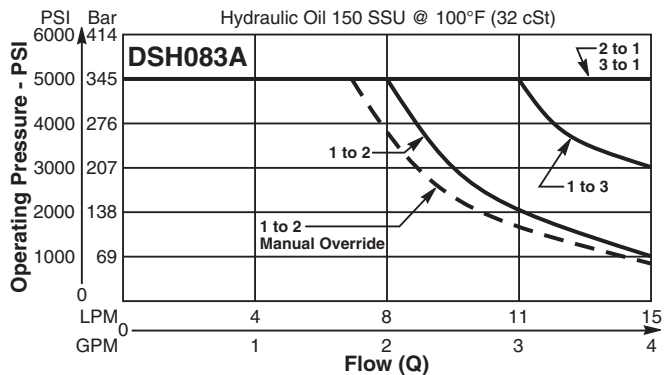
Code	Seals / Kit No.
Omit	"D"-Ring / (SK08-3)
N	Nitrile (SK08-3)
V	Fluorocarbon / (SK08-3V)

Code	Port Size / Body Material
6T	SAE-6 / Steel (5000 PSI)
A6T	SAE-6 / Aluminium (3000 PSI)

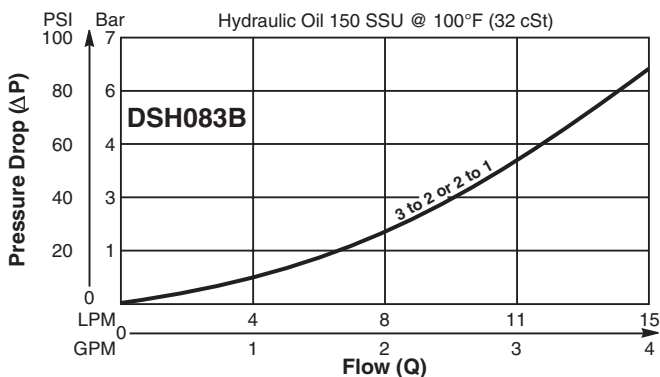
**Pressure Drop vs. Flow (Through cartridge only)**



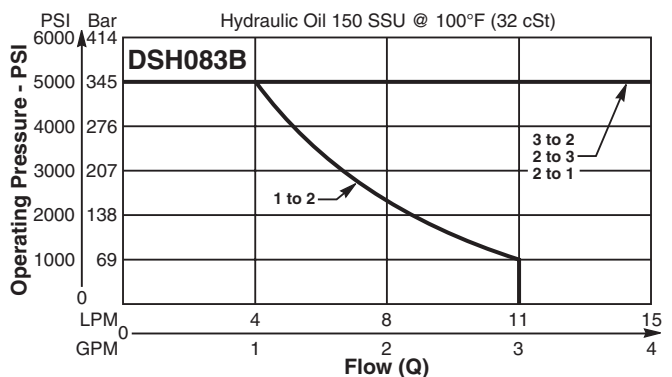
**Shift Limit Characteristics (Min. Operating Voltage)**



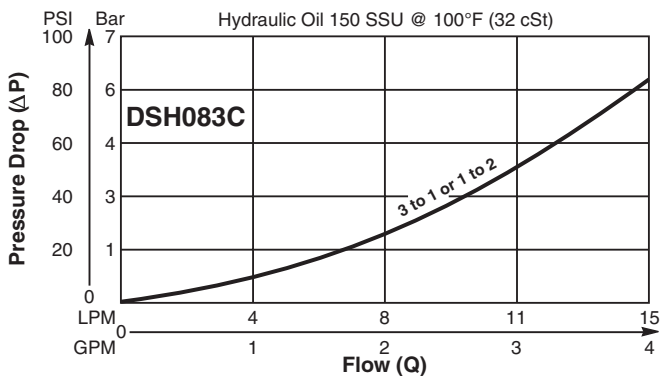
**Pressure Drop vs. Flow (Through cartridge only)**



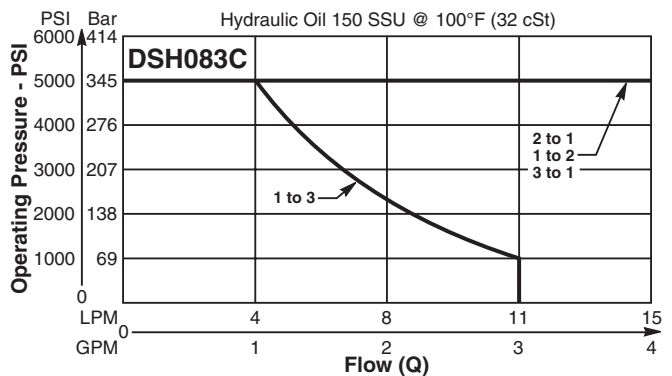
**Shift Limit Characteristics (Min. Operating Voltage)**



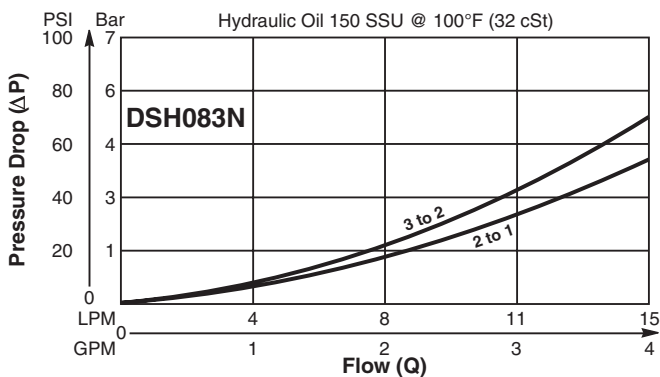
**Pressure Drop vs. Flow (Through cartridge only)**



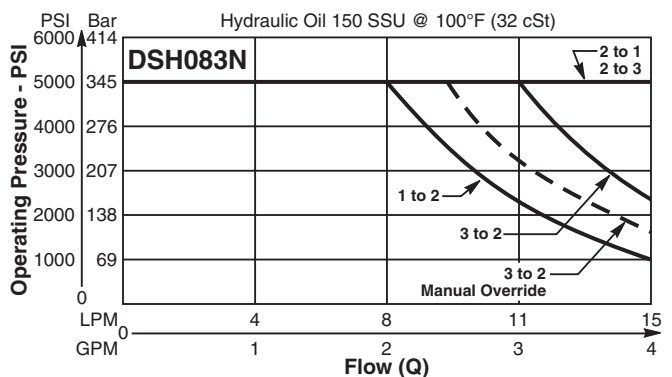
**Shift Limit Characteristics (Min. Operating Voltage)**



**Pressure Drop vs. Flow (Through cartridge only)**



**Shift Limit Characteristics (Min. Operating Voltage)**



- CV
- Check Valves
- SH
- Shuttle Valves
- LM
- Load/Motor Controls
- FC
- Flow Controls
- PC
- Pressure Controls
- LE
- Logic Elements
- DC
- Directional Controls
- MV
- Manual Valves
- SV
- Solenoid Valves
- PV
- Proportional Valves
- CE
- Coils & Electronics
- CB
- Cartrp Bodies
- BC
- Bodies & Cavities
- TD
- Technical Data