

<b>CV</b>	Check Valves
<b>SH</b>	Shuttle Valves
<b>LM</b>	Load/Motor Controls
<b>FC</b>	Flow Controls
<b>PC</b>	Pressure Controls
<b>LE</b>	Logic Elements
<b>DC</b>	Directional Controls
<b>MV</b>	Manual Valves
<b>SV</b>	Solenoid Valves
<b>PV</b>	Proportional Valves
<b>CE</b>	Coils & Electronics
<b>CB</b>	Cartridge Bodies
<b>BC</b>	Bodies & Cavities
<b>TD</b>	Technical Data

### General Description

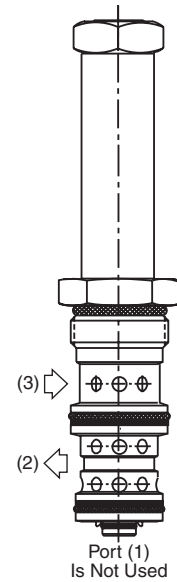
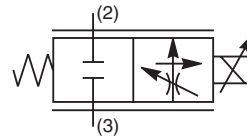
2 Way, Normally Closed, Proportional Flow Regulator Valve. Pressure Compensated.  
 For additional information see Technical Tips on pages PV1-PV5.

### Features

- One piece cartridge housing ensures internal concentricity
- Coil: Waterproof, hermetically sealed, requires no O’Rings; Symmetrical coil can be reversed without affecting performance.
- Nonmagnetic spool and housing assembly
- Factory-adjusted low variation option (Model “L”) is available for applications where low variation of flow from valve to valve is essential at a given current.

### Specifications

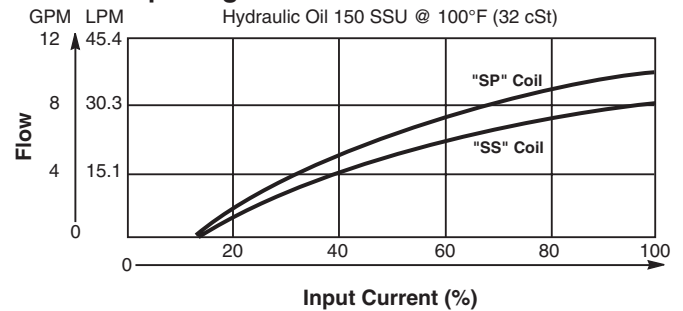
Rated Flow	<b>21</b> 30 LPM (8 GPM) Standard ('SS' Coil) <b>21</b> 36 LPM (9.5 GPM) High Flow ('SP' Coil)
Maximum Input Pressure at Port 2	210 Bar (3000 PSI)
Minimum Pressure Differential	<b>21</b> 13.8 Bar (200 PSI) Standard <b>21</b> 20.7 Bar (300 PSI) High Flow
Maximum Internal Leakage	780 cc (46 cu. in.) @ 210 Bar (3000 PSI)
Hysteresis @ 100 Hz PWM	7%
Cracking Pressure	25% of Input Signal
<b>Variation of Flow @ 35% of Rated Current</b>	<b>Standard Model</b> Up To ±20% Of Rated Flow <b>Model "L"</b> ±7% Of Rated Flow
Cartridge Material	All parts steel. All operating parts hardened steel.
Operating Temp. Range/Seals	-34°C to +121°C (Nitrile) (-30°F to +250°F) -26°C to +204°C (Fluorocarbon) (-15°F to +400°F)
Fluid Compatibility/Viscosity	Mineral-based or synthetic with lubricating properties at viscosities of 45 to 2000 SSU (6 to 420 cSt)
Filtration	ISO-4406 18/16/13, SAE Class 4
Approx. Weight	0.13 kg (0.28 lbs.)
Cavity	3X (See BC Section for more details)



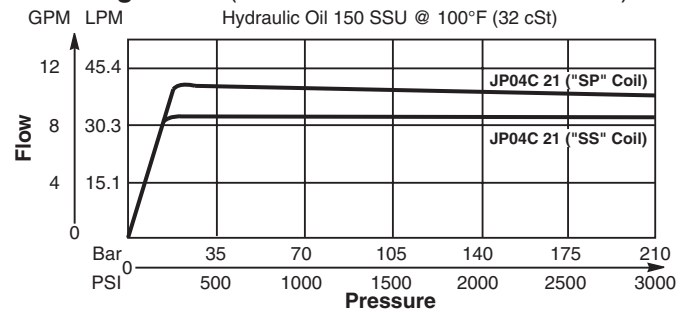
### Performance Curves

▲ PWM Current Regulator Recommended

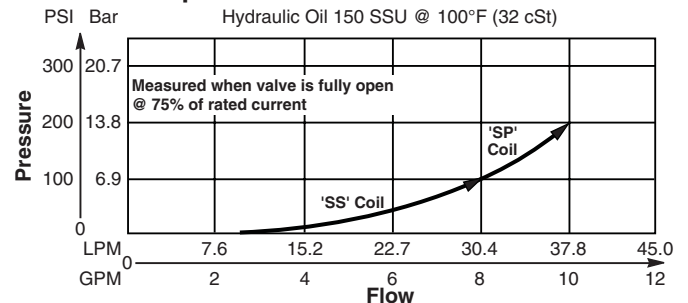
#### Flow vs. Input Signal



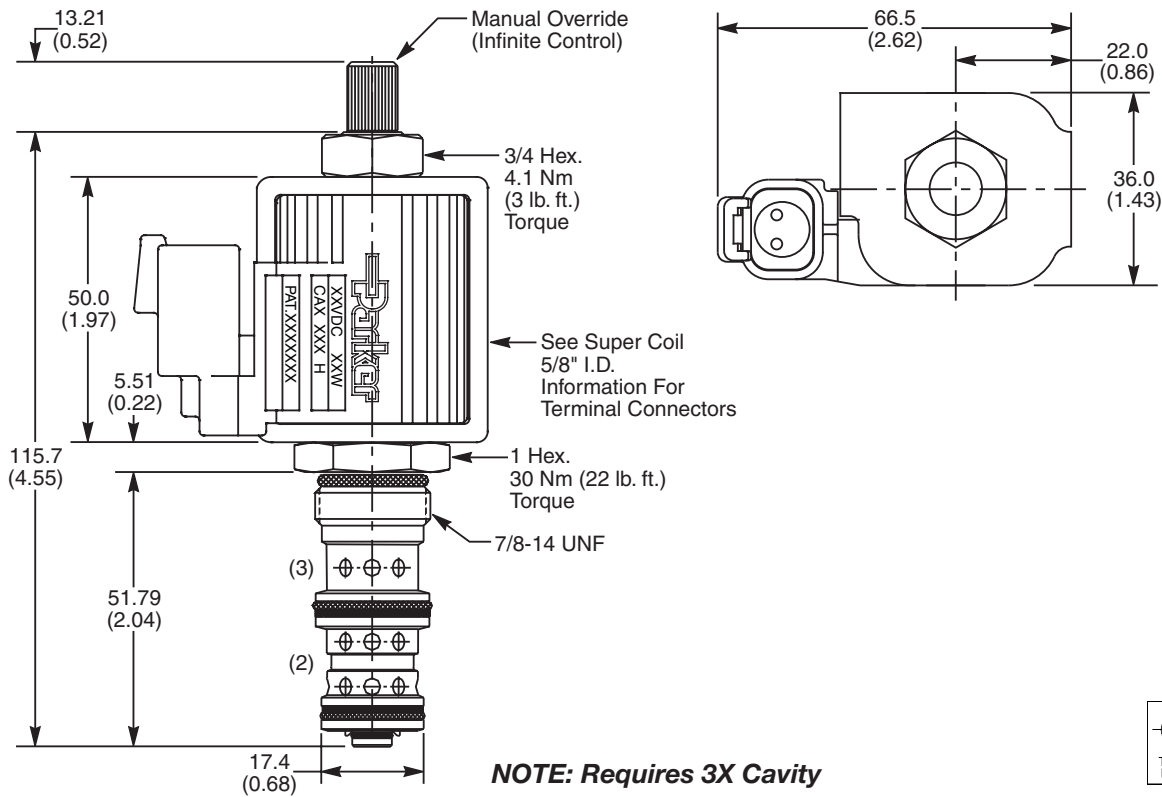
#### Flow Regulation (Measured 75% of Rated Current)



#### Pressure Drop vs. Flow



**Dimensions** Millimeters (Inches)



**NOTE: Requires 3X Cavity**

**Ordering Information**

<b>JP04C</b>	<b>21</b>				
10 Size Proportional Valve	Style	Override Option	Filter Screen	Seals	Flow Variation

**Highlighted** represents preferred options that offer the shortest lead times. Other options may be available, but at extended lead times.

**Coil(s) sold separately.** Please see section CE of this catalog, 5/8" Super-Coil (CA series), for ordering information.

Code	Style (Maximum Regulated Flow)
21	Standard ('SS' Coil) 30 LPM (8 GPM)
21	High Flow ('SP' Coil) 36 LPM (9.5 GPM)

Code	Seals / Kit No.
<b>N</b>	<b>Nitrile / Buna-N (SK30106N-1)</b>
V	Fluorocarbon / (SK30106V-1)

Code	Override Option
0	Not Required
5	Infinite Control M.O.

Code	Flow Variation
Omit	Standard up to ±20% of Rated Flow
L	Low Variation (±7% of Rated Flow)

Code	Filter Screen
0	Not Available
1	60 Mesh Screen on Port 2

Order Bodies Separately  
 See section BC

<b>LB10</b>		
Line Body	Porting	Body Material

Code	Porting
553	1/2" SAE

Code	Body Material
S	Steel (5000 PSI)
A	Aluminium (3000 PSI)



CV
Check Valves
SH
Shuttle Valves
LM
Load/Motor Controls
FC
Flow Controls
PC
Pressure Controls
LE
Logic Elements
DC
Directional Controls
MV
Manual Valves
SV
Solenoid Valves
PV
Proportional Valves
CE
Coils & Electronics
CB
Cartrpak Bodies
BC
Bodies & Cavities
TD
Technical Data