

- CV**
Check Valves
- SH**
Shuttle Valves
- LM**
Load/Motor Controls
- FC**
Flow Controls
- PC**
Pressure Controls
- LE**
Logic Elements
- DC**
Directional Controls
- MV**
Manual Valves
- SV**
Solenoid Valves
- PV**
Proportional Valves
- CE**
Coils & Electronics
- CB**
Cartridge Bodies
- BC**
Bodies & Cavities
- TD**
Technical Data

General Description

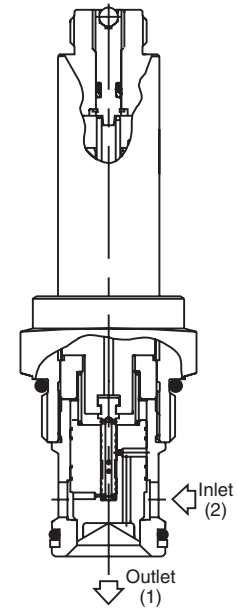
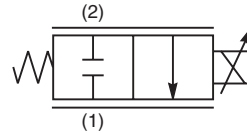
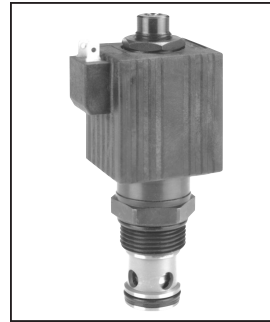
Normally Closed Proportional Needle Valve. This valve is designed specifically for bleed off or unloading circuits. Back pressure will affect performance. For additional information see Technical Tips on pages PV1-PV5.

Features

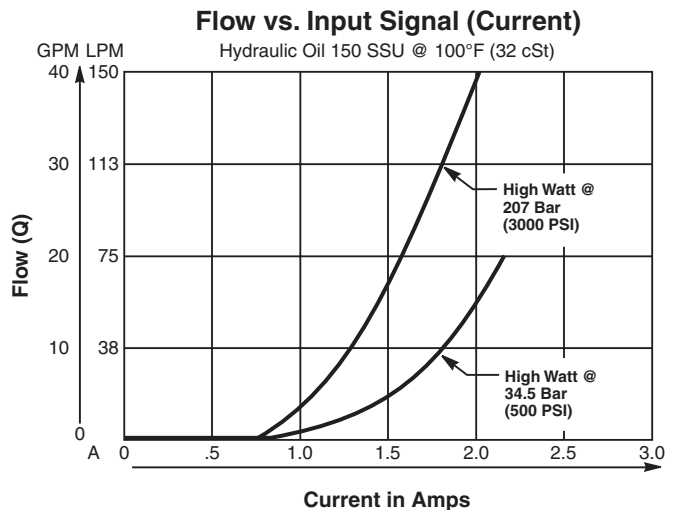
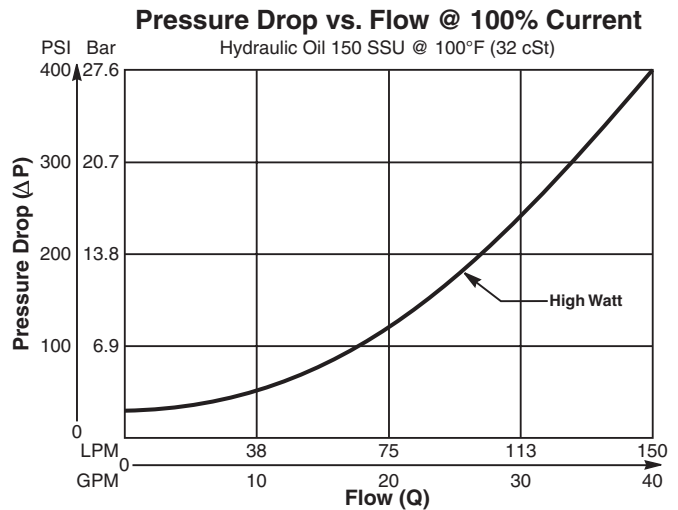
- On-off type solenoids
- Low hysteresis
- PWM signal preferred
- All external parts zinc plated

Specifications

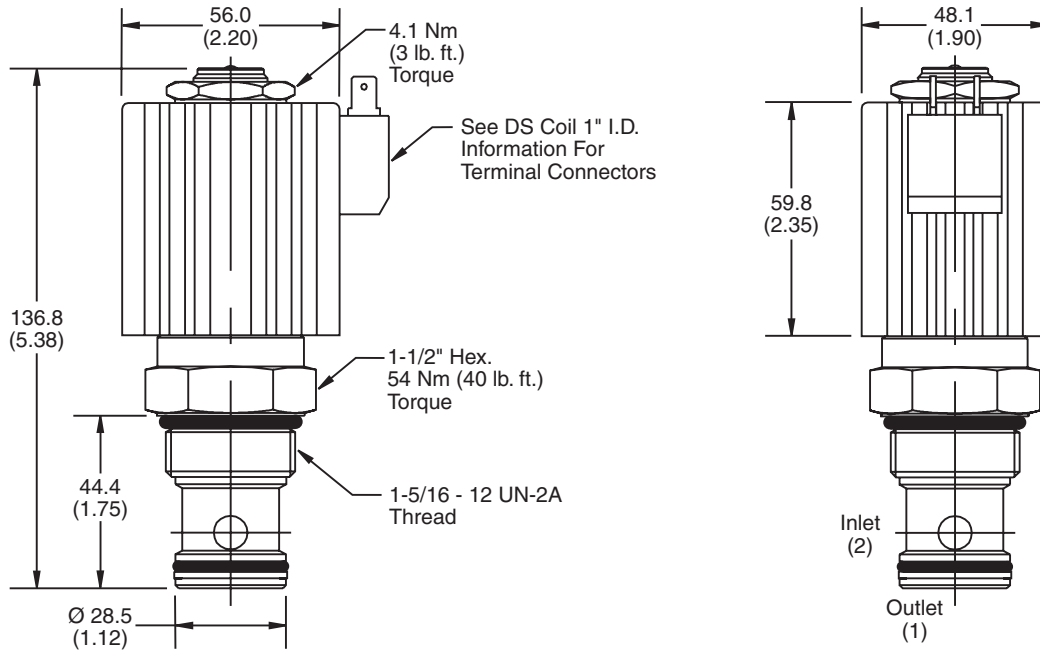
Rated Flow Valve Fully Open	High Watt Coil 150 LPM (40 GPM)	
Maximum Inlet Pressure	210 Bar (3000 PSI)	
Leakage at 150 SSU (32 cSt)	125 cc/min. (7.6 in ³ /min.)	
Hysteresis @ 200 Hz PWM	4%	
Cracking (Dead band)	20% - 30% of Input Signal	
Frequency	100 - 400 Hz (200 Hz Preferred)	
Maximum Control Current	12 VDC	24 VDC
	High Watt 3.53A	1.79A
Cartridge Material	All parts steel. All operating parts hardened steel.	
Operating Temp. Range/Seals	-34°C to +121°C (Nitrile) (-30°F to +250°F) -26°C to +204°C (Fluorocarbon) (-15°F to +400°F)	
Fluid Compatibility/Viscosity	Mineral-based or synthetic with lubricating properties at viscosities of 45 to 2000 SSU (6 to 420 cSt)	
Filtration	ISO-4406 18/16/13, SAE Class 4	
Approx. Weight	0.34 kg (0.75 lbs.)	
Cavity	C16-2 (See BC Section for more details)	
Form Tool	Rougher	None
	Finisher	NFT16-2F



Performance Curves



Dimensions Millimeters (Inches)



Ordering Information

DF161C40



Seals

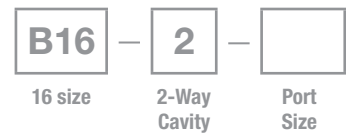
16 Size Normally Closed Proportional Flow Control Valve

Highlighted represents preferred options that offer the shortest lead times. Other options may be available, but at extended lead times.

Coil(s) sold separately. Please see section CE of this catalog, 1" Coil (DS series), for ordering information.

Code	Seals / Kit No.
Omit	Nitrile / Buna-N (SK16-2)
V	Fluorocarbon / (SK16-2V)

Order Bodies Separately
 See section BC



Code	Porting / Body Material
16T	SAE-16 / Steel (5000 PSI)
A16T	SAE-16 / Aluminium (3000 PSI)

- CV
- Check Valves
- SH
- Shuttle Valves
- LM
- Load/Motor Controls
- FC
- Flow Controls
- PC
- Pressure Controls
- LE
- Logic Elements
- DC
- Directional Controls
- MV
- Manual Valves
- SV
- Solenoid Valves
- PV
- Proportional Valves
- CE
- Coils & Electronics
- CB
- Cartrpak Bodies
- BC
- Bodies & Cavities
- TD
- Technical Data