

**General Description**

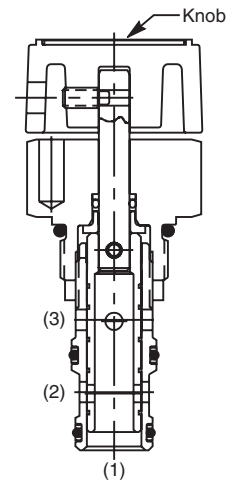
3-Way Rotary Spool Valve. The DM103 Series Valves are suited for any 3-way application (such as a selector function) where manual operation is desired. For additional information see Technical Tips pages MV1-MV2.

**Features**

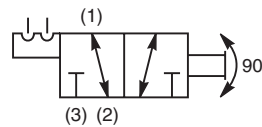
- Several lever and knob options available
- Detented versions available
- Serviceable cartridge design
- All external parts zinc plated

**Operation**

The K, LD, and FKD options require a full 90° rotation to shift the spool from one offset position to the other. The LN and FKN options require a full 45° rotation from center to either offset position. The knob (or lever) position indicator can be positioned anywhere within the 360° circle.



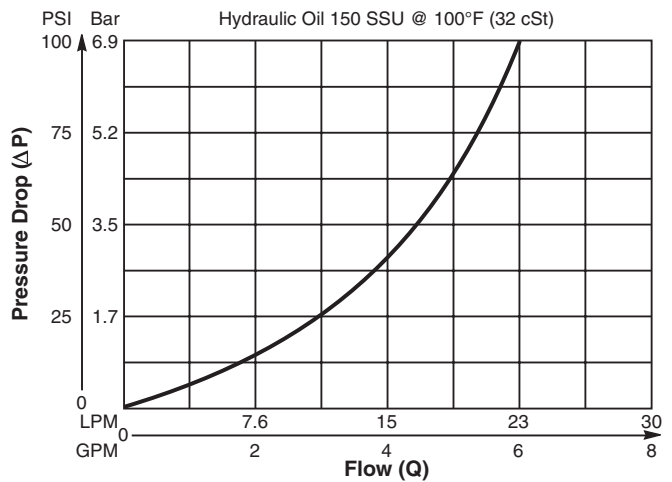
DM103LD



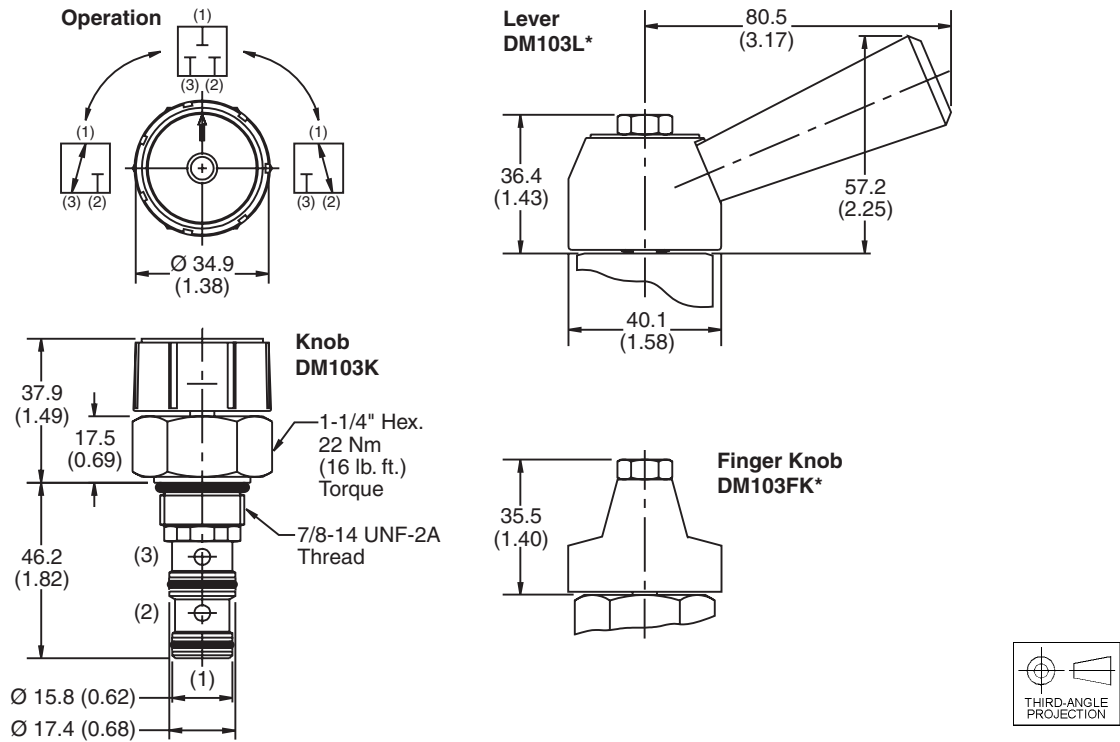
**Specifications**

<b>Nominal Flow</b>	22.5 LPM (6 GPM)
<b>Maximum Inlet Pressure</b>	240 Bar (3500 PSI)
<b>Degrees of Rotation</b>	K, LD, and FKD Styles: 90° from Offset to Offset (2 positions) LN, FKN Style: 45° from center to either Offset (3 positions)
<b>Leakage at 150 SSU (32 cSt)</b>	164 cc/min. at 240 Bar (3500 PSI)
<b>Cartridge Material</b>	Stem, stainless steel. All other parts hardened steel.
<b>Operating Temp. Range/Seals</b>	-34°C to +121°C (Nitrile) (-30°F to +250°F) -26°C to +204°C (Fluorocarbon) (-15°F to +400°F)
<b>Fluid Compatibility/Viscosity</b>	Mineral-based or synthetic with lubricating properties at viscosities of 45 to 2000 SSU (6 to 420 cSt)
<b>Filtration</b>	ISO-4406 18/16/13, SAE Class 4
<b>Approx. Weight</b>	0.11 kg (.30 lbs.)
<b>Cavity</b>	C10-3 (See BC Section for more details)
<b>Form Tool</b>	Rougher NFT10-3R Finisher NFT10-3F

**Performance Curve**  
**Flow vs. Pressure Drop**  
 (Through cartridge only)



**Dimensions** Millimeters (Inches)



**Ordering Information**

**DM103**  
 10 Size Rotary Spool Valve

Actuator Type      Seals

Code / Actuator Type	
<b>K</b> Knob	
<b>LD</b> Lever with 2 position detent	
<b>LN</b> Lever with 3 position detent	
<b>FKD</b> Finger Knob with 2 position detent	
<b>FKN</b> Finger Knob with 3 position detent	

Code	Seals / Kit No.
Omit	Nitrile / (SK10-3)
V	Fluorocarbon / (SK10-3V)

Knob / Lever Kits
Knob Kit - 718126
Lever Kit - 718129

Order Bodies Separately  
 See section BC

**B10** - **3** -   
 10 size      3-Way Cavity      Port Size

Code	Porting / Body Material
8T	SAE-8 / Steel (5000 PSI)
A8T	SAE-8 / Aluminium (3000 PSI)

CV
Check Valves
SH
Shuttle Valves
LM
Load/Motor Controls
FC
Flow Controls
PC
Pressure Controls
LE
Logic Elements
DC
Directional Controls
MV
Manual Valves
SV
Solenoid Valves
PV
Proportional Valves
CE
Coils & Electronics
CB
Cartrpak Bodies
BC
Bodies & Cavities
TD
Technical Data