

**Technical Information**

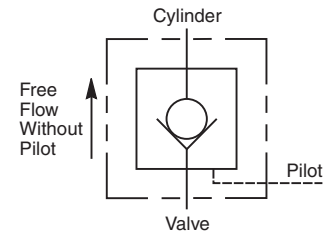
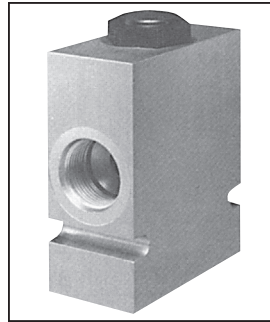
- CV** Check Valves
- SH** Shuttle Valves
- LM** Load/Motor Controls
- FC** Flow Controls
- PC** Pressure Controls
- LE** Logic Elements
- DC** Directional Controls
- MV** Manual Valves
- SV** Solenoid Valves
- PV** Proportional Valves
- CE** Coils & Electronics
- BC** Bodies & Cavities
- TD** Technical Data

**General Description**

Pilot Piston Style Pilot Operated Check Valve. For additional information see Technical Tips on pages CV1-CV4.

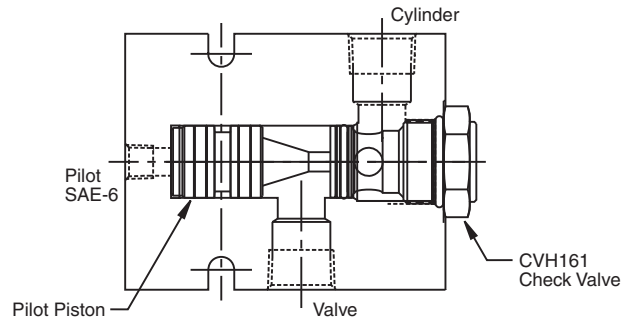
**Features**

- Hardened precision ground parts for durability
- Optional sealed pilot piston
- Steel or aluminum body construction



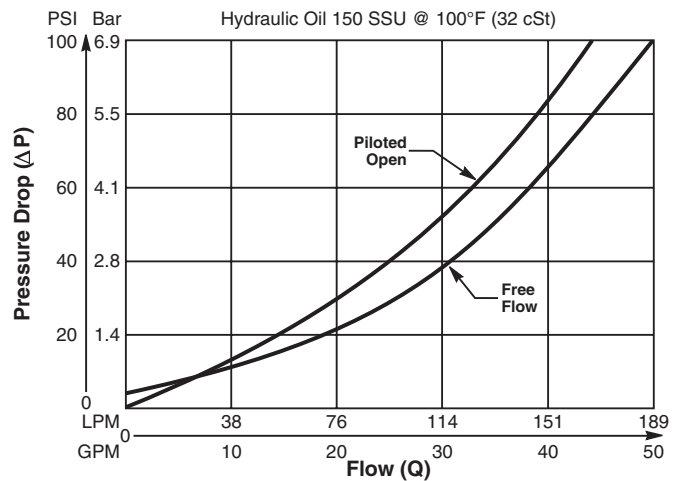
**Specifications**

<b>Maximum Flow</b>	187 LPM (50 GPM)
<b>Maximum Inlet Pressure</b>	210 Bar (3000 PSI) - CSP161 350 Bar (5000 PSI) - CSPH161
<b>Leakage at 150 SSU (32 cSt)</b>	5 drops/min (.33 cc/min) @ 350 Bar (5000 psi)
<b>Leakage Across Pilot Piston (No Seals)</b>	312 cc/min 0.3 LPM (.08 GPM)
<b>Pilot Ratio</b>	3:1
<b>Pilot Piston Part Numbers</b>	No Seal - 717910 Nitrile Seal - 717910N Fluorocarbon - 717910V
<b>Cartridge Material</b>	All parts steel. All operating parts hardened steel.
<b>Body Material</b>	Aluminum - CSP161 Steel - CSPH161
<b>Operating Temp. Range (Ambient)</b>	-34°C to +121°C (Nitrile) (-30°F to +250°F) -26°C to +204°C (Fluorocarbon) (-15°F to +400°F)
<b>Filtration</b>	ISO-4406 18/16/13, SAE Class 4
<b>Fluids</b>	Mineral-based or synthetic with lubricating properties at viscosities of 45 to 2000 SSU (6 to 420 cSt)
<b>Approx. Weight</b>	

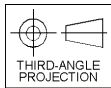
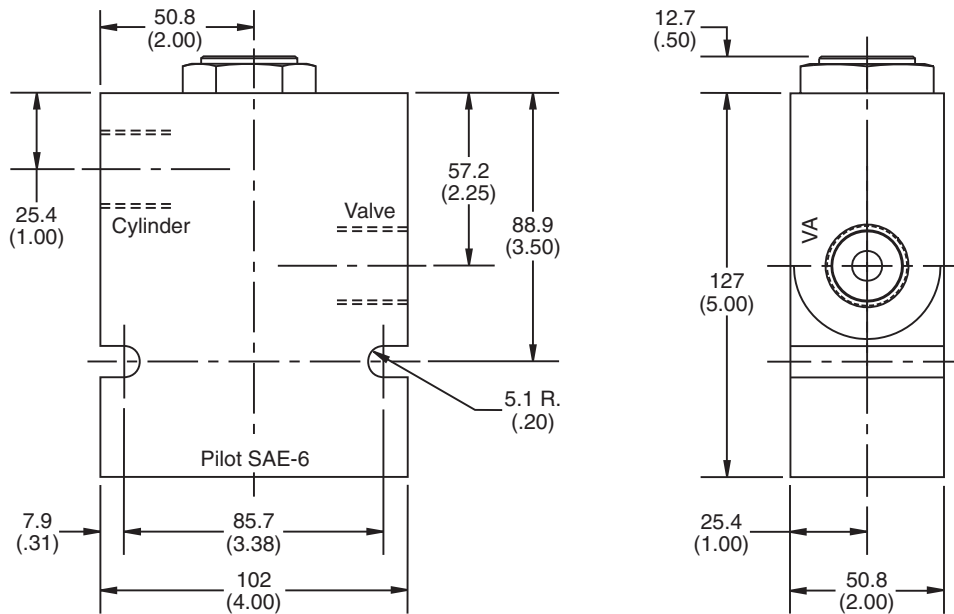


**Performance Curve**

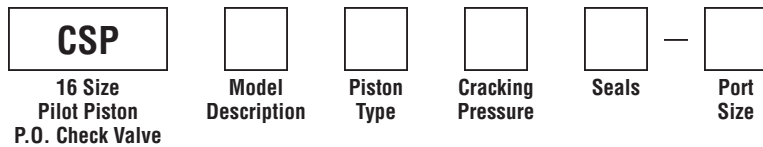
Pressure Drop vs. Flow (Through cartridge only)



**Dimensions** Millimeters (Inches)



**Ordering Information**



Code	Model Description
161	3000 PSI Series
H161	5000 PSI Series

Code	Cracking Pressure
*Omit	0.3 Bar (5 PSI)
20	1.4 Bar (20 PSI)
65	4.5 Bar (65 PSI)
175	12.1 Bar (175 PSI)

Code	Seals / Kit No.
Omit	Nitrile / (SK16-2N)
V	Fluorocarbon / (SK16-2V)

Code	Port Size	Material
A16T	SAE-16	Aluminum (CSP161 Only)
16T	SAE-16	Steel (CSPH161 Only)

Code	Piston Type
P	Pilot Piston without seal
A	Pilot Piston with seal Note: Requires 1.4 Bar (20 PSI) crack minimum.

\*Not available with "A" option.

- CV**  
Check Valves
- SH**  
Shuttle Valves
- LM**  
Load/Motor Controls
- FC**  
Flow Controls
- PC**  
Pressure Controls
- LE**  
Logic Elements
- DC**  
Directional Controls
- MV**  
Manual Valves
- SV**  
Solenoid Valves
- PV**  
Proportional Valves
- CE**  
Coils & Electronics
- BC**  
Bodies & Cavities
- TD**  
Technical Data