

### General Description

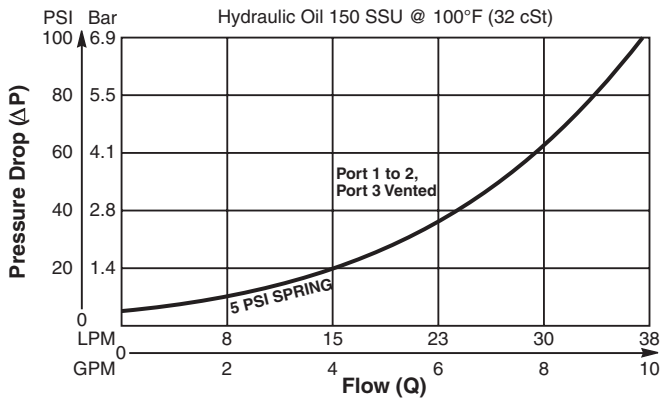
Pilot to Close Check Valve. For additional information see Technical Tips on pages CV1-CV4.

### Features

- Hardened, precision ground parts for durability
- Fully guided poppet for smooth operation
- All external parts zinc plated

### Performance Curve

**Pressure Drop vs. Flow (Through cartridge only)**

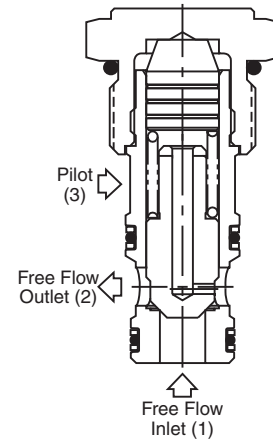
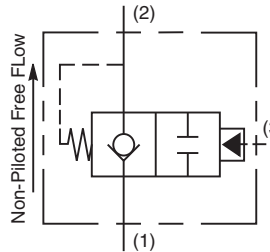
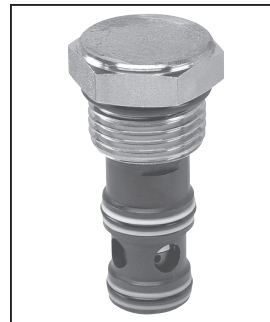
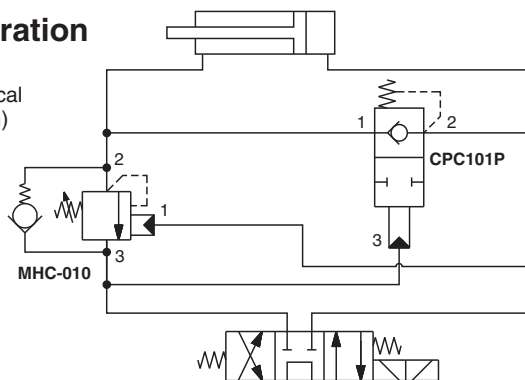


### Specifications

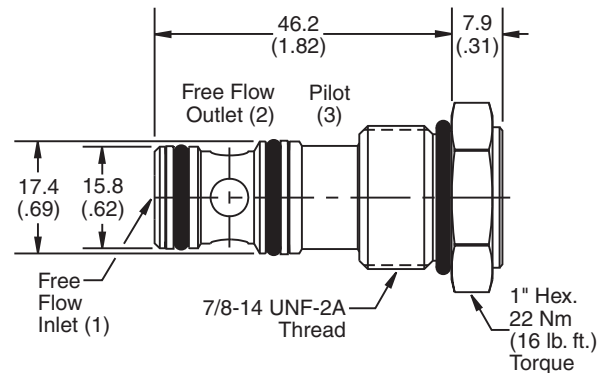
|                                    |   |
|------------------------------------|---|
| <b>Rated Flow</b>                  | 38 LPM (10 GPM)   |
| <b>Maximum Inlet Pressure</b>      | 240 Bar (3500 PSI)  |
| <b>Leakage at 150 SSU (32 cSt)</b> | 15 drops/min. (.99 cc/min.) at 240 Bar (3500 PSI)   |
| <b>Pilot Ratio</b>                 | 2:1   |
| <b>Operating Temp. Range/Seals</b> | -34°C to +121°C (Nitrile) (-30°F to +250°F)<br>-26°C to +204°C (Fluorocarbon) (-15°F to +400°F) |
| <b>Approx. Weight</b>              | .14 kg (0.31 lbs.)  |
| <b>Cavity</b>                      | C10-3 (See BC Section for more details)   |
| <b>Form Tool</b>                   | Rougher NFT10-3R<br>Finisher NFT10-3F   |

### Regeneration Circuit

(See Technical Tips Section)



### Dimensions



### Ordering Information

|   |                          |              |                      |                  |
|---|--------------------------|--------------|----------------------|------------------|
| <b>CPC101P</b>                            |                          |              |                      |                  |
| <b>10 Size Pilot to Close Check Valve</b> | <b>Cracking Pressure</b> | <b>Seals</b> | <b>Body Material</b> | <b>Port Size</b> |

| Code | Cracking Pressure |
|------|-------------------|
| Omit | 0.3 Bar (5 PSI)   |
| 50   | 3.5 Bar (50 PSI)  |

| Code | Body Material |
|------|---------------|
| Omit | Steel         |
| A    | Aluminum      |

| Code | Seals / Kit No.          |
|------|--------------------------|
| Omit | Nitrile / (SK10-3)       |
| V    | Fluorocarbon / (SK10-3V) |

| Code | Port Size      | Body Part No. |
|------|----------------|---------------|
| Omit | Cartridge Only |               |
| 6T   | SAE-6          | (B10-3-*6T)   |
| 8T   | SAE-8          | (B10-3-*8T)   |

\* Add "A" for aluminum, omit for steel.