

Technical Information

- CV** Check Valves
- SH** Shuttle Valves
- LM** Load/Motor Controls
- FC** Flow Controls
- PC** Pressure Controls
- LE** Logic Elements
- DC** Directional Controls
- MV** Manual Valves
- SV** Solenoid Valves
- PV** Proportional Valves
- CE** Coils & Electronics
- BC** Bodies & Cavities
- TD** Technical Data

General Description

The HLC is a solenoid coil designed for use with cartridge valves for applications in potentially hazardous or explosive environments.

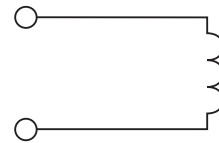
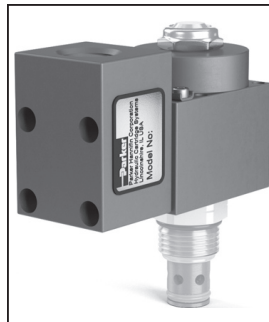
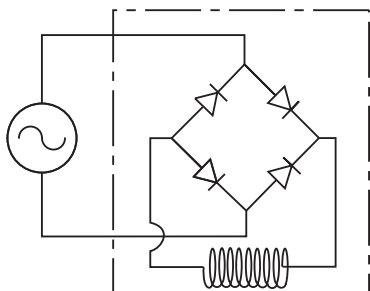
Features

- Fits standard 2 position on/off solenoid products
- Includes terminal block for 1/2" NPT or M20 x 1.5 conduit connections
- Modular design for multiple valve options
- Meets multiple global certifications for regional flexibility
- Corrosion resistant up to 1,000 hour salt spray per ISO9227 and/or ASTM B 117.
- Conduit cover may be rotated to four directions and is removable for ease of installation and service

Specifications

Core Tube	0.630" (16.1mm)
Voltage	12 and 24 VDC and Onboard Rectifier for 120 VAC Circuits
Wattage Range	19 - 30 Watts
Duty Cycle	100% Continuous Duty
Corrosion Resistance	Up to 1,000 Hours Salt Spray
Ambient Temperature	-40°C to +80°C (T4) -40°F to +176°F
Ingress Protection Rating	IP66
Dust Temperature Class	T135
Gas Temperature Class	T4
Weight	0.88 kg (1.95 lbs.)

AC Coil Assembly



Ordering Information

HLC10
 Hazardous Location Coil
 5/8" I.D.
 Wattage Voltage Termination

Code	Wattage
L	Low Watt
H	High Watt

Code	Voltage				
	Volts	Wattage	Voltage (Volts Max.)	Ohms*	Ambient Temp.
D012	12 VDC	Low 21.2	14.3	6.8	-40°C to 70°C -40°F to 158°F
		High 29.6	13.5	4.9	-40°C to 50°C -40°F to 122°F
D024	24 VDC	Low 21.4	28.6	26.9	-40°C to 70°C -40°F to 158°F
		High 29.9	27	19.3	-40°C to 50°C -40°F to 122°F
A120	120 VAC	Low 19.3	140	602	-40°C to 80°C -40°F to 176°F
		High NA	NA	NA	NA

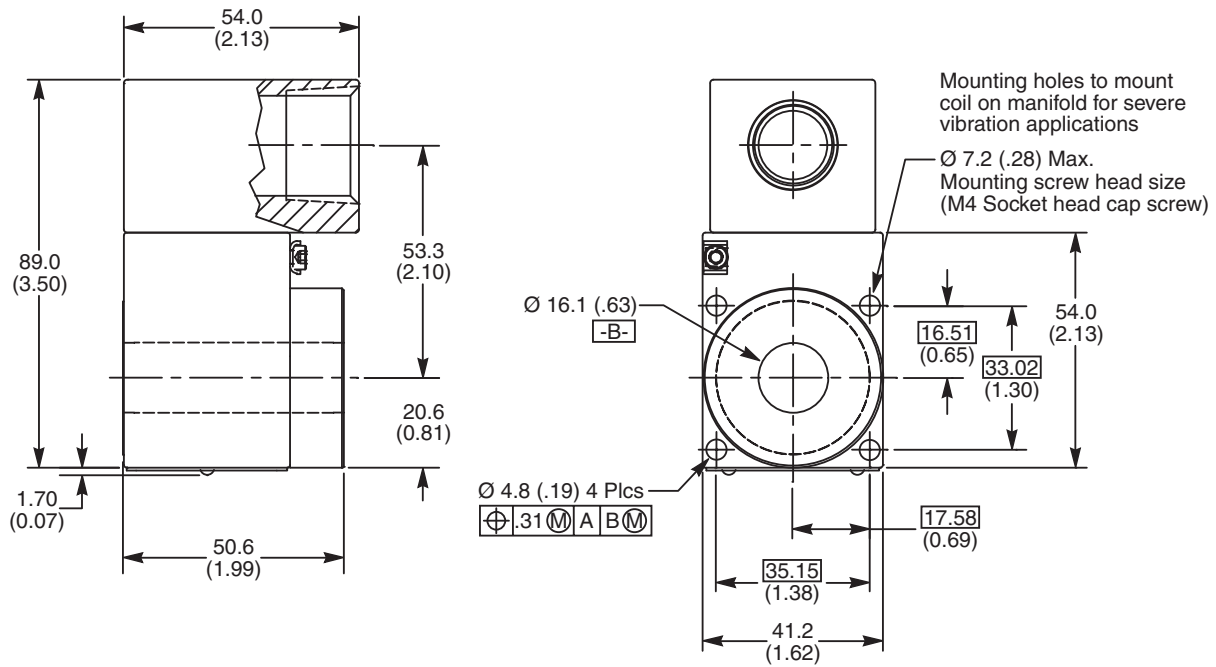
*±5% at 20°F

Code	Thread
JN	1/2 NPT
JA	M20 x 1.5 Metric

Notes:

- HLC Series performance varies from the standard Super Coil. Consult factory for valve performance in applying the HLC series coil.
- HLC Series is designed for two position, on-off solenoid products in the standard catalog. Consult factory for applications utilizing other products.

Dimensions Millimeters (Inches)



Hazardous Certifications Table

Protection Method	Hazardous Code	Hazardous Detail	Certification Agency	Location
Explosion Proof	XP	Class I, Div 1 GRP B,C,D	CSA (C & US)	North America
Flame Proof	Ex db	Zone 1, 2G IIC	ATEX IECEx	Europe International
Dust Ignition	DIP	Class II, Div 1, GRP E,F,G	CSA (C & US)	North America
Dust-tight Enclosure	Ex tb	Zone 21, 2D, IIIC	ATEX IECEx	Europe International

Hazardous Certifications

Complies with IEC 60079-0:2011, IEC 60079-1:2007, IEC 60079-31:2013

Ex db IIC Gb
 Ex tb IIIC Db IP66
 IECEx CSA 16.0013X

ATEX: EN60079-0, EN60079-1, EN60079-31

CE 1180 **Ex** II 2G SIRA16ATEX1091X

CSA 22.2 No. 60079-0:07, E60079-1:07 and UL60079-0:05, UL60079-1:05

CSA LISTED TO U.S. and CANADA SAFETY STANDARDS.
 REPORT: 70039028

Ex d IIC, AEx d IIC for CLASS I ZONE 1
 CLASS I DIV 1 GRP. B, C & D
 CLASS II DIV 1 GRP. E, F & G

- CV**
Check Valves
- SH**
Shuttle Valves
- LM**
Load/Motor Controls
- FC**
Flow Controls
- PC**
Pressure Controls
- LE**
Logic Elements
- DC**
Directional Controls
- MV**
Manual Valves
- SV**
Solenoid Valves
- PV**
Proportional Valves
- CE**
Coils & Electronics
- BC**
Bodies & Cavities
- TD**
Technical Data