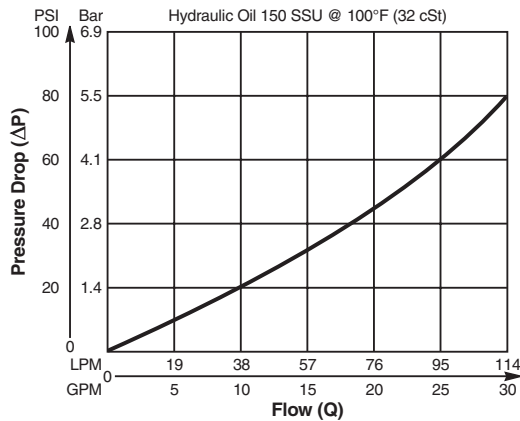


Valve/Cavity Compatibility

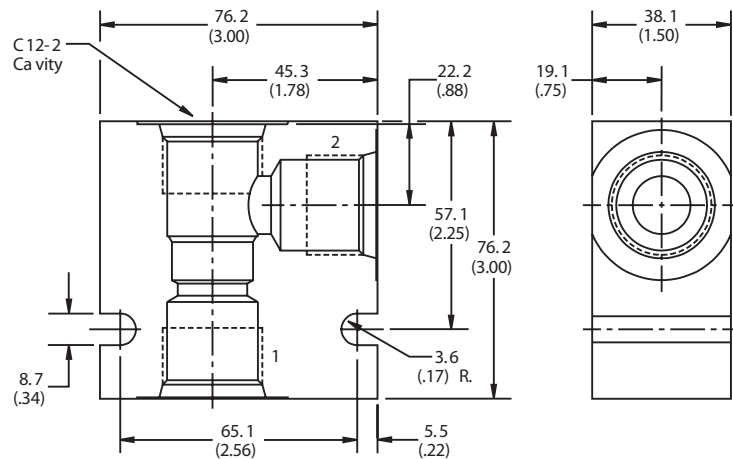
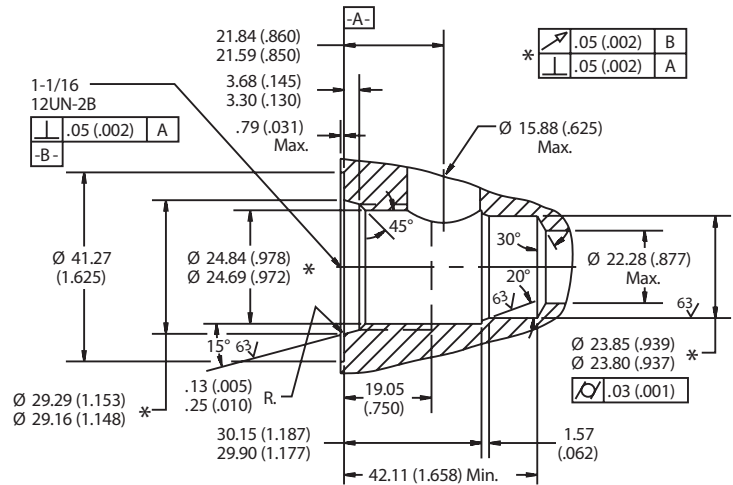
For additional information see Technical Tips on pages BC2-BC3.

| | | VALVE | | | |
|--------|----------|--------|----------|-----|-----|
| | | Parker | Waterman | FPS | CEC |
| CAVITY | Parker | X | X | | |
| | Waterman | X | X | | |
| | FPS | | | | |
| | CEC | | | | X |

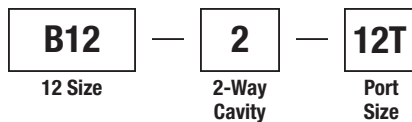
Performance Curve
Pressure Drop vs. Flow



Dimensions Millimeters (Inches)



Ordering Information



| Code | Port Size |
|------|--------------------------|
| 12T | SAE - 12/Steel (5000PSI) |

Weight: .45 kg (1.0 lbs.)

- CV**
Check Valves
- SH**
Shuttle Valves
- LM**
Load/Motor Controls
- FC**
Flow Controls
- PC**
Pressure Controls
- LE**
Logic Elements
- DC**
Directional Controls
- SV**
Solenoid Valves
- PV**
Proportional Valves
- CE**
Coils & Electronics
- BC**
Bodies & Cavities
- TD**
Technical Data