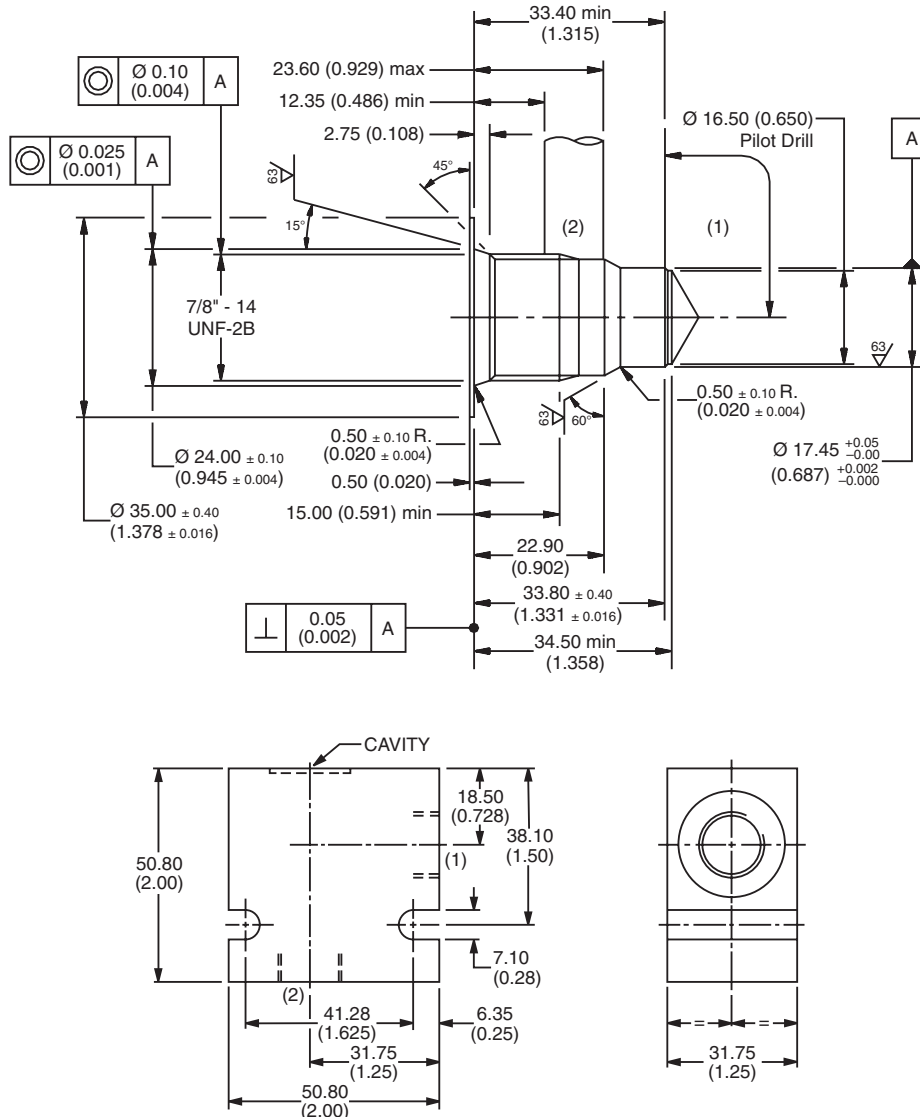
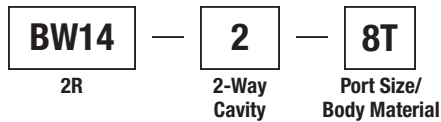


For additional information see Technical Tips on pages BC2-BC3.

Dimensions
 Millimeters (Inches)



Ordering Information



Code	Body Material
8T	SAE - 8/Steel (5000PSI)

*Please be advised that this is a non-core line body.
 Additional lead-time and/or pricing requirements may exist when ordering.

- CV Check Valves
- SH Shuttle Valves
- LM Load/Motor Controls
- FC Flow Controls
- PC Pressure Controls
- LE Logic Elements
- DC Directional Controls
- SV Solenoid Valves
- PV Proportional Valves
- CE Coils & Electronics
- BC Bodies & Cavities
- TD Technical Data