

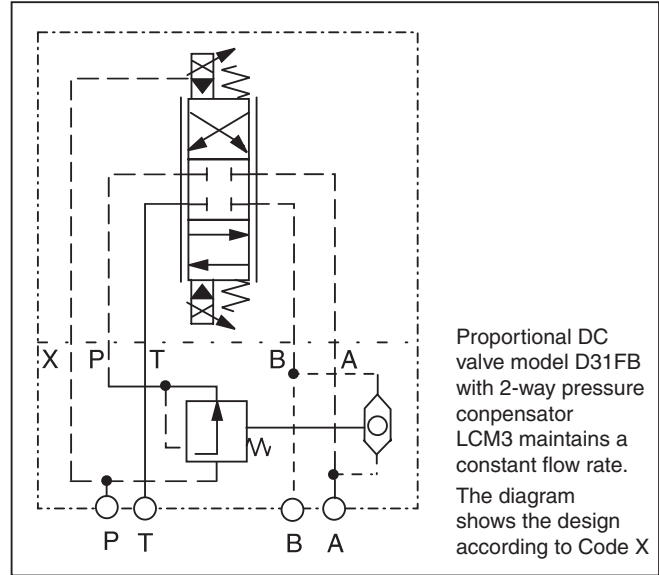
General Description

Series LCM 2-way pressure compensators are sandwich valves designed for stacking beneath a proportional directional control valve with a standardized mounting pattern.

The valve maintains a constant pressure differential between ports P and A or P and B across the directional valve. When the cross sectional opening of the directional valves is held steady, a constant flow rate is achieved, regardless of load fluctuations.

The control pressure applied to the spring side of the compensator spool is supplied from port A or B via a shuttle valve. Flow rate regulation is automatically effective in the port with the highest pressure.

Application Example



B

Specifications

General		
Size	NG6	NG10
Mounting Position	NFPA D03 CETOP 3	NFPA D05 CETOP 5
Maximum Flow	20 LPM (5.28 GPM)	52 LPM (13.73 GPM)
Maximum Operating Pressure	350 Bar (5075 PSI)	
Pressure Differential	10 Bar (145 PSI)	

Ordering Information

<div style="border: 1px solid black; padding: 2px; width: 40px; margin: 0 auto;">LCM</div> <p>Pressure Compensator</p>	<div style="border: 1px solid black; width: 30px; height: 30px; margin: 0 auto;"></div> <p>Size</p>	<div style="border: 1px solid black; padding: 2px; width: 40px; margin: 0 auto;">PP</div> <p>Control Connection</p>	<div style="border: 1px solid black; width: 30px; height: 30px; margin: 0 auto;"></div> <p>Pilot Oil</p>	<div style="border: 1px solid black; padding: 2px; width: 40px; margin: 0 auto;">02</div> <p>Differential Pressure 10 Bar (14.5 PSI)</p>	<div style="border: 1px solid black; padding: 2px; width: 40px; margin: 0 auto;">V</div> <p>Seal Fluorocarbon</p>	<div style="border: 1px solid black; width: 30px; height: 30px; margin: 0 auto; display: flex; align-items: center; justify-content: center;"> { } </div> <p>Design Series</p> <p>NOTE: Not required when ordering.</p> <p>Weight: LCM2 2.5 kg (5.5 lbs.) LCM3 3.1 kg (6.8 lbs.)</p>
--	---	---	--	--	---	--

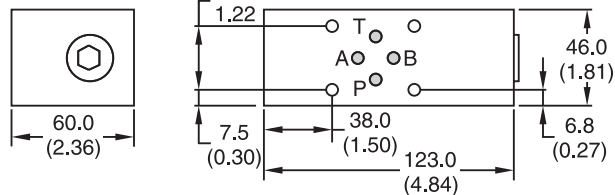
Code	Description
2	NG6
3	NG10

Code	Description
Omit	Internal
X*	External

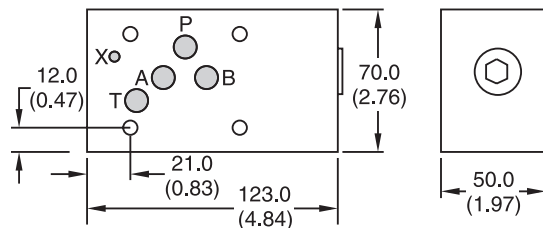
* NG10 only.

Dimensions — Inch equivalents for millimeter dimensions are shown in (**)

LCM2



LCM3



Mounting Screws: BK403 (4) M5 x 90
 For mounting screws connected with directional valves D1 or 2-stage valves

Mounting Screws: BK412 (4) M6 x 90
 The views show the mounting surface for the directional valve

WARNING: This product can expose you to chemicals including Lead, Nickel (Metallic), or 1,3-Butadiene which are known to the State of California to cause cancer, and Lead or 1,3-Butadiene which is known to the State of California to cause birth defects and other reproductive harm. For more information go to www.P65Warnings.ca.gov.

B01_Cat2550.indd, ddp, 04/19