

**Characteristics / Ordering Code**

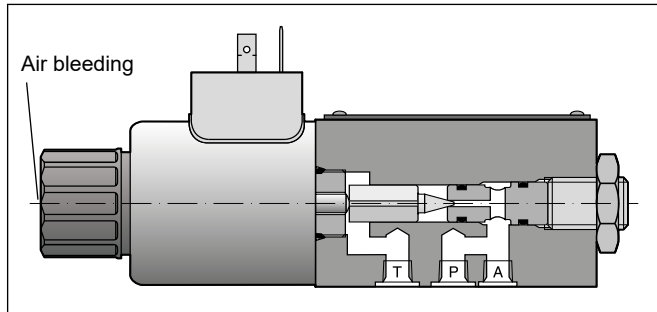
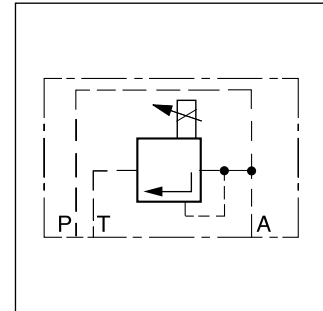
Pressure relief valves of the series RE06M\*W are direct operated proportional valves typically used as remote control valves for flow rates below 3 l/min.

**Function**

When the pressure in port P or A exceeds the pressure setting at the solenoid, the cone opens to port T and limits the pressure in port P to the adjusted level.

The optimum performance can be achieved in combination with the digital amplifier module PCD00A-400.

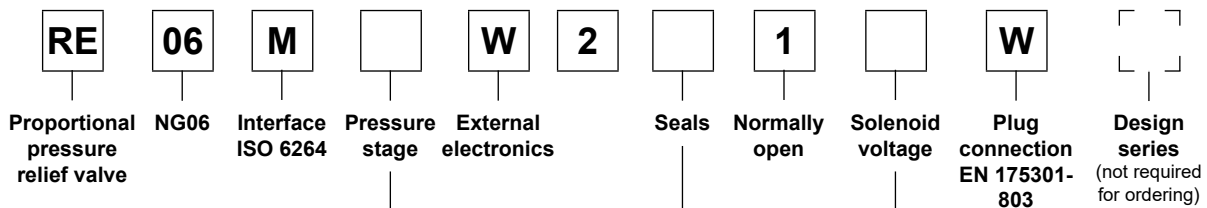
Also available as sandwich valve, see Chapter 8, Pilot valves series RPDM.



**4 Features**

- Direct operated with proportional solenoid
- Very low pressure adjustment of  $p_{min}$
- 2 pressure ports, A and P
- Subplate mounting according to ISO 6264
- 4 pressure stages

**Ordering Code**



Code	Pressure stage
10	up to 105 bar
<b>17</b>	<b>up to 175 bar</b>
25	up to 250 bar
<b>35</b>	<b>up to 350 bar</b>

Code	Solenoid voltage
<b>K</b>	<b>12 V, 2.5 A</b>
X	16 V, 1.3 A

Code	Seals
N	NBR
<b>V</b>	<b>FPM</b>

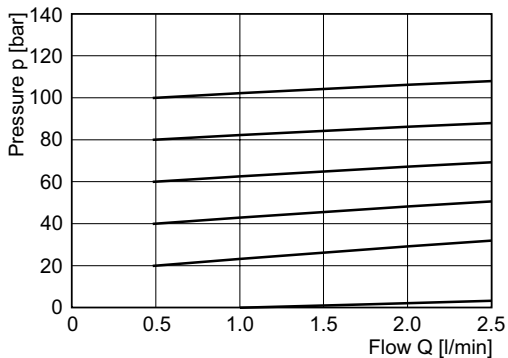
**Bold letters = Short-term availability**

**Technical Data**

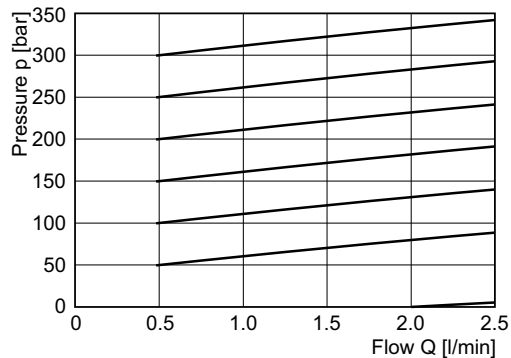
<b>General</b>	
Nominal size	DIN NG06 / CETOP 03 / NFPA D03
Interface	Subplate mounting according to ISO 6264
Mounting position	Unrestricted, horizontal mounting preferred
Ambient temperature [°C]	-20 ... +60
MTTF <sub>D</sub> value [years]	150
Weight [kg]	1.8
<b>Hydraulic</b>	
Max. operating pressure [bar]	Ports P and A up to 350; port T 30
Pressure stages [bar]	105, 175, 250, 350
Nominal flow [l/min]	See p/Q curves
Fluid	Hydraulic oil according to DIN 51524
Viscosity, permitted [cSt] / [mm <sup>2</sup> /s]	20 ... 400
Viscosity, recommended [cSt] / [mm <sup>2</sup> /s]	30 ... 80
Fluid temperature [°C]	-20...+70 (NBR: -25...+70)
Filtration	ISO 4406; 18/16/13
Linearity [%]	±2.8
Repeatability [%]	<±1
Hysteresis [%]	±1.5 of p <sub>max</sub>
<b>Electrical</b>	
Duty ratio [%]	100 ED
Protection class	IP65 in accordance with EN 60529 (with correctly mounted plug-in connector)
Nominal voltage [V]	12 (2.5 A max. current), 16 (1.3 A max. current)
Coil resistance at 20 °C [Ohm]	4.28 (at 12 V), 12 (at 16 V)
Solenoid connection	Connector as per EN 175301-803
Power amplifier, recommended	PCD00A-400

**p/Q curves**

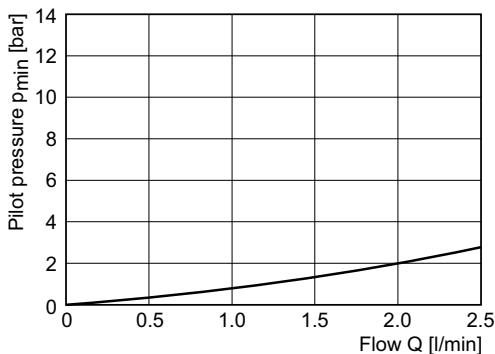
**Pressure stage 105 bar**



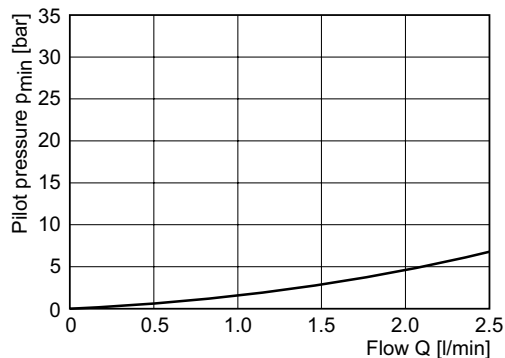
**Pressure stage 350 bar**



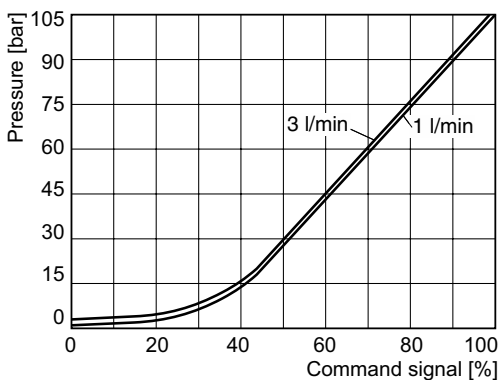
**Min. adjusted pressure**  
**Pressure stage 105 bar**



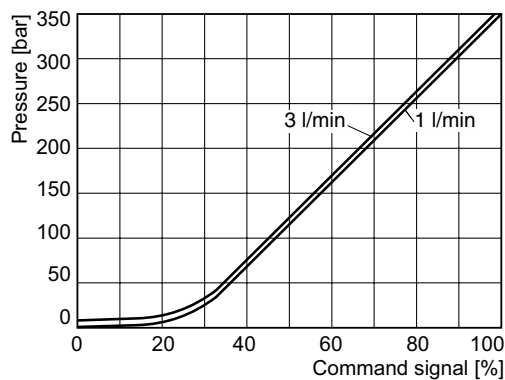
**Pressure stage 350 bar**



**Pressure/signal curve**  
**Pressure stage 105 bar**

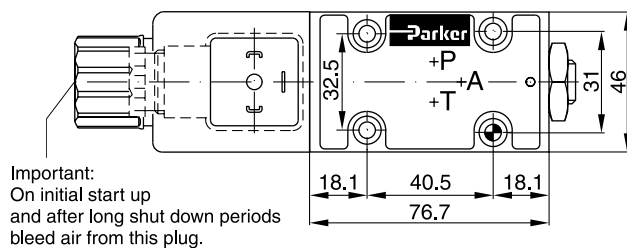


**Pressure stage 350 bar**

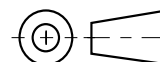
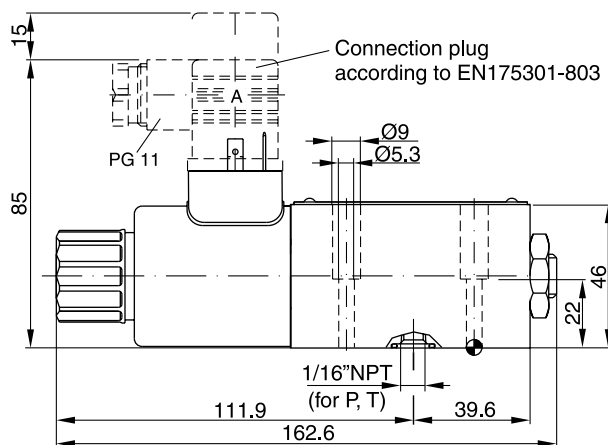


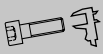
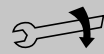

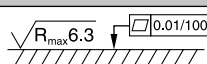
All characteristic curves measured with HLP46 at 50 °C.

**RE06M\*W**



Important:  
 On initial start up  
 and after long shut down periods  
 bleed air from this plug.



Surface finish	Bolt kit			NBR  Kit	FPM
	BK375	4x M5x30 ISO 4762-12.9	7.6 Nm ±15 %	SK-RE06MWN	SK-RE06MWV

**Mounting pattern ISO 6264-03-04-\*-97**

