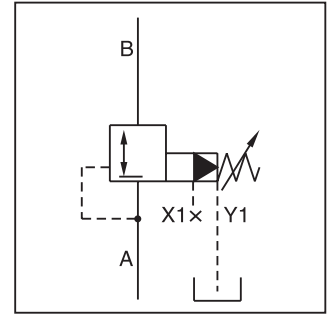
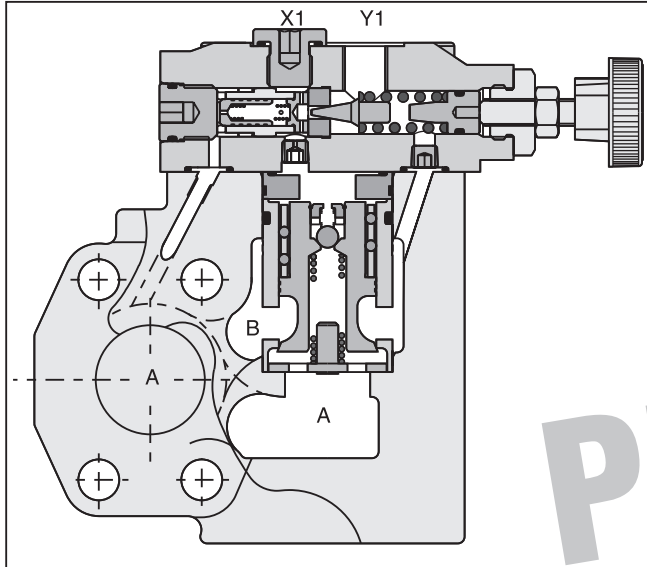


General Description

Series R5R pilot operated pressure reducing valves have a similar design as the subplate mounted R4R series. The SAE flanges allow to mount the valves directly on the inlet flanges of actuators to achieve a very compact design.



Features

- Pilot operated with manual adjustment
- Normally closed to avoid unintended motion
- 2-port body with SAE61 flange
- 3 sizes (SAE 3/4", 1", 1-1/4")
- 3 pressure stages
- 3 adjustment modes:
 - Hand knob
 - Acorn nut with lead seal
 - Key lock
- With optional vent function
- Flow direction B → A

D

Phase Out

Ordering Information

R5R	□	—	□	2	□	□	6	□	□	A	□	□
Pressure Reducing Valve	Size		SAE 61 Interface	2-Port Body X1, Y1 = SAE 4	Pressure Range	Adjustment	External Drain from Y1 Port	Switching Type	Solenoid Voltage	Design Series	Seal	Options Check with Factory

Code	Description
06	SAE 3/4"
08	SAE 1"
10	SAE 1-1/4"

Code	Size	Max. Pressure
4	10	280 Bar (4060 PSI)
5	06/08	350 Bar (5075 PSI)

Code	Description
1	Hand Knob
3	Acorn Nut with Lead Seal
4	Key Lock

Code	Description
Omit	Standard w/o vent function
G0R	12V
G0Q	24V
GAR	98V
GAG	205V
W30	110V 50Hz/ 120V 60Hz
W31	220V 50Hz/ 240V 60Hz

Code	Description
1	Nitrile
5	Fluorocarbon

Code	Description
Omit	Standard w/o vent function
09*	Solenoid not activ. unpress. circulation
11**	Solenoid activated unpress. circulation

Further options on request.

Weight:

R5R06	4.0 kg (8.8 lbs.)
R5R08	4.6 kg (10.1 lbs.)
R5R10	5.9 kg (13.0 lbs.)

* Sol. de-energized: open to tank
 Sol. energized: vent line blocked

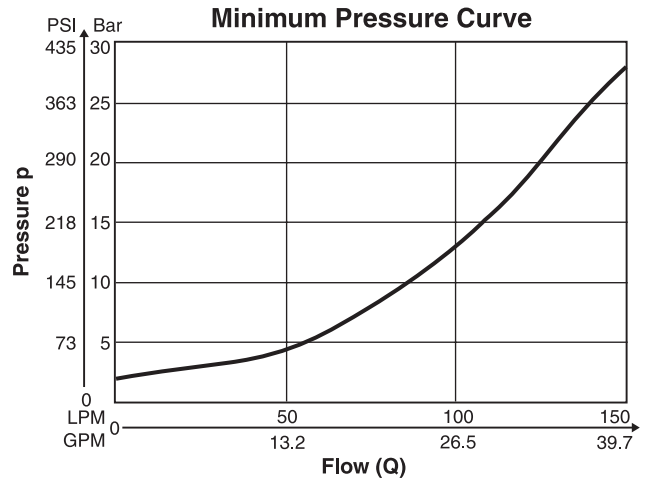
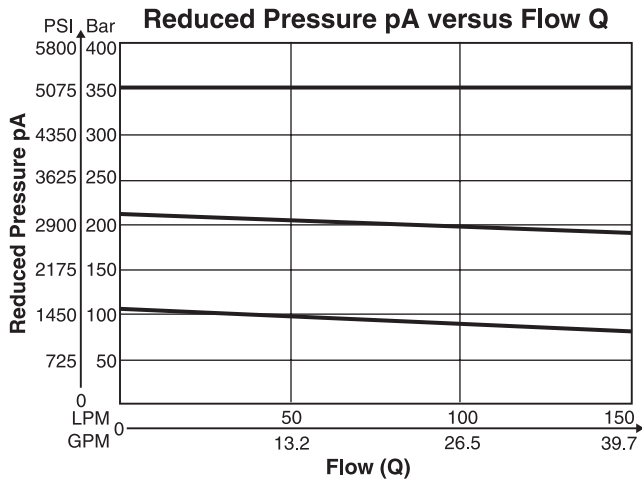
** Sol. de-energized: vent line blocked
 Sol energized: open to tank

WARNING: This product can expose you to chemicals including Lead, Nickel (Metallic), or 1,3-Butadiene which are known to the State of California to cause cancer, and Lead or 1,3-Butadiene which is known to the State of California to cause birth defects and other reproductive harm. For more information go to www.P65Warnings.ca.gov.

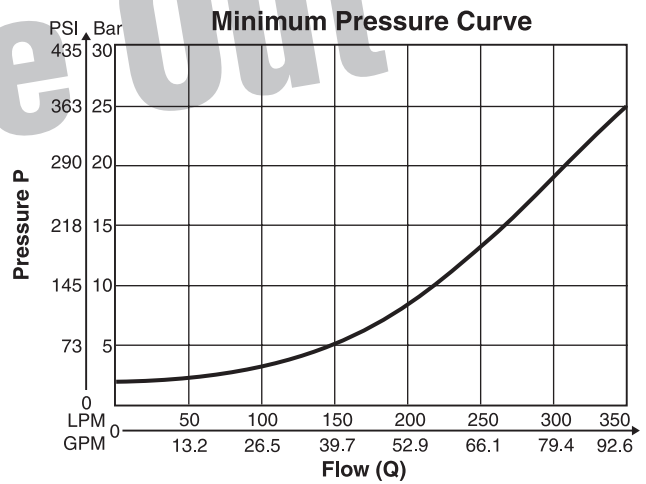
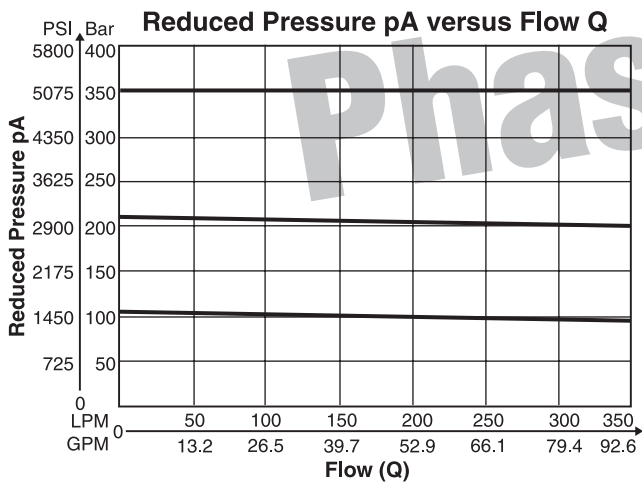
General						
Size	06		08		10	
Mounting	Flanged according to SAE 61					
Mounting Position	Unrestricted					
Ambient Temperature Range	-20°C to +50°C (-4°F to +122°F)					
Hydraulic						
Max. Operating Pressure	Ports A,B, X1	350 Bar (5075 PSI)		350 Bar (5075 PSI)		280 Bar (4060 PSI)
	Port Y1	30 Bar (435 PSI)		30 Bar (435 PSI)		30 Bar (435 PSI)
Pressure Ranges	105 Bar (1523 PSI), 210 Bar (3045 PSI), 350 Bar (5075 PSI)					
Nominal Flow	90 LPM (23.8 GPM)		300 LPM (79.4 GPM)		500 LPM (132.3 GPM)	
Fluid	Hydraulic oil as per DIN 51524 ... 51525					
Fluid Temperature	-20°C to +80°C (-4°F to +176°F)					
Viscosity Permitted Recommended	10 to 650 cSt / mm ² /s (46 to 3013 SSU) 30 cSt / mm ² /s (139 SSU)					
Filtration	ISO Class 4406 (1999) 18/16/13 (acc. NAS 1638: 7)					
Electrical (Solenoid)						
Duty Ratio	100%					
Solenoid Connection	Connector as per EN175301-803					
Protection Class	IP65 in accordance with EN60529 (plugged and mounted)					
Code	G0R	G0Q	GAR	GAG	W30	W31
Supply Voltage	12V	24V	98V	205V	110V at 50Hz 120V at 60Hz	2200V at 50Hz 240V at 60Hz
Tolerance Supply Voltage	+5 to -10	+5 to -10	+5 to -10	+5 to -10	±5	±5
Power Consumption	Hold	31W	31W	31W	31W	78W
	In Rush	31W	31W	31W	31W	264W
Response Time	Energized / De-energized AC 20/18ms, DC 46/27 ms					
Max. Switching Frequency	AC up to 7200, DC 70 to 16,000 switchings/hour					
Coil Insulation Class	H (180°C) (356°F)					

D

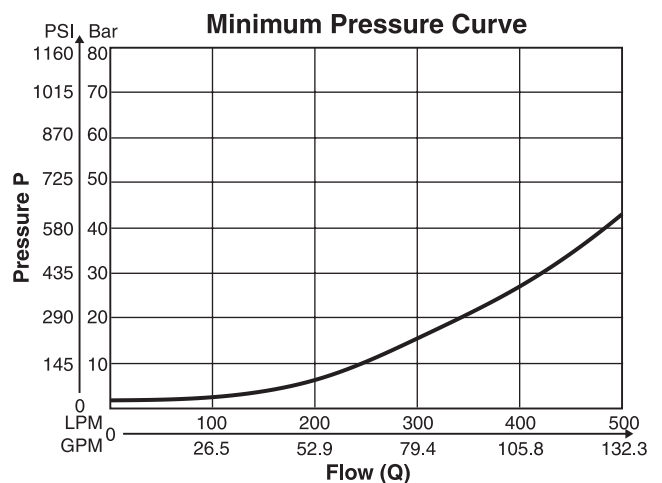
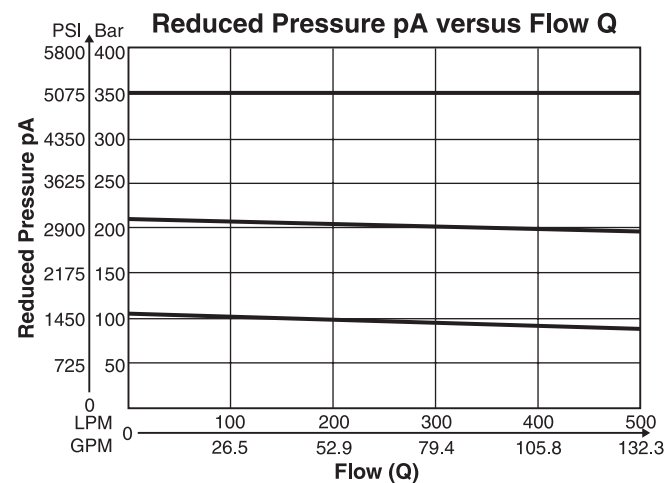
R5R06*



R5R08*



R5R10*

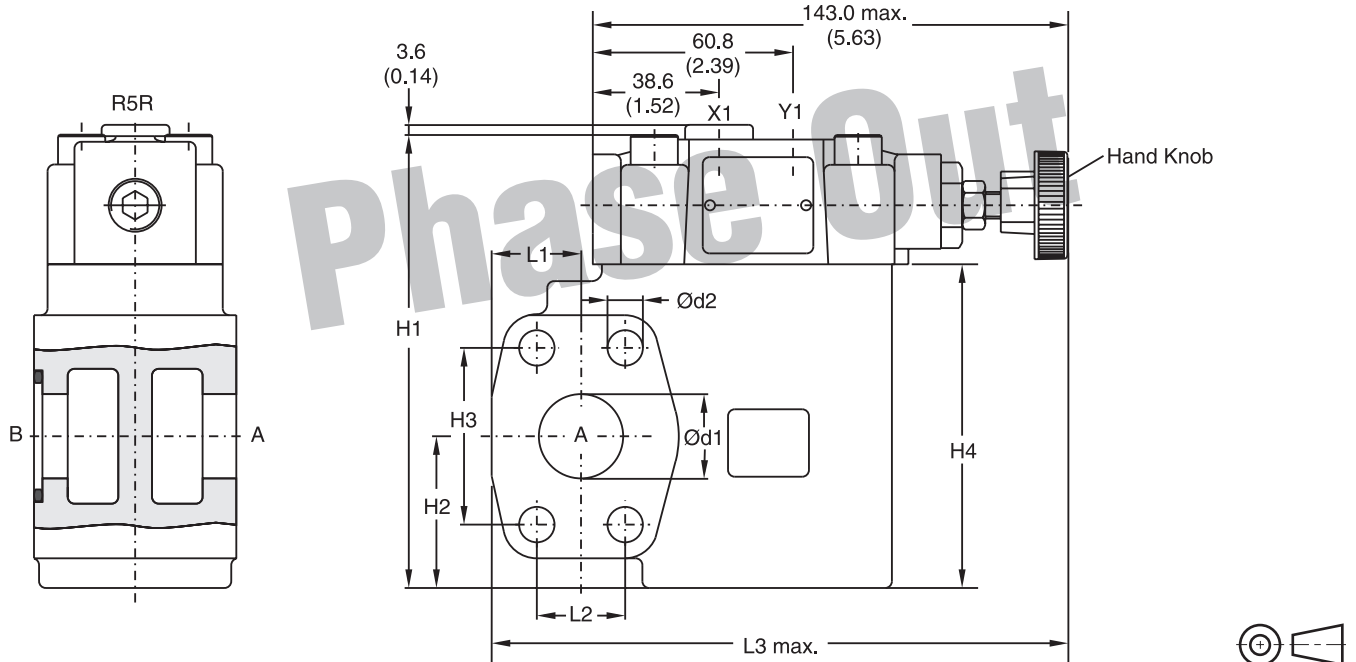
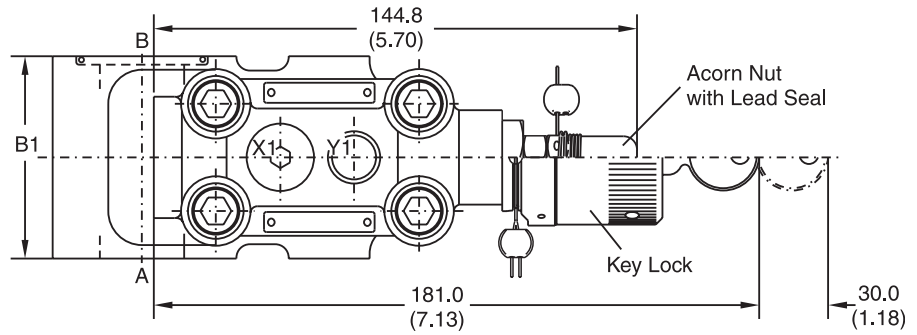


*Measured at 350 Bar (5075 PSI) primary pressure pB.

D

Phase Out

Inch equivalents for millimeter dimensions are shown in (**)



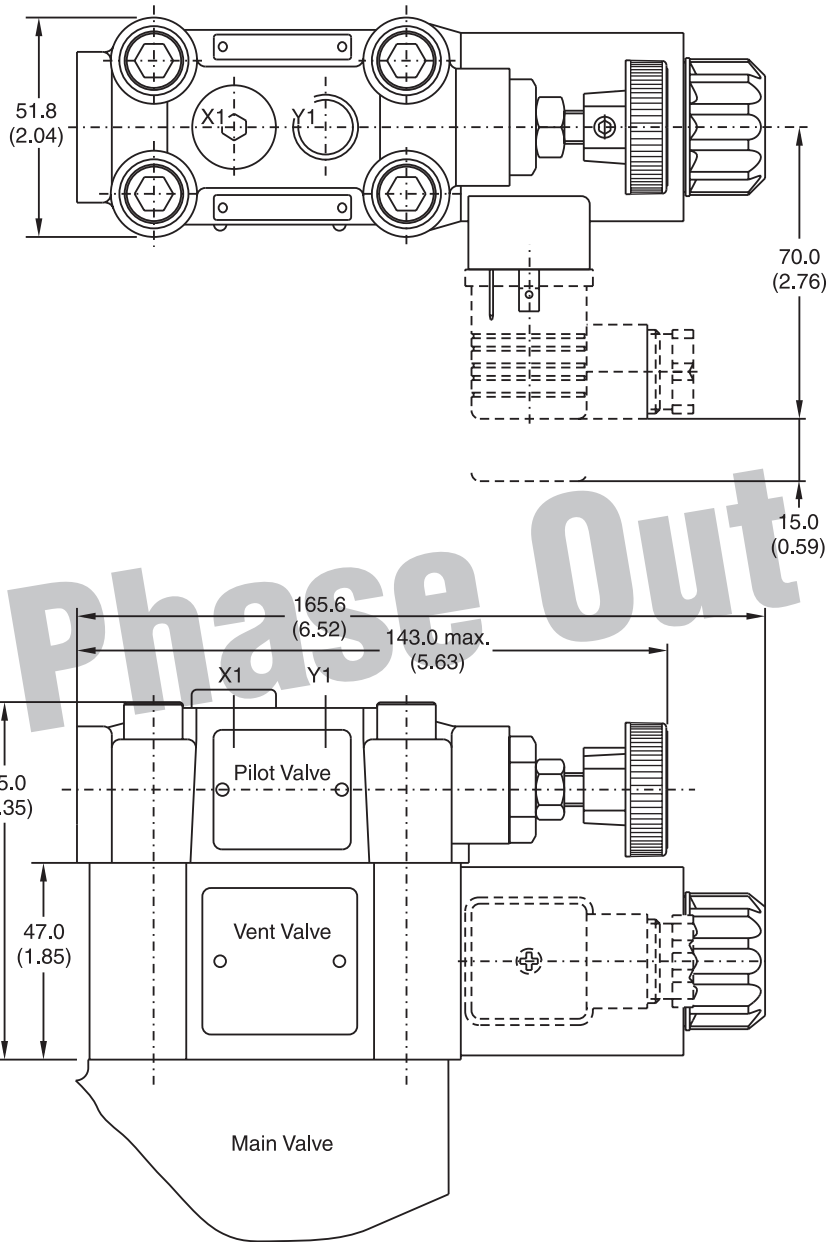
Seal Kits		
Size	Nitrile	Fluorocarbon
06	S16-91850-0	S16-91850-5
08	S16-91851-0	S16-91851-5
10	S16-91852-0	S16-91852-5

Size	B1	H1	H2	H3	H4	L1	L2	L3	d1	d2
06	60.0 (2.36)	131.6 (5.18)	37.0 (1.46)	47.6 (1.87)	90.0 (3.54)	24.6 (0.97)	22.2 (0.87)	152.0 (5.98)	19.0 (0.75)	10.5 (0.41)
08	60.0 (2.36)	137.6 (5.42)	45.0 (1.77)	52.4 (2.06)	96.0 (3.78)	26.5 (1.04)	26.2 (1.03)	171.0 (6.73)	25.0 (0.98)	10.5 (0.41)
10	75.0 (2.95)	150.6 (5.93)	48.0 (1.89)	58.7 (2.31)	109.0 (4.29)	34.0 (1.34)	30.2 (1.19)	179.0 (7.05)	32.0 (1.26)	12.5 (0.49)

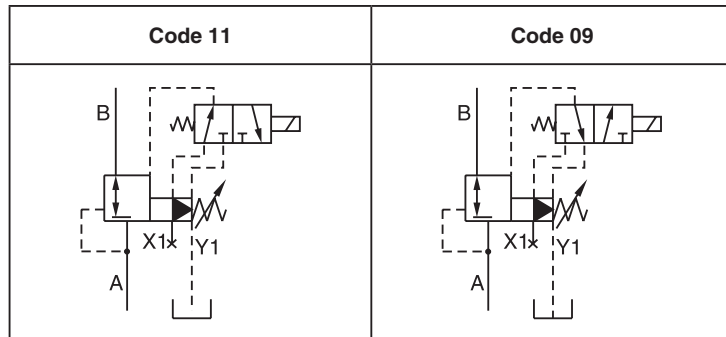
Port	Function	Port Size		
		R5R06	R5R08	R5R10
B	Inlet Pressure	3/4" SAE 61	1" SAE 61	1-1/4" SAE 61
A	Reduced Outlet Pressure	3/4" SAE 61	1" SAE 61	1-1/4" SAE 61
Y1	External Drain	SAE 4		
X1	Pressure Gauge	SAE 4		

Dimensions

Inch equivalents for millimeter dimensions are shown in (**)



External Drain



Vent Valve Seal Kits	
Nitrile	Fluorocarbon
DC Solenoid	
S26-58515-0	S26-58515-5
AC Solenoid	
S26-35237-0	S26-35237-5