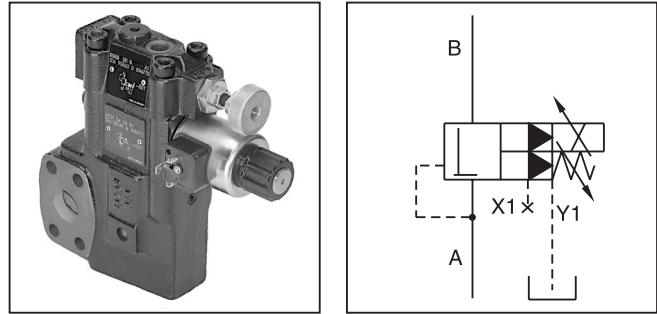


**General Description**

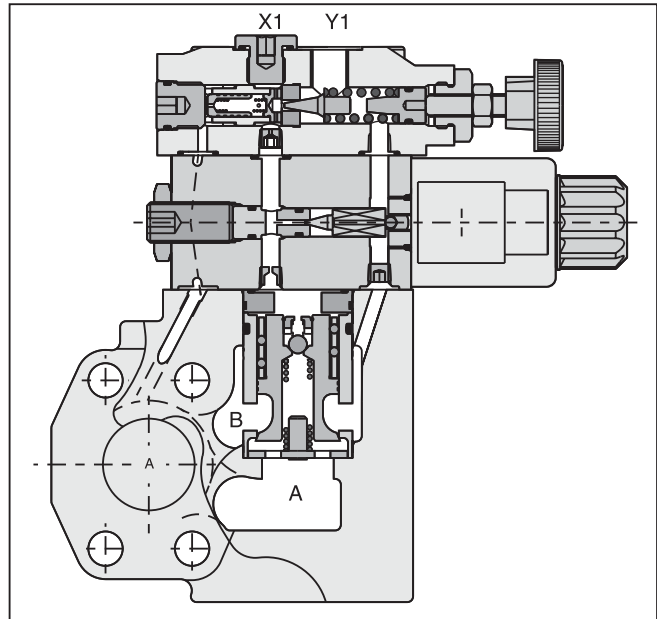
Series R5R\*P2 proportional pressure reducing valves are based on the mechanical adjusted Series R5R. The additional proportional unit between the mechanical pilot valve and the main stage allows continuous pressure adjustment. The optimum performance can be achieved in combination with the digital amplifier module PCD00A-400.



**B**

**Features**

- Pilot operated with proportional solenoid.
- Continuous adjustment by proportional solenoid.
- 2-port body with SAE 61 flange.
- 3 sizes (SAE Code 61 3/4", 1", 1-1/4").
- 3 pressure ranges.
- With mechanical maximum pressure adjustment.



**Ordering Information**

<b>R5R</b>	□	—	□	<b>8</b>	□	□	<b>6</b>	<b>P2</b>	<b>G0R</b>	<b>A</b>	□	□																				
Pressure Reducing Valve	Size		SAE 61 Interface	Body 2-Port X1, Y1 = G1/4"	Pressure Range	Adjustment	External Drain from Y1 Port	Proportional Pressure Control	Solenoid Voltage 12V 2.3A	Design Series	Seal	Options Check with Factory																				
<table border="0" style="width: 100%; border-collapse: collapse;"> <tr><th style="text-align: left;">Code</th><th style="text-align: left;">Description</th></tr> <tr><td>06</td><td>SAE 3/4"</td></tr> <tr><td>08</td><td>SAE 1"</td></tr> <tr><td>10</td><td>SAE 1-1/4"</td></tr> </table>	Code	Description	06	SAE 3/4"	08	SAE 1"	10	SAE 1-1/4"						<table border="0" style="width: 100%; border-collapse: collapse;"> <tr><th style="text-align: left;">Code</th><th style="text-align: left;">Description</th></tr> <tr><td>1</td><td>Hand Knob</td></tr> <tr><td>3</td><td>Acorn Nut with Lead Seal</td></tr> </table>	Code	Description	1	Hand Knob	3	Acorn Nut with Lead Seal				<table border="0" style="width: 100%; border-collapse: collapse;"> <tr><th style="text-align: left;">Code</th><th style="text-align: left;">Description</th></tr> <tr><td>1</td><td>Nitrile</td></tr> <tr><td>5</td><td>Fluorocarbon</td></tr> </table>	Code	Description	1	Nitrile	5	Fluorocarbon		
Code	Description																															
06	SAE 3/4"																															
08	SAE 1"																															
10	SAE 1-1/4"																															
Code	Description																															
1	Hand Knob																															
3	Acorn Nut with Lead Seal																															
Code	Description																															
1	Nitrile																															
5	Fluorocarbon																															
	<table border="0" style="width: 100%; border-collapse: collapse;"> <tr><th style="text-align: left;">Code</th><th style="text-align: left;">Size</th><th style="text-align: left;">Max. Pressure</th></tr> <tr><td>4</td><td>10</td><td>280 Bar (4060 PSI)</td></tr> <tr><td>5</td><td>06/08</td><td>350 Bar (5075 PSI)</td></tr> </table>	Code	Size	Max. Pressure	4	10	280 Bar (4060 PSI)	5	06/08	350 Bar (5075 PSI)			<table border="0" style="width: 100%; border-collapse: collapse;"> <tr><th style="text-align: left;">Code</th><th style="text-align: left;">Description</th></tr> <tr><td>1</td><td>up to 105 Bar (1523 PSI)</td></tr> <tr><td>3</td><td>up to 210 Bar (3045 PSI)</td></tr> <tr><td>5</td><td>up to 350 Bar (5075 PSI)</td></tr> </table>	Code	Description	1	up to 105 Bar (1523 PSI)	3	up to 210 Bar (3045 PSI)	5	up to 350 Bar (5075 PSI)						<p><b>Weight:</b>                  R5R06*P2    5.8 kg (12.8 lbs.)                  R5R08*P2    6.4 kg (14.1 lbs.)                  R5R10*P2    7.7 kg (17.0 lbs.)</p>					
Code	Size	Max. Pressure																														
4	10	280 Bar (4060 PSI)																														
5	06/08	350 Bar (5075 PSI)																														
Code	Description																															
1	up to 105 Bar (1523 PSI)																															
3	up to 210 Bar (3045 PSI)																															
5	up to 350 Bar (5075 PSI)																															

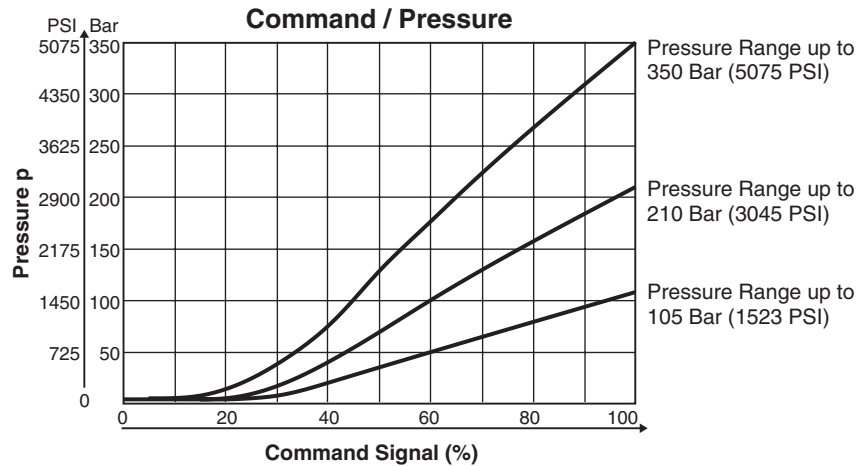
Further options on request.

**Specifications**

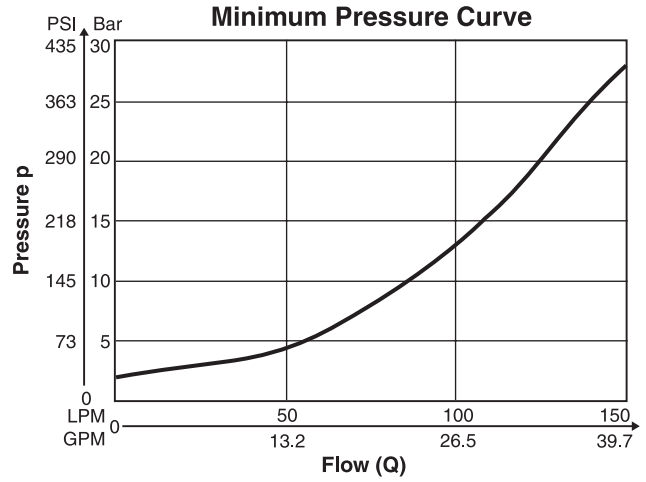
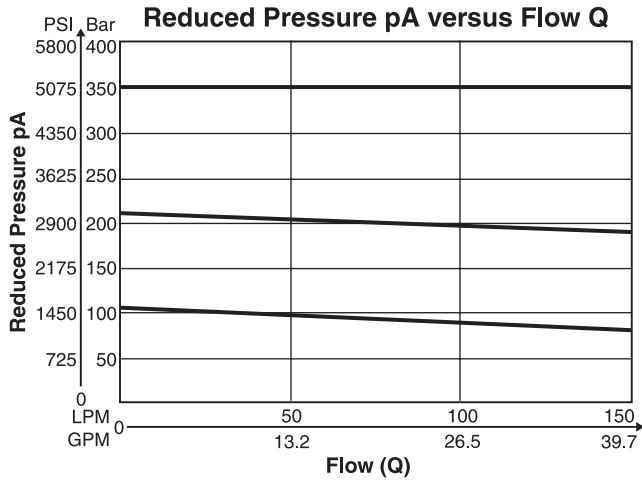
General		06	08	10
Size				
Mounting	Flanged according to SAE 61			
Mounting Position	Unrestricted			
Ambient Temperature Range	-20°C to +50°C (-4°F to +122°F)			
Hydraulic				
Max. Operating Pressure	Ports A,B, X1	350 Bar (5075 PSI)	350 Bar (5075 PSI)	280 Bar (4060 PSI)
	Port Y1	30 Bar (435 PSI)	30 Bar (435 PSI)	30 Bar (435 PSI)
Pressure Ranges	105 Bar (1523 PSI), 210 Bar (3045 PSI), 350 Bar (5075 PSI)			
Nominal Flow	90 LPM (23.8 GPM)	300 LPM (79.4 GPM)	500 LPM (132.3 GPM)	
Fluid	Hydraulic oil as per DIN 51524...51535, other on request			
Fluid Temperature	-20°C to +80°C (-4°F to +176°F)			
Viscosity	Permitted Recommended	10 to 650 cSt / mm <sup>2</sup> /s (46 to 3013 SSU)		
		30 to 80 cSt / mm <sup>2</sup> /s (139 to 371 SSU)		
Filtration	ISO Class 4406 (1999) 18/16/13 (acc. NAS 1638: 7)			
Electrical (Solenoid)				
Duty Ratio	100% ED; CAUTION: Coil temperature up to 150°C (302°F) possible			
Nominal Voltage	12 VDC			
Maximum Current	2.3 amps			
Coil Resistance	4 Ohm at 20°C (68°F)			
Solenoid Connection	Connector as per EN175301-803, Solenoid identificaton as per ISO9461			
Protection Class	IP65 in accordance with EN60529 (plugged and mounted)			
Power Amplifier	PCD00A-400			

**B**

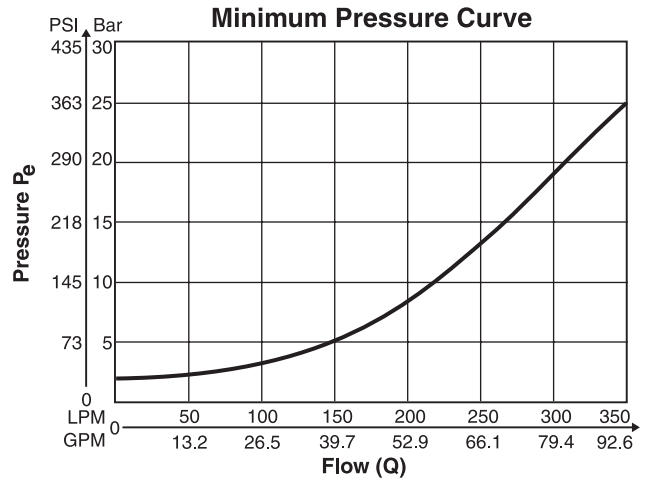
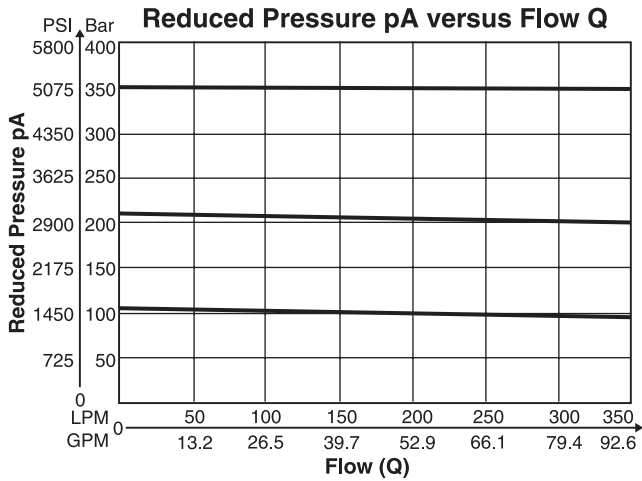
**Performance Curves**



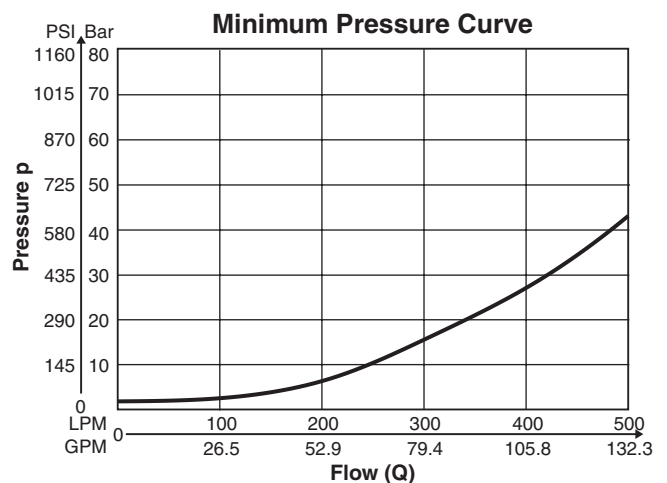
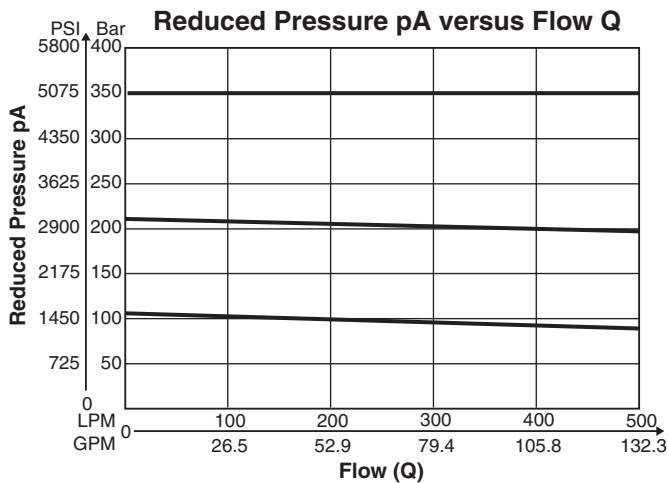
**R5R06\*P2 1)**



**R5R08\* P2 1)**



**R5R10\* P2 1)**



1) Measured at 350 Bar (5075 PSI) primary pressure pB.

**B**

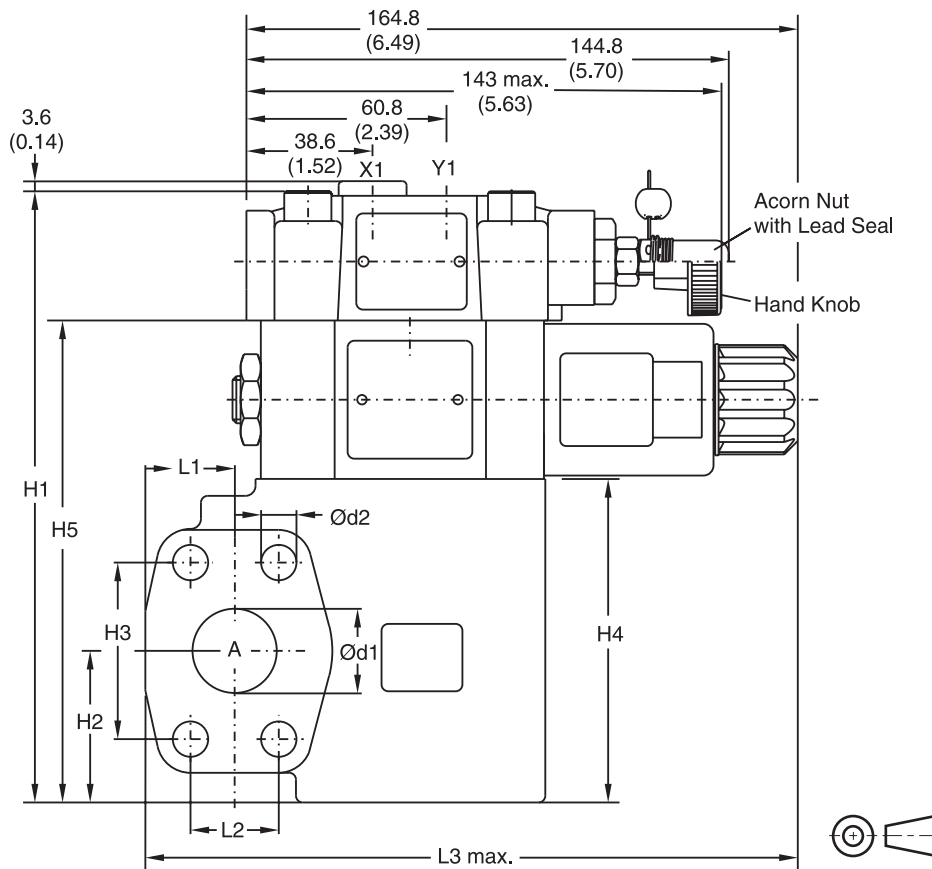
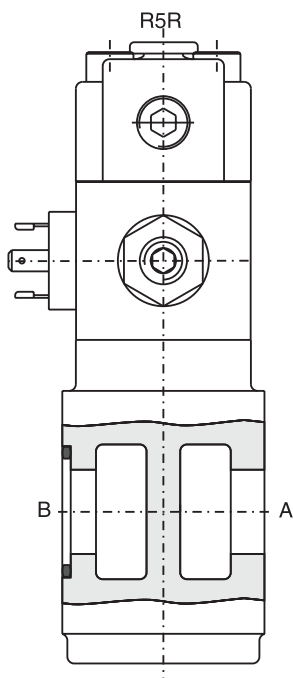
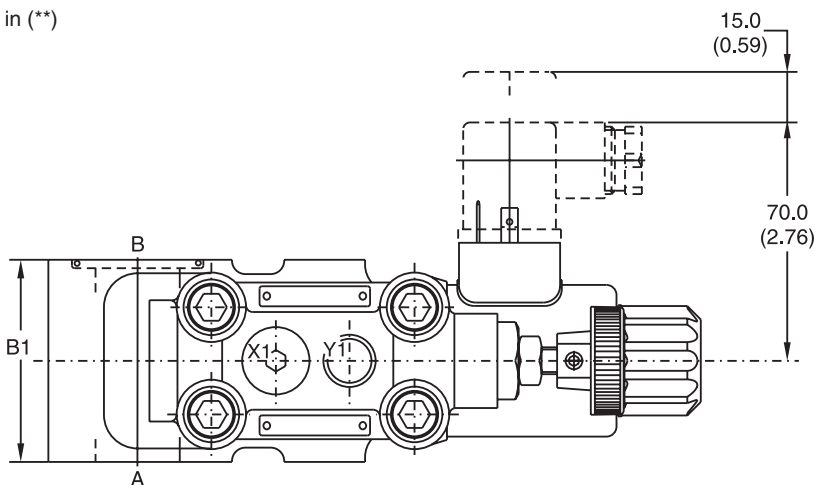
**Dimensions**

**Proportional Pressure Reducing Valves  
Series R5R\*P2 (Flange Mounted)**

Inch equivalents for millimeter dimensions are shown in (\*\*)

Seal Kits		
Size	Nitrile	Fluorocarbon
06	S16-91850-0	S16-91850-5
08	S16-91851-0	S16-91851-5
10	S16-91852-0	S16-91852-5
Prop. Section P2*	S26-58473-0	S26-58473-5

\* Please combine seal kit of one size with seal kit of Prop. Section P2 for complete seal kit.



Size	B1	H1	H2	H3	H4	H5	L1	L2	L3	d1	d2
06	60.0 (2.36)	175.0 (6.89)	37.0 (1.46)	47.6 (1.87)	90.0 (3.54)	137.0 (5.39)	24.6 (0.97)	22.2 (0.87)	174.0 (6.85)	19.0 (0.75)	10.5 (0.41)
08	60.0 (2.36)	181.0 (7.13)	45.0 (1.77)	52.4 (2.06)	96.0 (3.78)	143.0 (5.63)	26.5 (1.04)	26.2 (1.03)	193.6 (7.62)	25.0 (0.98)	10.5 (0.41)
10	75.0 (2.95)	194.0 (7.64)	48.0 (1.89)	58.7 (2.31)	109.0 (4.29)	156.0 (6.14)	34.0 (1.34)	30.2 (1.19)	201.0 (7.91)	32.0 (1.26)	12.5 (0.49)

Port	Function	Port Size		
		R5R06	R5R08	R5R10
B	Inlet Pressure	3/4" SAE 61	1" SAE 61	1-1/4" SAE 61
A	Reduced Outlet Pressure	3/4" SAE 61	1" SAE 61	1-1/4" SAE 61
Y1	External Drain	G1/4"		
X1	Pressure Gauge	G1/4"		

R5R\_P2.indd, ddp

