



aerospace
climate control
electromechanical
filtration
fluid & gas handling
hydraulics
pneumatics
process control
sealing & shielding



Diesel Retail Basics

Distributors Product Overview



ENGINEERING YOUR SUCCESS.

025 Series

Fuel Filter/Water Separator



Specifications	025-RAC-01	025-RAC-02
Maximum Flow Rate	15 GPH (57 LPH)	15 GPH (57 LPH)
Height	4.3 in. (10.9 cm)	4.3 in. (10.9 cm)
Weight Dry	0.3 lb (0.1 kg)	0.3 lb (0.1 kg)
Width	2.3 in. (5.8 cm)	2.3 in. (5.8 cm)
Depth	2.1 in. (5.3 cm)	2.1 in. (5.3 cm)
Port Size	1/4"-18 NPTF	1/4"-18 NPTF
Replacement Filter	S2501	S2502
Micron Rating	250	10

100 Series

Fuel Filter/Water Separator



Specifications	120A	120B
Maximum Flow Rate	15 GPH (57 LPH)	20 GPH (76 LPH)
Height	6.5 in. (16.5 cm)	8.0 in. (20.3 cm)
Weight Dry	1.1 lbs (0.50 kg)	1.2 lbs (0.54 kg)
Width	3.2 in. (8.1 cm)	3.2 in. (8.1 cm)
Depth	3.2 in. (8.1 cm)	3.2 in. (8.1 cm)
Port Size	1/4"-18 NPTF	1/4"-18 NPTF
Replacement Element and Micron Rating	R12S - 2 micron R12T - 10 micron R12P - 30 micron	R13S - 2 micron R13T - 10 micron R13P - 30 micron

200 Series

Fuel Filter/Water Separator



Specifications	215R	230R	245R
Maximum Flow Rate	15 GPH (57 LPH)	30 GPH (114 LPH)	45 GPH (170 LPH)
Height	11.0 in. (27.9 cm)	9.0 in. (22.9 cm)	10.5 in. (26.7 cm)
Weight Dry	1.8 lbs (0.82 kg)	2.0 lbs (0.91 kg)	2.2 lbs (1.0 kg)
Width	3.9 in. (9.9 cm)	3.9 in. (9.9 cm)	3.9 in. (9.9 cm)
Depth	4.0 in. (10.2 cm)	4.0 in. (10.2 cm)	4.0 in. (10.2 cm)
Port Size	1/4"-18 NPTF	1/4"-18 NPTF	1/4"-18 NPTF
Replacement Element and Micron Rating	R15S - 2 micron R15T - 10 micron R15P - 30 micron	R20S - 2 micron R20T - 10 micron R20P - 30 micron	R25S - 2micron R25T - 10 micron R25P - 30 micron

300 Series

Fuel Filter/Water Separator



Specifications	325R	330R	3150R	3250R
Maximum Flow Rate	60 GPH (227 LPH)	75 GPH (284 LPH)	150 GPH (568 LPH)	250 GPH (946 LPH)
Height	9.7 in. (24.6 cm)	11.0 in. (27.9 cm)	13.6 in. (34.5 cm)	17.3 in. (43.9 cm)
Weight Dry	3.1 lbs (1.4 kg)	3.1 lbs (1.4 kg)	3.6 lbs (1.6 kg)	4.6 lbs (2.1 kg)
Width	4.4 in. (11.2 cm)	4.4 in. (11.2 cm)	4.75 in. (12.1 cm)	4.8 in. (12.2 cm)
Depth	4.8 in. (12.2 cm)	4.8 in. (12.2 cm)	5.5 in. (14.0 cm)	5.5 in. (14.0 cm)
Port Size	3/8"-18 NPTF	3/8"-18 NPTF	7/8"-14 UNF	7/8"-14 UNF
Replacement Element and Micron Rating	S3225S - 2 micron S3225T - 10 micron S3225P - 30 micron	S3226S - 2 micron S3226T - 10 micron S3226P - 30 micron	S3238T - 10 micron S3238P - 30 micron	S3207S - 2 micron S3207T - 10 micron S3207P - 30 micron

400 Series

Fuel Filter/Water Separator



Specifications	445R	460R	490R	4120R	4125R
Maximum Flow Rate	45 GPH (170 LPH)	60 GPH (227 LPH)	90 GPH (341 LPH)	120 GPH (454 LPH)	120 GPH (454 LPH)
Height	9.3 in. (23.6 cm)	11.0 in. (27.9 cm)	11.8 in. (30.0 cm)	15.0 in. (38.1 cm)	14.5 in. (36.8 cm)
Weight Dry	2.5 lbs (1.1 kg)	2.7 lbs (1.2 kg)	2.9 lbs (1.3 kg)	3.9 lbs (1.8 kg)	3.9 lbs (1.8 kg)
Width	4.5 in. (11.4 cm)	4.5 in. (11.4 cm)	4.5 in. (11.4 cm)	4.5 in. (11.4 cm)	4.5 in. (11.4 cm)
Depth	4.8 in. (12.1 cm)	4.8 in. (12.1 cm)	4.8 in. (12.1 cm)	4.8 in. (12.1 cm)	4.8 in. (12.1 cm)
Port Size	3/8"-18 NPTF	3/8"-18 NPTF	3/8"-18 NPTF	3/4"-16 SAE	3/4"-16 SAE
Replacement Element and Micron Rating	R45S or R47S -2 micron R45T - 10 micron R45S - 30 micron	R60S - 2 micron R60T - 10 micron R60P - 30 micron	R90S - 2 micron R90T - 10 micron R90P - 30 micron	R120S - 2 micron R120T - 10 micron R120P - 30 micron	R125S - 2 micron R125T - 10 micron R125P - 30 micron

600 Series

Fuel Filter/Water Separator



Specifications	645R	660R	690R	6120R	6125R
Maximum Flow Rate	45 GPH (170 LPH)	60 GPH (227 LPH)	90 GPH (341 LPH)	120 GPH (454 LPH)	120 GPH (454 LPH)
Height	8.5 in. (21.6 cm)	10.2 in. (25.9 cm)	11.2 in. (28.4 cm)	14.1 in. (35.8 cm)	13.9 in. (35.0 cm)
Weight Dry	2.4 lbs (1.09 kg)	2.6 lbs (1.18 kg)	2.7 lbs (1.22 kg)	3.9 lbs (1.8 kg)	3.9 lbs (1.8 kg)
Width	4.5 in. (11.4 cm)	4.5 in. (11.4 cm)	4.5 in. (11.4 cm)	4.5 in. (11.4 cm)	4.6 in. (11.7 cm)
Depth	4.5 in. (11.4 cm)	4.5 in. (11.4 cm)	4.5 in. (11.4 cm)	4.5 in. (11.4 cm)	4.5 in. (11.4 cm)
Port Size	3/8"-18 NPTF	3/8"-18 NPTF	3/8"-18 NPTF	3/8"-18 NPTF	3/8"-18 NPTF
Replacement Element and Micron Rating	R45S - 2 micron R45T - 10 micron R45P - 30 micron	R60S - 2 micron R60T - 10 micron R60P - 30 micron	R90S - 2 micron R90T - 10 micron R90P - 30 micron	R120S - 2 micron R120T - 10 micron R120P - 30 micron	R125S - 2 micron R125T - 10 micron R125P - 30 micron

ParFit™

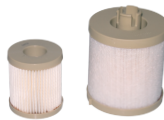
Fuel Filter/Water Separator



Specifications	PF F829B	PFF19528	PFF4595	PFF4596
Maximum Flow Rate	20 GPH (75.7 LPH)	N/A	20 GPH (76 LPH)	20 GPH (76 LPH)
Height	5.5 in. (14 cm)	4.4 in. (11.2 cm)	4.0 in. (10.2 cm)	2.8 in. (7.1 cm)
Weight Dry	1.2 lbs (0.5 kg)	0.4 lb (0.2 kg)	0.4 lb (0.2 kg)	0.3 lbs (0.1 kg)
Max. Working Pressure	30 PSI (2.1 bar)	30 PSI (2.1 bar)	N/A	30 PSI (2.1 bar)
Diameter	4.3 in. (11.0 cm)	3.6 in. (9.1 cm)	3.5 in. (8.9 cm)	3.6 in. (9.1 cm)
Application	Navistar 7.3L Diesel Engines in Ford E & F Series Vehicles	1998 & 199 Dodge Trucks w/Cummins Diesel Engines	7.3L Navistar T44E Powerstroke: 1994-1999	7.3L Navistar T44E Powerstroke: 1999-current
Replacement Element and Micron Rating	PFF829B (2 micron)	PFF19528 (2 micron)	PFF4595 (2 micron)	PFF4596 (7 micron)

ParFit™

Fuel Filter/Water Separator



Specifications	PFF4606	PFF4616	PFF4617	PFF5525
Maximum Flow Rate	N/A	34 GPH (130 LPH)	N/A	N/A
Max. Working Pressure	N/A	58 PSI (4.0 bar)	30 PSI (2.1 bar)	100 PSI (6.9 bar)
Application	Ford 6.0L Powerstroke Engines, Model Years 2003 to 2006	Ford 6.0L Powerstroke Engines, Model Years 2003-2006	F-Series Super Duty Pickups with 6.4L V8 Powerstroke 2008-2010	Hydraulic Spin-On
Micron Rating	4 micron & 10 micron	4 micron & 10 micron	4 micron & 10 micron	25 micron (98% nominal)
Height	1st - 2.5 in. (6.4 cm) 2nd - 3.1 in. (7.9 cm)	1st - 2.6 in. (6.6 cm) 2nd - 4.4 in. (11.2 cm)	1st - 4.8 in. (12.2 cm) 2nd - 4.4 in. (11.2 cm)	8.8 in. (22.4 cm)
Diameter	1st - 2.3 in. (5.8 cm) 2nd - 3.7 in. (9.4 cm)	1st - 2.3 in. (5.8 cm) 2nd - 4.4 in. (11.2 cm)	1st - 3.6 in. (9.1 cm) 2nd - 3.4 in. (8.6 cm)	3.8 in. (9.7 cm)

ParFit™

Fuel Filter/Water Separator



Specifications	PFF5527	PFF5548	PFF558095
Maximum Flow Rate	30 GPH (114 LPH)	50 GPH (189 LPH)	50 GPH (189 LPH)
Max. Working Pressure	40 PSI (2.8 bar)	30 PSI (206 kPa)	30 PSI (2.07 bar)
Application	Ford F550, F650 Trucks	International MaxxForce 9 model year 2007 I-326 engine	Chevrolet Express Van, GMC Savana
Micron Rating	30 micron	2 Micron Aquabloc	10 micron & 2 micron
Height	4.0 in. (10.2 cm)	5.0 in. (12.7 cm)	1st - 3.9 in. (9.9 cm) 2nd - 6.4 in. (16.3 cm)
Diameter	3.6 in. (9.1 cm)	3.2 in. (8.1 cm)	3.7 in. (9.4 cm)

Turbine Series

900FH / 1000FH

The First Name In Fuel Filtration.

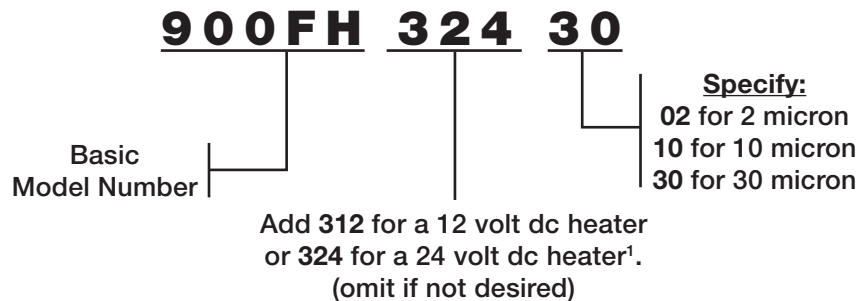
Every engine runs better with a system that cleans fuel, removes water, heats fuel and senses when its time for service. The system is the Racor Turbine Series and it's the most complete reliable high capacity engine protection you can install. A system which will protect your investment in engines and fuel.



Specifications	900FH	1000FH
Maximum Flow Rate	90 GPH (341 LPH)	180 GPH (681 LPH)
Height	17 in. (432 mm)	22 in. (559 mm)
Width	6 in. (152 mm)	6 in. (152 mm)
Depth	7 in. (178 mm)	7 in. (178 mm)
Weight	6 lbs (2.7 kg)	10 lbs (4.5 kg)
Port Size (Standard)	7/8" - 14 UNF	7/8" - 14 UNF
Port Size (Optional)	22 mm x 1.5	22 mm x 1.5
Clean Pressure Drop	0.34 PSI (2.4 kPa)	0.49 PSI (3.4 kPa)
Maximum Operating Pressure	15 PSI (103 kPa)	15 PSI (103 kPa)
Element Number	2040	2020
Element Removal Clearance	5 in. (127 mm)	10 in. (254 mm)

How to Order

(The example below illustrates how part numbers are constructed.)



900FH/1000FH	324	30
---------------------	------------	-----------

Specify 900FH/1000FH for 7/8"-14 UNF ports or 902FH/1002FH for M22 ports

Add 312 for a 12 volt dc heater or 324 for a 24 volt dc heater¹ (omit if not desired)

Specify a micron rating: 2, 10, or 30

¹ 300 watt heater, use with a Racor relay kit - see Accessories.

Absolute Series

Bypass Oil Cleaners



Specifications	ABS10300	ABS10450
Housing Material	Stainless Steel	Stainless Steel
Maximum Pressure	180 PSI (12.4 bar)	180 PSI (12.4 bar)
Capacity	180 PSI (12.4 bar)	180 PSI (12.4 bar)
Port Size (inlet/outlet)	30 qts (28 L)	50 qts (47 L)
Dimensions	W6.38 x D6.54 x H12.48 in. (W162 x D166 x H317 mm)	W8.03 x D8.11 x H12.64 in. (W204 x D206 x H321 mm)
Weight	10 lbs (4.5 kg)	15 lbs (6.8 kg)
Replacement Filters	ABS20330 - 3 micron ABS20370 - 5 micron ABS25350 - 10 micron	ABS20430 - 3 micron ABS20470 - 5 micron ABS25450 - 10 micron
Seal Service Kit	ABS44030	ABS44045

CCV

CCV Filtration Systems



Specifications	CCV4500	CCV6000	CCV8000	CCV1200
Maximum Flow Rate	10 CFM (283 LM)	20 CFM (566 LM)	40 CFM (1133 LM)	50 CFM (1416 LM)
Maximum Engine Rate	400 HP (298 KW)	800 HP (597 KW)	1600 HP (1193 KW)	2000 HP (1491 KW)
Inlet/Outlet Port Size	1 3/16"-12 STOR	1 5/8"- 12 STOR	1 7/8"- 12 STOR	1 7/8"- 12 STOR
Weight	3.3 lbs (1.5 kg)	5.0 lbs (2.3 kg)	8.7 lbs (3.9 kg)	9.3 lbs (4.2 kg)
Low Density Filter Replacement	CCV55248-04	N/A	N/A	N/A
Part Number Bypass Non-bypass	CCV4500-08 CCV4501-08	CCV6000-08 CCV6001-08	CCV8000-08 CCV8001-08	CCV12000-08 CCV12001-08
High Density Filter Replacement (Description)	CCV55248-08	CCV55274-08	CCV55222-08	CCV55222-12-08
Ultra Density Filter Replacement (Description)	CCV55248-10	CCV55274-10	CCV55222-10	CCV55222-12-08
Housing Material	Die cast head, glass filled nylon and black powder epoxy-coated steel bowl	Die cast head, glass filled nylon and black powder epoxy-coated steel bowl	Die cast head, glass filled nylon and black powder epoxy-coated steel bowl	Die cast head, glass filled nylon and black powder epoxy-coated steel bowl
Crankcase Pressure Regulator	Integral	Integral	Integral	Integral
Bypass/Change Indicator	Integral or Remote	Integral or Remote	Integral or Remote	Integral or Remote
Engine Block Check Valve Return Fitting	1/4" NPT	1/4" NPT	3/8" NPT	3/8" NPT
Swivel Fitting (Qty.)	#6 JIC (2pcs.)	#6 JIC (2pcs.)	#8 JIC (2pcs.)	#8 JIC (2pcs.)
Oil Drain Hose I.D.	0.375 in. (0.95 cm)	0.375 in. (0.95 cm)	0.5 in. (1.27 cm)	0.5 in. (1.27 cm)

CCV Inlet/Outlet Hose

Part Number	Corrugated Hose Size (I.D.)
CV1114-01	1 1/4"
CV1112-01	1 1/2"

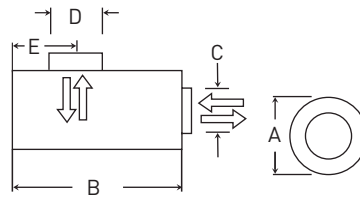
Tap Sleeves

Part Number	Size
CCV40100	4" x 1"

Tap Sleeves are used for in line installations between filter and turbo charger. Match size to fit pipe diameter.

ECOLITE

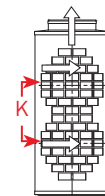
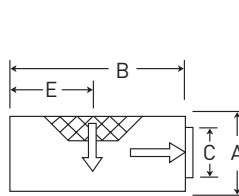
ECO Series Intake Air Filters



Part No.	Dimensions										Air Flow		Weight	
	(Diameter) A		(Length) B		(Outlet) C		(Inlet) D		E		cfm	m ³ /min	lbs	kg
	in.	cm	in.	cm	in.	cm	in.	cm	in.	cm				
062891001	9.8	24.9	24.0	61.0	6.0	15.2	6.0	15.2	5.5	14.0	820-1200	23.2-34.0	16.0	7.3
062891002	11.0	27.9	24.0	61.0	7.0	17.8	7.0	17.8	5.5	14.0	1100-1650	31.1-46.7	19.0	8.6
062891003	13.5	34.3	24.0	61.0	7.0	17.8	7.0	17.8	5.5	14.0	1375-1900	38.9-53.8	27.0	12.2
062891004	13.5	34.3	18.0	45.7	7.0	17.8	7.0	17.8	5.5	14.0	1070-1590	30.3-45.0	16.3	7.4
062891007	9.8	24.9	24.0	61.0	6.0	15.2	6.0	15.2	12.0	30.5	820-1200	23.2-34.0	16.0	7.3
062891010	13.5	34.3	15.0	38.1	7.0	17.8	7.0	17.8	5.5	14.0	1025-1540	29.0-43.6	15.3	6.9
076955000	13.5	34.3	24.4	61.0	8.0	20.3	10.0	25.4	6.5	16.5	1380-2000	39.1-56.6	24.0	10.9
076955001	13.5	34.3	24.4	61.0	8.0	20.3	10.0	25.4	12.0	30.5	1340-1969	37.9-55.8	24.0	10.9
124923000	11.0	27.9	24.0	61.0	7.0	17.8	7.0	17.8	18.5	47.0	860-940	24.4-26.6	19.0	8.6

ECO II

ECO Series Intake Air Filters



Double Grid



Part No.	Dimensions										Air Flow		Weight	
	(Diameter) A		(Length) B		(Outlet) C		(inlet)* D		E		cfm*	m ³ /min*	lbs*	kg*
	in.	cm	in.	cm	in.	cm	in.	cm	in.	cm				
071338001	10.0	25.4	24.0	61.0	6.0	15.2	6.0	15.2	9.0	22.9	820-1220	23.2-34.5	15.5	7.1
071338002	11.0	27.9	24.0	61.0	7.0	17.8	7.0	17.8	9.0	22.9	1200-1700	34.0-48.1	19.2	8.8
071338003	13.5	34.3	24.0	61.0	7.0	17.8	7.0	17.8	9.0	22.9	1370-1950	38.8-55.2	22.0	10.0
071338004	13.5	34.3	18.0	45.7	7.0	17.8	7.0	17.8	9.0	22.9	1350-1800	38.2-51.0	19.9	9.1
071338005	13.5	34.3	15.0	38.1	7.0	17.8	7.0	17.8	7.5	19.1	1350-1800	38.2-51.0	17.0	7.7
071338007	11.0	27.9	24.0	61.0	7.0	17.8	7.0	17.8	11.5	29.2	1200-1700	34.0-48.1	17.5	7.9
071338008	9.8	24.8	18.0	45.7	6.0	15.2	6.0	15.2	9.0	22.9	920-1190	26.1-33.7	12.1	5.5
071338010	10.9	27.7	18.0	45.7	7.0	17.8	7.0	17.8	9.0	22.9	1000-1700	28.3-48.1	17.5	7.9

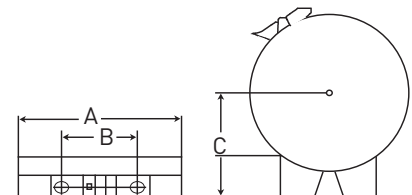
Double Grid

071338009 ¹	13.5	34.3	24.0	61.0	7.0	17.8	7.0	17.8	9.0	22.9	1210-1910	34.3-54.1	9.0	5.5
------------------------	------	------	------	------	-----	------	-----	------	-----	------	-----------	-----------	-----	-----

*With inlet transition mount installed. ¹ K = 8.5 in. (21.6 cm) between grids.

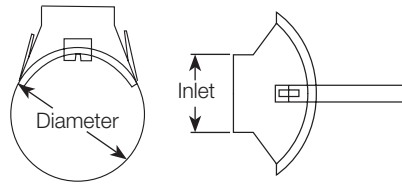
Mounting Clamps (2 Required)

Part No.	Dimensions					
	A		B		C	
	in.	cm	in.	cm	in.	cm
071921001	9.8	24.9	4.5	11.4	5.5	14.0
071921002	11.0	27.9	5.0	12.7	6.1	15.5
071921003	13.5	34.3	6.0	15.2	7.4	18.8



ECO II

Inlet Transition Mounting Adapter

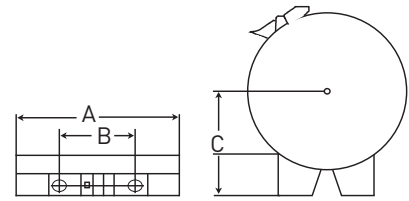


Specifications	Diameter		Inlet	
	in.	cm	in.	cm
073367000	9.8	24.9	6.0	15.2
071656001	11.0	27.9	6.0	15.2
071656002	11.0	27.9	7.0	17.8
072994000	13.5	34.3	7.0	17.8
072995002 ¹	13.5	34.3	7.0	17.8
073086002 ¹	13.5	34.3	7.0	17.8

¹ Transition mount includes a water separator, for horizontal installations.

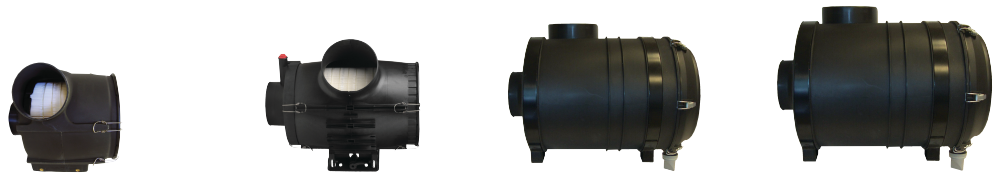
Mounting Clamps (2 Required)

Part No.	Dimensions					
	A		B		C	
	in.	cm	in.	cm	in.	cm
071921001	9.8	24.9	4.5	11.2	5.5	14.0
071921002	11.0	27.9	5.0	12.7	6.1	15.5
071921003	13.5	34.3	6.0	15.2	7.4	18.0



ECO III

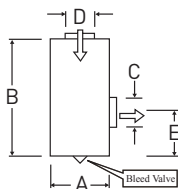
ECO Series Intake Air Filters



Assembly Number: With Safety Filter Without Safety Filter	N/A 500235002	500250012 500251012	ECO-III-XL 13S ECO-III-XL 13	ECO-III-XL15S ECO-III-XL 15
Mounting Clamps	N/A	N/A	071921010 (2 required)	071921009 (2 required)
	ECO III LH	ECO III	ECO III XL13	ECO III XL15
Primary Filter	500293112	500247012	500454001	500375001
Safety Filter	N/A	500233000	500455001	500443001
Diameter	12.3 in. (31.2 cm)	13.0 in. (33.0 cm)	13.0 in. (33.0 cm)	15.0 in. (38.1 cm)
Width	14.1 in. (35.8 cm)	20.5 in. (52.1 cm)	22.0 in. (55.9 cm)	24.0 in. (61.0 cm)
Air Flow	700 CFM (19.8 m ³ /min)	900 CFM (25.5 m ³ /min)	800 CFM (22.7 m ³ /min)	1,000 CFM (28.3 m ³ /min)
Inlet	5.0 in. (12.7 cm)	7.0 in. (17.8 cm)	6.0 in. (15.2 cm)	7.0 in. (17.8 cm)
Outlet	5.0 in. (12.7 cm)	6.0 in. (15.2 cm)	6.0 in. (15.2 cm)	6.0 in. (15.2 cm)

ECO-BC

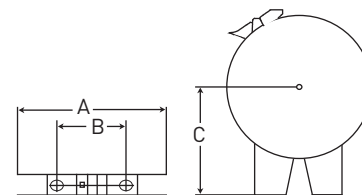
ECO Series Intake Air Filters



Part No.	Dimensions										Air Flow		Weight	
	(Diameter) A		(Length) B		(Outlet) O.D. C		(Inlet) D		E		cfm	m ³ /min	lbs	kg
	in.	cm	in.	cm	in.	cm	in.	cm	in.	cm				
094973001	11.0	27.9	24.0	61.0	7.0	17.8	7.0	17.8	5.5	14.0	1120-1600	31.7-45.3	19.0	8.6
094973002	13.5	34.3	24.0	61.0	7.0	17.8	7.0	17.8	5.5	14.0	1450-1750	41.1-49.6	27.0	12.2
094973003	9.8	24.9	24.0	61.0	6.0	15.2	6.0	15.2	5.5	14.0	875-1250	24.8-35.4	16.0	7.3
094973004	9.8	24.9	18.0	45.7	6.0	15.2	6.0	15.2	9.0	22.9	720-1060	20.4-30.0	10.4	4.7
094973005	13.5	34.3	15.0	38.1	7.0	17.8	7.0	17.8	9.5	24.1	980-1470	27.8-41.6	15.3	6.9
094973006	11.0	27.9	18.0	45.7	7.0	17.8	6.0	15.2	5.5	14.0	810-1200	22.9-34.0	12.6	5.7
094973007	11.0	27.9	18.0	45.7	7.0	17.8	7.0	17.8	5.5	14.0	1010-1490	28.6-42.2	12.5	5.7

Mounting Clamps (2 Required)

Part No.	Dimensions					
	A		B		C	
	in.	cm	in.	cm	in.	cm
071921001	9.8	24.9	4.5	11.4	5.5	14.0
071921002	11.0	27.9	5.0	12.7	6.1	15.5
071921003	13.5	34.3	6.0	15.2	7.4	18.0



ECO-CM (Cowl Mount)

ECO Series Intake Air Filters for Cowl-Mount Installation on Conventional Style Truck Cabs.



Part No.	Description	Filter Diameter		Replacement Filter
		in.	cm	
400460001	CM-102 KW Racor Logo RH*	13.5	34.3	78897001
400460002	CM-102 KW Racor Logo LH*	13.5	34.3	78897001
400462001	CM-104 PB Racor Logo RH	13.5	34.3	78897001
400462002	CM-104 PB Racor Logo LH	13.5	34.3	78897001
400458001	CM-101 PRE 1987 PB Racor Logo RH	13.5	34.3	78897001
400458002	CM-101 PRE 1987 PB Racor Logo LH	13.5	34.3	78897001

* For pre-1981 Kenworth use P/N 093759000 Adapter Bracket for each side.

Replacement Elements

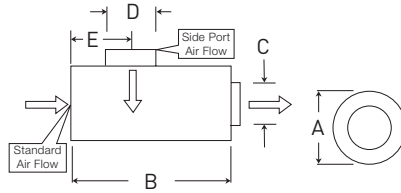
Part No.	Description
078897001	13.5 in. x 24.0 in.
078897002	11.0 in. x 24.0 in.

Cowl Mount Replacement Parts

Part No.	Description	Filter Diameter	
		in.	cm
400461001	CM-102 KW Racor Logo RH Stainless Cover	13.5	34.3
400461002	CM-102 KW Racor Logo LH Stainless Cover	13.5	34.3
400463001	CM-104 & CM-101 PB Racor Logo RH Stainless Cover	13.5	34.3
400463002	CM-104 & CM-101 PB Racor Logo LH Stainless Cover	13.5	34.3
400431000	Air Intake/Rain Cap	13.5	34.3
078950000	Clamping Channel Replacement Kit	13.5/15.0	34.3/38.1

ECO-SE

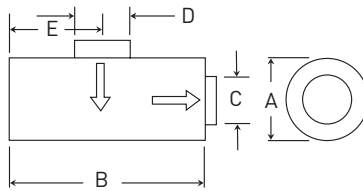
ECO Series Intake Air Filters



Part No.	Dimensions										Air Flow		Weight	
	(Diameter) A		(Length) B		(Outlet) C		(Inlet) D		E		cfm	m ³ /min	lbs	kg
	in.	cm	in.	cm	in.	cm	in.	cm	in.	cm				
ECO-SE Straight-Through														
114500001	6.8	17.3	14.2	36.1	3.0	7.6	N/A	N/A	N/A	N/A	240-340	6.8-9.6	5.0	2.3
114500002	7.8	19.8	17.2	43.7	4.0	10.2	N/A	N/A	N/A	N/A	355-510	10.1-14.4	6.5	2.9
114500003	9.7	24.6	18.9	48.0	5.0	12.7	N/A	N/A	N/A	N/A	610-890	17.3-25.2	7.9	3.6
117122000	11.0	27.9	24.0	61.0	7.0	17.8	N/A	N/A	N/A	N/A	780-1180	22.1-33.4	12.9	5.9
ECO-SE Side Inlet														
114880003	9.7	24.6	19.4	49.3	5.5	14.0	6.0	15.2	4.0	10.2	600-900	17.0-25.5	9.0	4.1
114880005	7.8	19.8	17.2	43.7	4.5	11.4	6.0	15.2	5.5	14.0	420-800	11.9-22.7	7.0	3.2
400292000	11.0	27.9	15.3	38.9	7.0	17.8	6.0	15.2	18.0	45.7	840-1050	23.8-29.7	13.0	5.9

ECO-SM

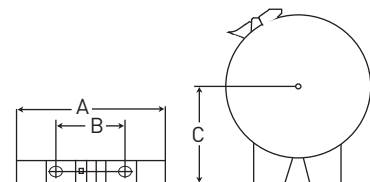
ECO Series Intake Air Filters



Part No.	Dimensions										Air Flow (CFM)		Weight	
	(Diameter) A		(Length) B		(Outlet) C		(Inlet) D		E		cfm	m ³ /min	lbs	kg
	in.	cm	in.	cm	in.	cm	in.	cm	in.	cm				
099842002	11.0	27.9	24.0	61.0	7.0	17.8	7.0	17.8	12.0	30.5	980-1430	27.8-40.5	19.0	8.6
099842004									5.5	14.0	1100-1670	31.1-47.3	27.0	12.2
099842005	13.5	34.3	24.0	61.0	7.0	17.8	7.0	17.8	12.0	30.5	1130-1500	32.0-42.5	27.0	12.2
099842006									18.5	47.0	1030-1500	29.2-42.5	27.0	12.2
099842007	13.5	34.3	18.0	45.7	7.0	17.8	7.0	17.8	5.5	14.0	1120-1630	31.7-46.2	24.0	10.9
099842008									12.5	31.8	1060-1550	30.0-43.9	24.0	10.9
099842009	13.5	34.3	15.0	38.1	7.0	17.8	7.0	17.8	5.5	14.0	1070-1550	30.3-43.9	22.5	10.2
099842010									9.5	24.1	1060-1530	30.0-43.3	22.5	10.2

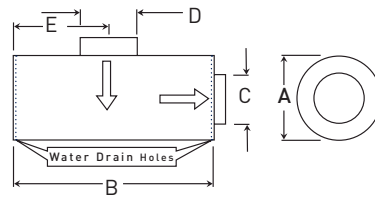
Mounting Clamps (2 Required)

Part No.	Dimensions					
	A		B		C	
	in.	cm	in.	cm	in.	cm
071921001	9.8	24.9	4.5	11.4	5.5	14.0
071921002	11.0	27.9	5.0	12.7	6.1	15.5
071921003	13.5	34.3	6.0	15.2	7.4	18.0
099049001	9.8	24.9	4.5	11.2	6.6	16.8
099049002	11.0	27.9	5.0	12.7	6.1	15.5



ECO-LL

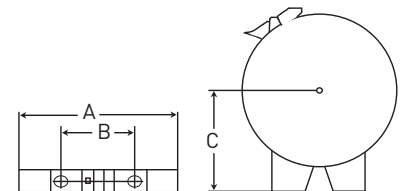
ECO Series Intake Air Filters



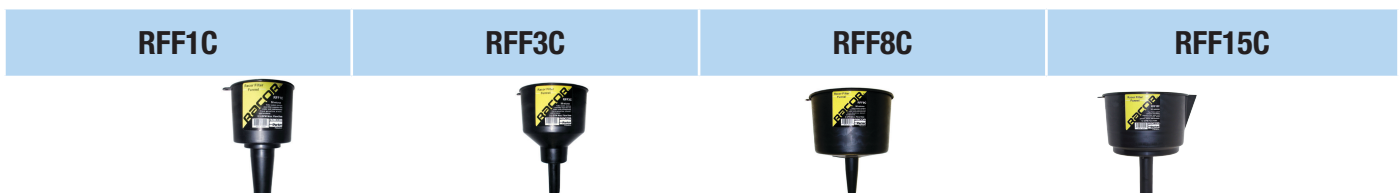
Part No.	Dimensions										Air Flow		Weight		
	(Diameter) A		(Length) B		(Outlet) C		(Inlet) D		E		cfm	m ³ /min	lbs	kg	
	in.	cm	in.	cm	in.	cm	in.	cm	in.	cm					
400820001										5.5	14.0	985-1475	27.9-41.8	19.0	8.6
400820002	11.0	27.9	24.0	61.0	7.0	17.8	7.0	17.8		12.0	30.5	905-1340	25.6-37.9	19.0	8.6
400820003										18.5	47.0	645-950	18.3-26.9	19.0	8.6
400820004										5.5	14.0	1295-1910	36.7-54.1	21.5	9.8
400820005	13.5	34.3	24.0	61.0	7.0	17.8	7.0	17.8		12.0	30.5	1170-1735	33.1-49.1	21.5	9.8
400820006										18.5	47.0	845-1250	23.9-35.4	21.5	9.8
400820007										5.5	14.0	1115-1590	31.6-54.0	17.0	7.7
400820008	13.5	34.3	18.0	45.7	7.0	17.8	7.0	17.8		12.5	31.8	1100-1545	31.1-43.7	17.0	7.7
400820009	13.5	34.3	15.0	38.1	7.0	17.8	7.0	17.8		5.5	14.0	1055-1560	29.9-44.2	15.1	6.8
400820010										9.5	24.1	1135-1690	32.1-47.9	15.1	6.8
400820011										18.5	47.0				
400820012	9.8	24.9	24.0	61.0	6.0	15.2	6.0	15.2		12.0	30.5	820-1215	23.2-34.4	13.1	5.9
400820013										5.5	14.0				
400820014										5.5	14.0	970-1455	27.5-41.2	13.5	6.1
400820015	11.0	27.9	18.0	45.7	7.0	17.8	7.0	17.8		12.5	31.8	715-1075	20.2-30.4	13.5	6.1
400820019	11.0	27.9	13.0	33.0	7.0	17.8	7.0	17.8		7.5	19.1	710-1100	20.1-31.1	10.2	4.6
400820020										7.5	19.1	820-1230	23.2-34.8	11.5	5.2
400820021	11.0	27.9	15.0	38.1	7.0	17.8	7.0	17.8		7.5	19.1	740-1100	21.0-31.1	11.5	5.2
400820022	11.0	27.9	18.0	45.7	6.0	15.2	7.0	17.8		12.5	31.8	650-960	18.4-27.2	12.8	5.8
400820023	11.0	27.9	13.0	33.0	6.0	15.2	7.0	17.8		7.5	19.1	720-1060	20.4-30.0	10.2	4.6

Mounting Clamps (2 Required)

Part No.	Dimensions					
	A		B		C	
	in.	cm	in.	cm	in.	cm
071921001	9.8	24.9	4.5	11.4	5.5	14.0
071921002	11.0	27.9	5.0	12.7	6.1	15.5
071921003	13.5	34.3	6.0	15.2	7.4	18.8
071921006	15.0	38.1	6.0	15.2	8.2	20.8



Filter Funnels



Fuel Filter Funnel - Racor Filter Funnel (RFF) is a heavy duty, fast - flow, filter-in-a-funnel that separates damaging free water and contaminants from gasoline, diesel, heating oil, and kerosene. The RFF family of products is capable of removing free water and solids down to 50 micron and allows you to visually inspect the integrity of your fuel supply as you refuel. The RFF family is manufactured using industrial-grade black electro-conductive polypropylene. Carbon powder is injected into the plastic so that the RFF will conduct static electricity. The grounding capability of the RFF is an important safety feature. Always use proper fuel handling procedures and follow local, state, and federal regulations.

Worldwide Filtration Manufacturing Locations

North America

Compressed Air Treatment

Filtration & Separation/Balston

Haverhill, MA
978 858 0505
www.parker.com/balston

Filtration & Separation/Finite

Oxford, MI
248 628 6400
www.parker.com/finitefilter

Purification, Dehydration & Filtration Division

Lancaster, NY
716 685 4040
www.parker.com/pdf

Sales Office

Charlotte, NC
704 921 9303
www.parker.com/pdf

Engine Filtration & Water Purification

Racor
Modesto, CA
209 521 7860
www.parker.com/racor

Racor

Holly Springs, MS
662 252 2656
www.parker.com/racor

Racor

Beaufort, SC
843 846 3200
www.parker.com/racor

Racor – Village Marine Tec.

Gardena, CA
310 516 9911
desalination.parker.com

Hydraulic Filtration

Hydraulic Filter
Metamora, OH
419 644 4311
www.parker.com/hydraulicfilter

Process Filtration

Process Advanced Filtration
Oxnard, CA
805 604 3400
www.parker.com/processfiltration

Europe

Compressed Air Treatment

domnick hunter Industrial

England NE
+44 (0) 191 402 9000,
www.domnickhunter.com

Hiross Zander

Padova Business Unit
Angelo di Piove Padova, Italy
+39 049 9712 111
www.parker.com/hzde

Hiross Zander

Essen Business Unit
Essen, Germany
T +49 2054 9340, F +49 2054 934164
www.parker.com/hzde

Parker Gas Separations

Etten- Leur, Netherlands
+31 76 508 5300

Engine Filtration & Water Purification

Racor
England
+44 (0) 1924 487000,
www.parker.com/rfde

Racor Research & Development

Stuttgart Germany
+49 (0)711 7071 290-0
www.parker.com/racor

Hydraulic Filtration

Hydraulic Filter
Arnhem, Holland
+31 26 3760376
www.parker.com/eurofilt

Urjala Operation

Urjala as Finland
+358 20 753 2500
www.parker.com/urjala

Condition Monitoring Center

Norfolk IP 24 1HP England
+44 1842 763299
www.parker.com/cmc

Process Filtration

domnick hunter Process
DH3 2SF England
T +44 (0) 191 410 5121
www.domnickhunter.com

Asia Pacific

Australia

NSW 2154, Australia
+61 2 9634 777
www.parker.com/australia

China

Shanghai 101206 China
+86 21 5031 2525
www.parker.com/china

India

Mahape, Navi Mumbai 400 709 India
T +91 22 5613 7081, 82, 83, 84, 85
www.parker.com/india

Japan

Yokohama-shi, 244-0003 Japan
T +81 45 870 1522
www.parker.com/japan

Korea

Hwaseong-City Gyeonggi-Do, Korea
T +82 31 359 0771
www.parker.com/korea

Singapore

Singapore 619 702
T +65 6887 6300
www.parker.com/singapore

Thailand

Bangkok 10250 Thailand
T +66 (0)2 186 7024
www.parker.com/thailand

Latin America

Parker Comercio Ltda.

Filtration Division
Sao Jose dos Campos
CEP 12225-390 SP Brazil
+55 12 4009 3500
www.parker.com/br

Pan American Division - Miami

Miami, FL
305 470 8800
www.parker.com/panam

Africa

Aeroporto Kempton Park,
1620 South Africa
+27 11 9610700
www.parker.com/ea



Parker Hannifin Corporation
**Filtration Group Global
Headquarters**

6035 Parkland Boulevard
Cleveland, OH 44124-4141
phone 216 896 3000
fax 216 896 4021
www.parker.com/racor