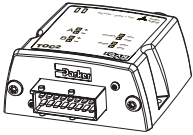


Installation IQAN-TOC2

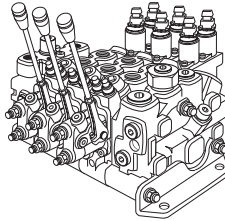
Publ.no: M5010028A

Ed. A

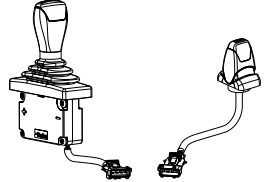
IQAN-TOC2



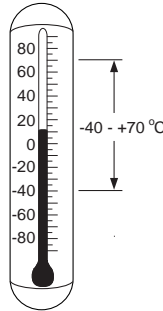
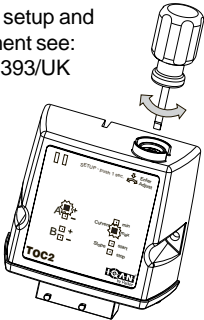
valves



levers, switches



Tuning instructions for manual setup and adjustment see: HY17-8393/UK



Always replace plug!

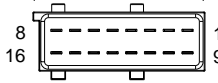
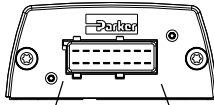


CE
(89/336/EEC)

For further information see:
HY17-8393/UK Instructions IQAN-TOC2

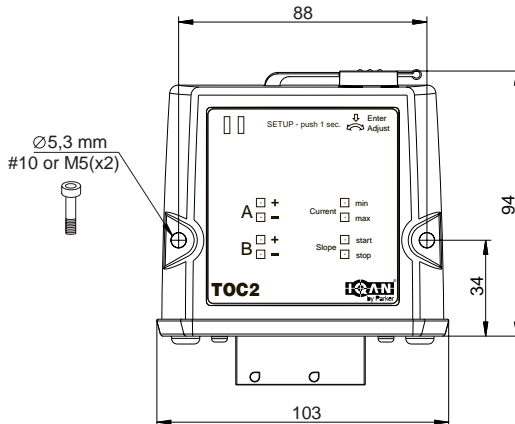
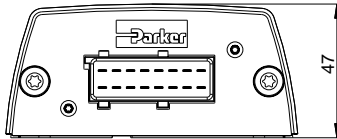


Wiring diagram



1	+BAT(+12V, +24V)	9	-BAT
2	CRET-A+	10	CRET-B+
3	CRET-A-	11	CRET-B-
4	COUT-A	12	COUT-B
5	DATA-OUT	13	DATA-IN
6	DIN-A	14	DIN-B
7	+VREF	15	-VREF
8	VIN-A	16	VIN-B

Mating connector kit: 5031 105



unit = mm