

## Objective

To provide instructions on how to convert the Parker's TS8000 HMI touchscreens, DSI8000 and DSI3 software configuration files, to work with Red Lion Controls, Crimson® 3.1 software and the series CR3000 HMIs.

For converting Parker's DSI8000 configuration files to work with Crimson® 3.1, see page 4

## [Converting Parker's DSI3 configuration files to operate with Crimson® 3.1](#)

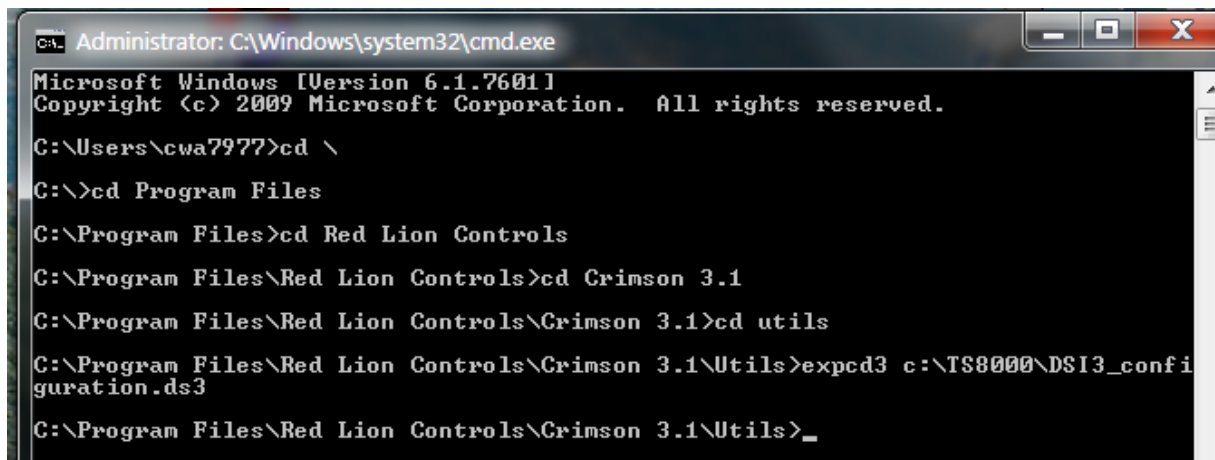
### Equipment

'Red Lion Controls' Crimson® 3.1 HMI software, installed on a pc.

### Procedure for converting Parker's DSI3 configuration files to operate with Crimson® 3.1

1. Download and install the 'Red Lion Controls' Crimson® 3.1 HMI software on a computer. The software can be located at <https://www.redlion.net/red-lion-software/crimson/crimson-31>
2. On the computer go to the *Start* menu (located in the lower left-hand corner of the screen) and type in *CMD*. A DOS window will appear as shown in Figure 1.
3. We need to navigate to the *utils* directory of the *Crimson* folder and we need to run the *expcd3* utility. At the prompt type in *cd \*
4. Then type in *cd Program files*
5. Then type *cd Red Lion Controls*
6. Then type *cd Crimson 3.1*
7. Then type *cd utils*
8. Now you need to run the *expcd3* utility which will decompress and expand the TS8000 file.

Type *expcd3* and the path name and file name including the extension of the TS8000 file that you are converting. It may look something like this *expcd3 c:\TS8000\DSI3configuration.ds3*  
In this example the file is in the folder *TS8000* and the file name is *DSI3\_configuration.ds3*  
See Figure 1 below.



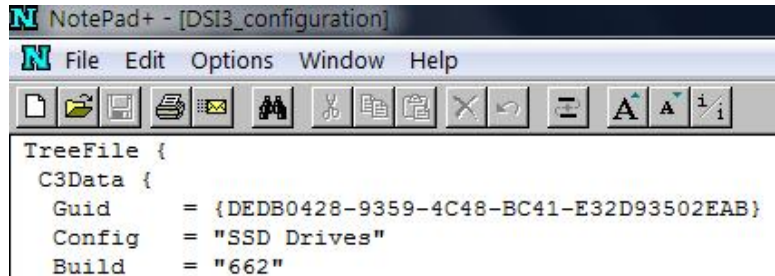
```
Administrator: C:\Windows\system32\cmd.exe
Microsoft Windows [Version 6.1.7601]
Copyright (c) 2009 Microsoft Corporation. All rights reserved.

C:\Users\cwa7977>cd \
C:\>cd Program Files
C:\Program Files>cd Red Lion Controls
C:\Program Files\Red Lion Controls>cd Crimson 3.1
C:\Program Files\Red Lion Controls\Crimson 3.1>cd utils
C:\Program Files\Red Lion Controls\Crimson 3.1\Utils>expcd3 c:\TS8000\DSI3_configuration.ds3
C:\Program Files\Red Lion Controls\Crimson 3.1\Utils>_
```

**Figure 1.**

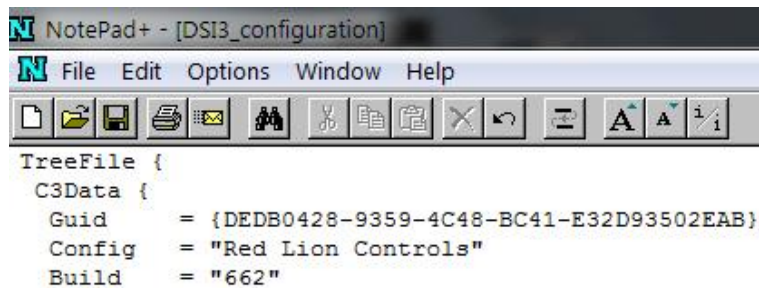
If you have questions, please call the Product Support Group at (704) 588-3246.

9. Once the TS8000 file has been expanded, the file name will go away as shown in the last line of Figure 1.
10. Now change the file extension name from **ds3** to **txt**.
11. Click on the file to open it with a text editor.
12. On the 4<sup>th</sup> line down, where it says **Config**, change the name from “**SSD Drives**” to “**Red Lion Controls**”. It is case sensitive. When finished it should look like Figure 3.



```
NotePad+ - [DSI3_configuration]
File Edit Options Window Help
TreeFile {
  C3Data {
    Guid      = {DEDB0428-9359-4C48-BC41-E32D93502EAB}
    Config    = "SSD Drives"
    Build     = "662"
```

**Figure 2**



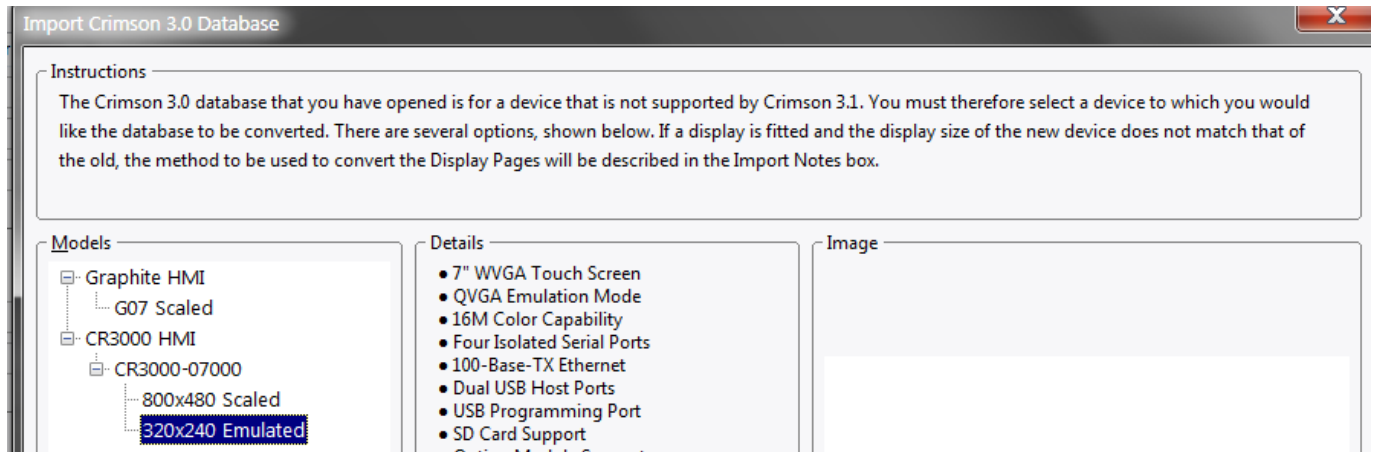
```
NotePad+ - [DSI3_configuration]
File Edit Options Window Help
TreeFile {
  C3Data {
    Guid      = {DEDB0428-9359-4C48-BC41-E32D93502EAB}
    Config    = "Red Lion Controls"
    Build     = "662"
```

**Figure 3**

13. Click *File / Save As* and change the file extension from **txt** to **cd3**
14. Launch Crimson® 3.1 and select *File / Import* and select your **cd3** file and then select *Open*.

If you have questions, please call the Product Support Group at (704) 588-3246.

15. A window will appear stating Crimson 3.0® is not supported in Crimson® 3.1



**Figure 4**

16. Select the *Model* of HMI being used and press *OK*. There may be several options available

If the target device's display resolution does not match that of the original device, you may be offered several options relating to how display pages will be converted. Options labeled as *Scaled* take each display page and resize its contents to the new display format, adjusting font sizes where possible. Options labeled as *Centered* leave the display page contents unchanged but center them within the new display size, leaving either vertical bars or a frame around them. Options labeled as *Emulated* switch the target device's display into a mode where it scales its display output to emulate the original device's resolution. Where the scaling is by an integral factor, this will typically produce a clear display but with larger and thus more noticeable pixels. Where a non-integral factor is used, you should assess the results to see if you consider the resulting display quality to be acceptable.

17. Then select *File / Save As* and name your configuration with the extension **cd31**, which will repress the file which Crimson® 3.1 supports.

If you have questions, please call the Product Support Group at (704) 588-3246.

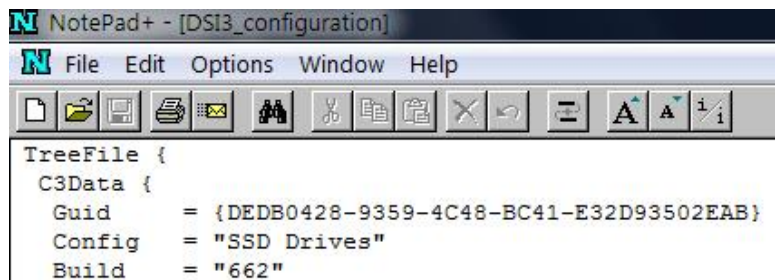
## Converting Parker's DSI8000 configuration files to operate with Crimson® 3.1

### Equipment

'Red Lion Controls' Crimson® 2.0, Crimson® 3.0 and Crimson® 3.1 HMI software, installed on a pc.

### Procedure for converting Parker's DSI8000 configuration files to work with Crimson® 3.1

18. Download and install the 'Red Lion Controls' Crimson® 2.0 HMI software on a computer. The software can be located at <https://www.redlion.net/red-lion-software/crimson/crimson-20>
19. Download and install the 'Red Lion Controls' Crimson® 3.0 HMI software on a computer. The software can be located at <https://www.redlion.net/red-lion-software/crimson/crimson-30>
20. Download and install the 'Red Lion Controls' Crimson® 3.1 HMI software on a computer. The software can be located at <https://www.redlion.net/red-lion-software/crimson/crimson-31>
21. On the DSI8000 `dsi` file that you want to convert, change the file extension name from `dsi` to `txt`.
22. Click on the file to open it with a text editor.
23. On the 4<sup>th</sup> line down, where it says `Config`, change the name from "SSD Drives" to "Red Lion Controls". It is case sensitive. When finished it should look like Figure 6.

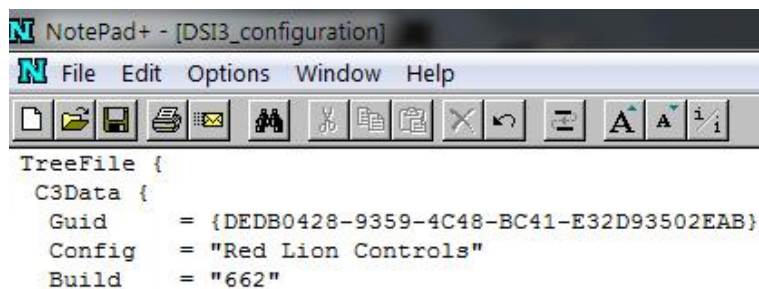


```

NotePad+ - [DSI3_configuration]
File Edit Options Window Help
TreeFile {
  C3Data {
    Guid      = {DEDB0428-9359-4C48-BC41-E32D93502EAB}
    Config    = "SSD Drives"
    Build     = "662"
  }
}

```

**Figure 5**



```

NotePad+ - [DSI3_configuration]
File Edit Options Window Help
TreeFile {
  C3Data {
    Guid      = {DEDB0428-9359-4C48-BC41-E32D93502EAB}
    Config    = "Red Lion Controls"
    Build     = "662"
  }
}

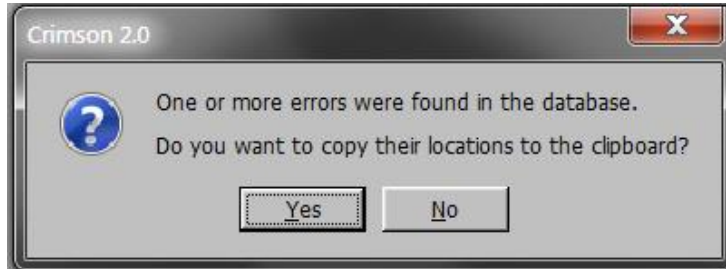
```

**Figure 6**

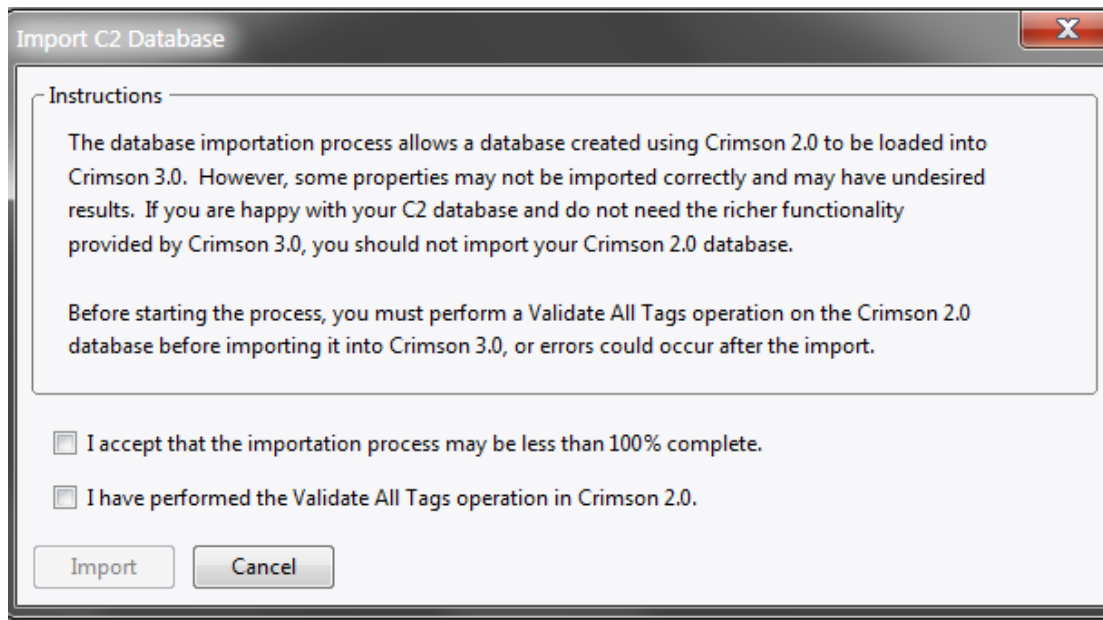
24. Click *File / Save As* and change the file extension from `txt` to `cd2`.
25. Launch Crimson ® 2.0 and select *File / Open*. Select the `cd2` file.
26. Double mouse click on the *Data Tags* icon.

If you have questions, please call the Product Support Group at (704) 588-3246.

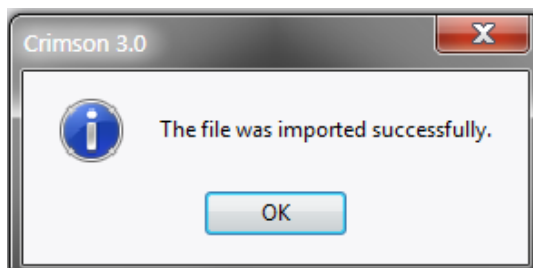
27. In the *Utilities* menu, click on the *Validate All Tags*. If an error message appears as shown below, there are errors in the template. They can be copied to the clipboard to be viewed. If the errors are ignored, the configuration may install into the new hardware, but there will be errors on the display and the graphics may not display properly.



28. Launch Crimson® 3.0 and select *File / Import* and select your *cd2* file and then select *Open*.  
29. A window will appear as shown below. You must check the 2 boxes and then click *Import*.



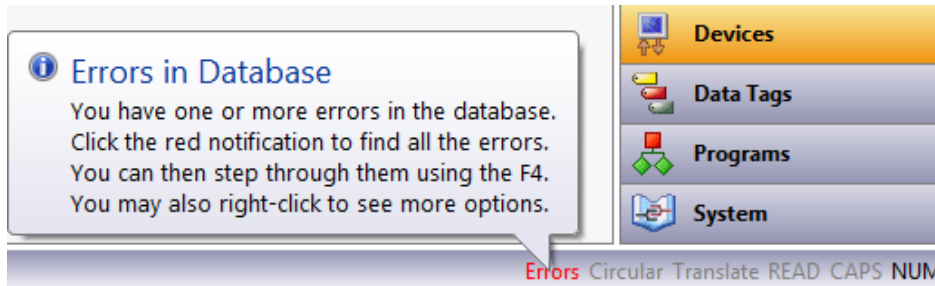
30. A window will appear as shown below. Click *OK*.



If you have questions, please call the Product Support Group at (704) 588-3246.



31. Check to see if a window appears in the lower right hand corner stating that there are *Errors in Database*.

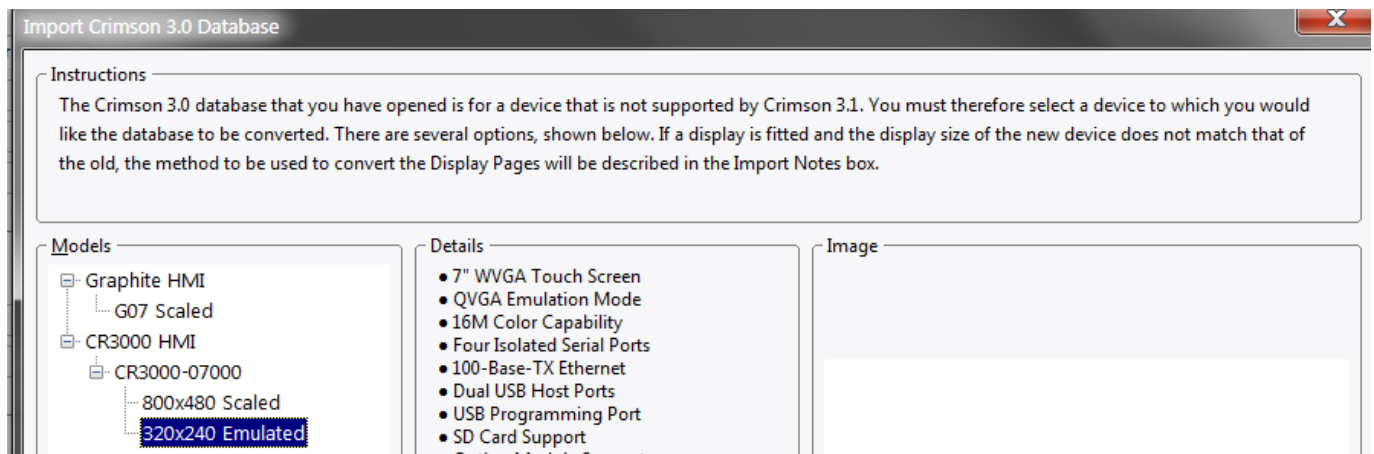


32. You can click on the **Errors** window to see what the errors are.

33. Do a File / Save As, naming the file something with a **cd3** extension.

34. Launch Crimson® 3.1 and select *File / Import* and select your **cd3** file and then select *Open*.

35. A window will appear stating Crimson 3.0 is not supported in Crimson® 3.1

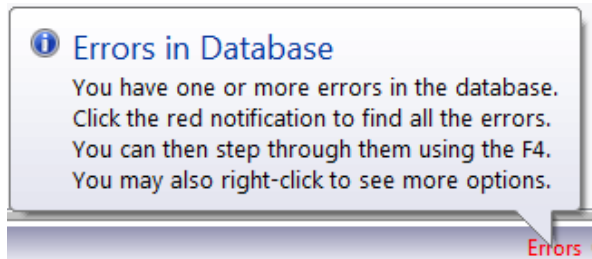


36. Select you *Model* of HMI being used and press *OK*. There may be several options available

If the target device's display resolution does not match that of the original device, you may be offered several options relating to how display pages will be converted. Options labeled as *Scaled* take each display page and resize its contents to the new display format, adjusting font sizes where possible. Options labeled as *Centered* leave the display page contents unchanged but center them within the new display size, leaving either vertical bars or a frame around them. Options labeled as *Emulated* switch the target device's display into a mode where it scales its display output to emulate the original device's resolution. Where the scaling is by an integral factor, this will typically produce a clear display but with larger and thus more noticeable pixels. Where a non-integral factor is used, you should assess the results to see if you consider the resulting display quality to be acceptable.

If you have questions, please call the Product Support Group at (704) 588-3246.

37. Check to see if a window appears in the lower right-hand corner stating that there are *Errors in Database*.



38. You can click on the  window to see what the errors are.

39. Then select *File / Save As* and name your configuration with the extension **cd31**, which will work with Crimson® 3.1.

If you have questions, please call the Product Support Group at (704) 588-3246.