

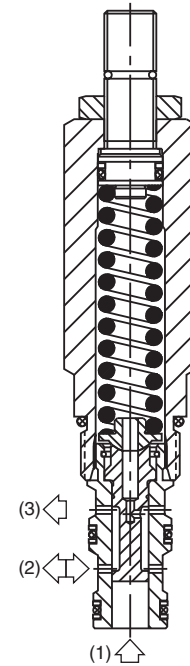
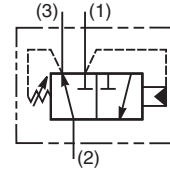
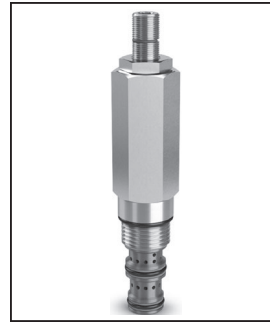
- CV Check Valves
- SH Shuttle Valves
- LM Load/Motor Controls
- FC Flow Controls
- PC Pressure Controls**
- LE Logic Elements
- DC Directional Controls
- SV Solenoid Valves
- PV Proportional Valves
- CE Coils & Electronics
- BC Bodies & Cavities
- TD Technical Data

General Description

Direct Acting Sequence Valve with Internal Pilot and Drain. For additional information see Technical Tips on pages PC1-PC4.

Features

- Hardened working parts for maximum durability
- All external parts zinc plated
- Adjustable and tamperproof versions available



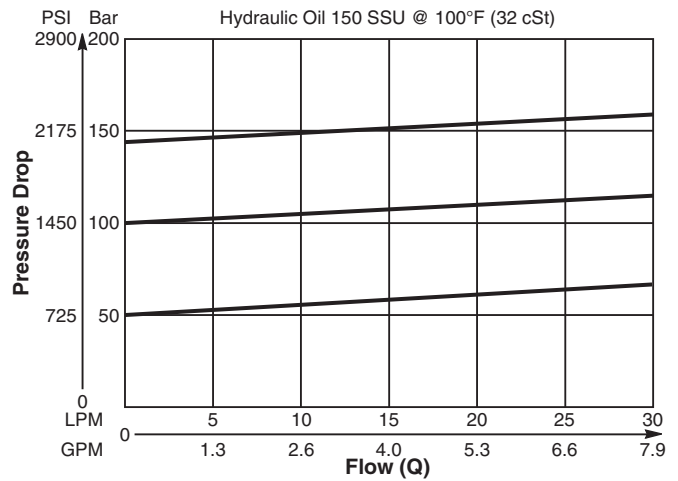
Specifications

Rated Flow	30 LPM (8 GPM)
Maximum Inlet Pressure	420 Bar (6000 PSI)
Maximum Pressure Setting	2-148 Bar (30-2150 PSI)
Sensitivity: Pressure/Turn	F - 22 Bar (318 PSI)
Maximum Tank Pressure	420 Bar (6000 PSI)
Leakage at 150 SSU (32 cSt)	25 ml/min. @ 35 Bar (580 PSI)
Cartridge Material	All parts steel. All operating parts hardened steel.
Fluid Compatibility/Viscosity	Mineral-based or synthetic with lubricating properties at viscosities of 45 to 2000 SSU (6 to 420 cSt)
Filtration	ISO-4406 18/16/13, SAE Class 4
Approx. Weight	0.21 kg (0.46 lbs.)
Cavity	C08-3 (See BC Section for more details)
Form Tool	Rougher NFT08-3R Finisher NFT08-3F

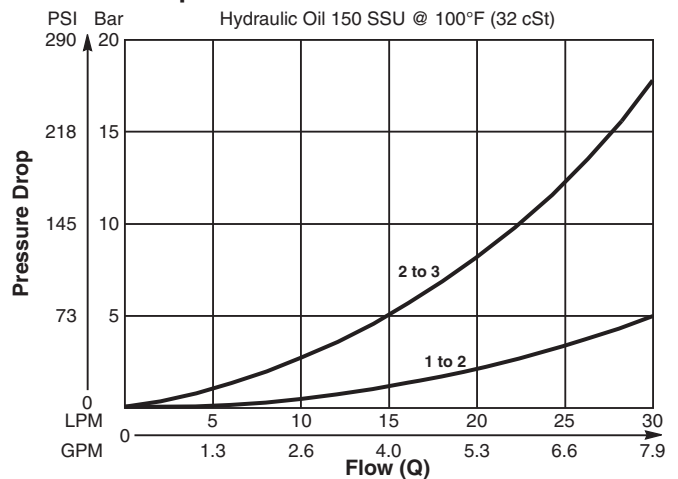
Performance Curves

(Pressure rise through cartridge only)

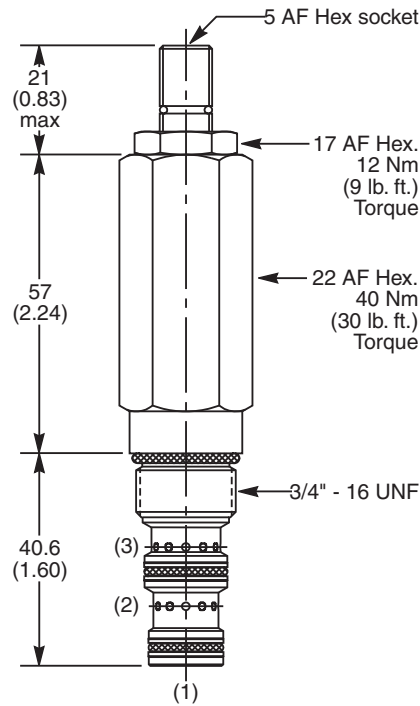
Flow vs. Inlet Pressure 1 to 2



Pressure Drop vs. Flow



Dimensions Millimeters (Inches)



Ordering Information

B02E3	F	Z	N
08 Size D.A. Sequence Valve (Int. Pilot & Drain)	Pressure Adjustment Range	Adjustment Style	Seals

Code	Pressure Adjustment Range
F	2 - 148 Bar (30 - 2150 PSI)

Standard Pressure Setting
B02E3F Standard Setting: 75 Bar (1100 PSI) @ 5 LPM (1.3 GPM)

*Order Bodies Separately
See section BC*

B08	—	3	—	6B
08 Size		3-Way Cavity		Port Size

Code	Adjustment Style
Z	Screw Adjust

*Valves are supplied at Standard setting.
Other settings are available, please
contact Parker Sales.*

Port Size
3/8" BSP

Body Material
Steel

Code	Seals / Kit No.	Operating Temp.
N	Nitrile, Buna-N / (SK30501N-1)	-34°C to +121°C (-30°F to +250°F)

- CV
- Check Valves
- SH
- Shuttle Valves
- LM
- Load/Motor Controls
- FC
- Flow Controls
- PC
- Pressure Controls
- LE
- Logic Elements
- DC
- Directional Controls
- SV
- Solenoid Valves
- PV
- Proportional Valves
- CE
- Coils & Electronics
- BC
- Bodies & Cavities
- TD
- Technical Data