

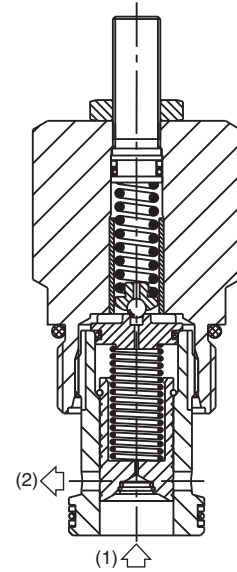
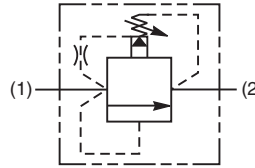
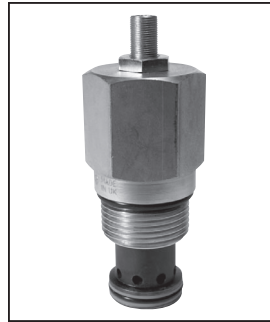
**CV** Check Valves  
**SH** Shuttle Valves  
**LM** Load/Motor Controls  
**FC** Flow Controls  
**PC** Pressure Controls  
**LE** Logic Elements  
**DC** Directional Controls  
**SV** Solenoid Valves  
**PV** Proportional Valves  
**CE** Coils & Electronics  
**BC** Bodies & Cavities  
**TD** Technical Data

**General Description**

Pilot Operated, Spool-Type Relief Valve. For additional information see Technical Tips on pages PC1-PC4.

**Features**

- Very high flow capacity
- Minimal pressure variation with flow change
- Full tank line back pressure capability, ideal for crossline relief applications
- Integral 250 micron pilot flow filter
- Hardened working parts for maximum durability
- Adjustable and tamperproof versions available
- All external parts zinc plated



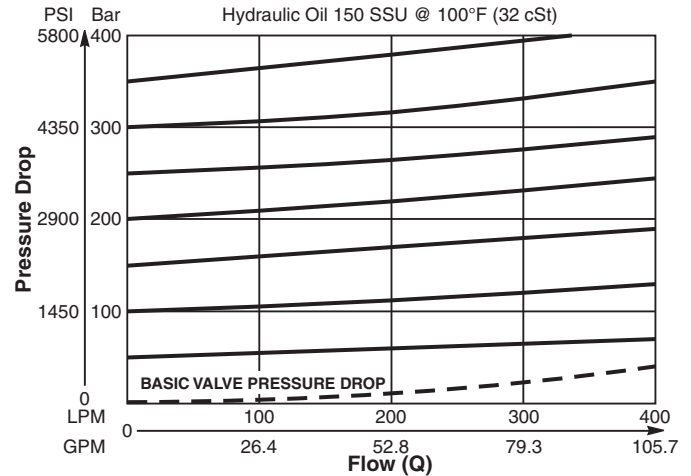
**Specifications**

<b>Rated Flow</b>	400 LPM (106 GPM)
<b>Maximum Inlet Pressure</b>	<b>H</b> - 10-210 Bar (145-3000 PSI) <b>P</b> - 10-420 Bar (145-6000 PSI)
<b>Maximum Pressure Setting</b>	420 Bar (6000 PSI)
<b>Sensitivity: Pressure/Turn</b>	<b>H</b> 30 Bar (435 PSI) <b>P</b> 55 Bar (800 PSI)
<b>Maximum Tank Pressure</b>	420 Bar (6000 PSI)
<b>Leakage at 150 SSU (32 cSt)</b>	100 ml/min. @ 100 Bar (1450 PSI)
<b>Cartridge Material</b>	All parts steel. All operating parts hardened steel.
<b>Fluid Compatibility/ Viscosity</b>	Mineral-based or synthetic with lubricating properties at viscosities of 45 to 2000 SSU (6 to 420 cSt)
<b>Filtration</b>	ISO-4406 18/16/13, SAE Class 4
<b>Approx. Weight</b>	0.57 kg (1.26 lbs.)
<b>Cavity</b>	C16-2 (See BC Section for more details)
<b>Form Tool</b>	Rougher None Finisher NFT16-2F

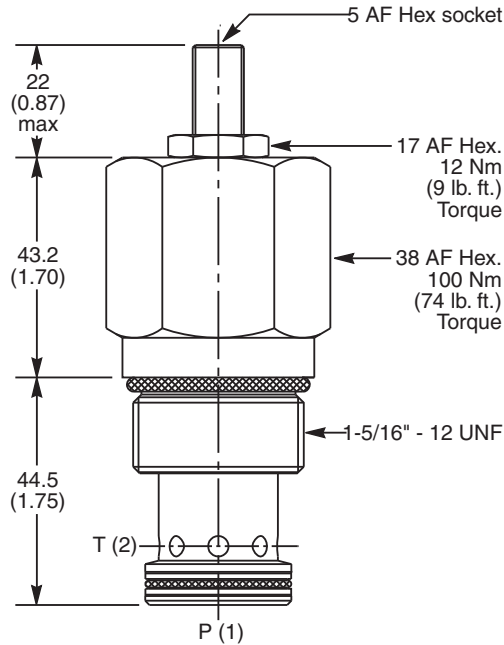
**Performance Curve**

(Pressure rise through cartridge only)

**Flow vs. Inlet Pressure**



**Dimensions** Millimeters (Inches)



**Ordering Information**

<b>A06G2</b>		<b>Z</b>	<b>N</b>
16 Size Pilot Operated Relief Valve	Pressure Adjustment Range	Adjustment Style	Seals

Code	Pressure Adjustment Range
H	10 - 210 Bar (145 - 3000 PSI)
P	10 - 420 Bar (145 - 6000 PSI)

Code	Adjustment Style
Z	Screw Adjust

Code	Seals / Kit No.
N	Nitrile, Buna-N / (SK30507N-1)

Standard Pressure Setting
<b>A06G2H</b> Standard Setting: 100 Bar (1450 PSI) @ 15 LPM (4.0 GPM)
<b>A06G2P</b> Standard Setting: 200 Bar (2900 PSI) @ 15 LPM (4.0 GPM)

*Valves are supplied at Standard setting. Other settings are available, please contact Parker Sales.*

*Order Bodies Separately See section BC*

<b>B16</b>	—	<b>2</b>	—	<b>16B</b>
16 Size		2-Way Cavity		Port Size
<b>Port Size</b>		<b>Body Material</b>		
1" BSP		Steel		

- CV
- Check Valves
- SH
- Shuttle Valves
- LM
- Load/Motor Controls
- FC
- Flow Controls
- PC
- Pressure Controls
- LE
- Logic Elements
- DC
- Directional Controls
- SV
- Solenoid Valves
- PV
- Proportional Valves
- CE
- Coils & Electronics
- BC
- Bodies & Cavities
- TD
- Technical Data