

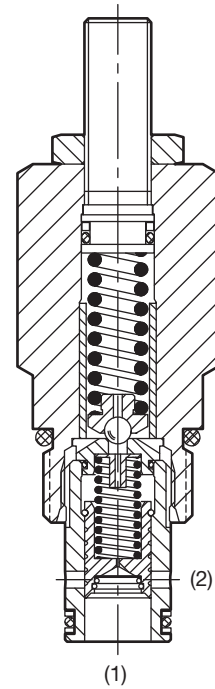
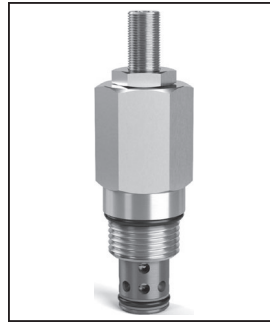
- CV
Check Valves
- SH
Shuttle Valves
- LM
Load/Motor Controls
- FC
Flow Controls
- PC
Pressure Controls
- LE
Logic Elements
- DC
Directional Controls
- SV
Solenoid Valves
- PV
Proportional Valves
- CE
Coils & Electronics
- BC
Bodies & Cavities
- TD
Technical Data

General Description

Pilot Operated Spool-Type Relief Valve.
 For additional information see
 Technical Tips on pages PC1-PC4.

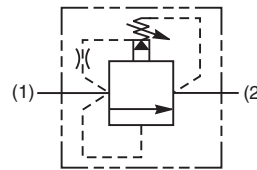
Features

- Hardened, precision ground parts for durability
- Low profile adapter for minimal space requirements
- Fully guided pilot for more consistent reset
- Steel adapters are zinc plated
- Internal screening protects pilot spring from debris



Specifications

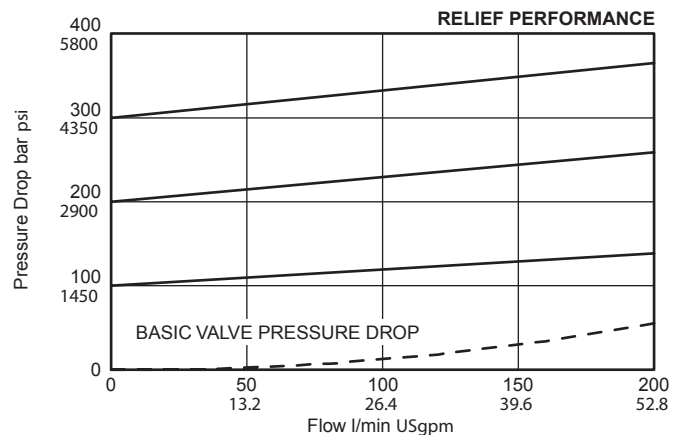
Rated Flow	200 LPM (53 GPM)
Maximum Inlet Pressure	420 Bar (6000 PSI)
Maximum Pressure Setting	420 Bar (6000 PSI)
Sensitivity: Pressure/Turn	H - 30 Bar (435 PSI) P - 55 Bar (800 PSI)
Maximum Tank Pressure	420 Bar (6000 PSI)
Cartridge Material	All parts steel. All operating parts hardened steel.
Fluid Compatibility/Viscosity	Mineral-based or synthetic with lubricating properties at viscosities of 45 to 2000 SSU (6 to 420 cSt)
Filtration	ISO-4406 18/16/13, SAE Class 4
Approx. Weight	.21 kg (.46 lbs.)
Cavity	C10-2 (See BC Section for more details)
Form Tool	Rougher None Finisher NFT10-2F



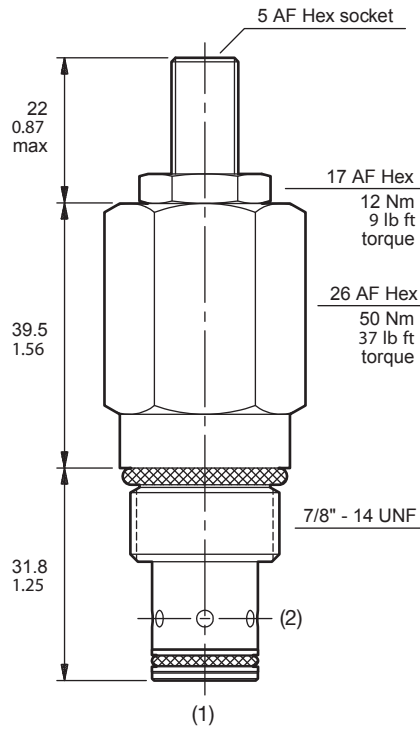
Performance Curves

Flow vs. Inlet Pressure

(Pressure rise through cartridge only)



Dimensions Millimeters (Inches)



Ordering Information

A04G2		Z	N
10 Size Pilot Operated Relief Valve	Pressure Range	Adjustment Style	Seals

Code	Pressure Adjustment Range
H	10 - 210 Bar (145 - 3000 PSI)
P	10 - 420 Bar (145 - 6000 PSI)

Code	Adjustment Style
Z	Screw Adjust

Code	Seals / Kit No.	Operating Temp.
N	Nitrile, Buna-N / (SK30503N-1)	-34°C to +121°C (-30°F to +250°F)

Standard Pressure Setting
A04G2H Standard Setting: 100 Bar (1450 PSI) @ 15 LPM (4 GPM)
A04G2P Standard Setting: 200 Bar (2900 PSI) @ 15 LPM (4 GPM)

Valves are supplied at Standard setting. Other settings are available, please contact Parker Sales.

*Order Bodies Separately
See section BC*

LB10	707	S
Line Body	Porting	Body Material

Code	Porting
707	1/2" BSP

Code	Body Material
S	Steel

- CV
- Check Valves
- SH
- Shuttle Valves
- LM
- Load/Motor Controls
- FC
- Flow Controls
- PC
- Pressure Controls
- LE
- Logic Elements
- DC
- Directional Controls
- SV
- Solenoid Valves
- PV
- Proportional Valves
- CE
- Coils & Electronics
- BC
- Bodies & Cavities
- TD
- Technical Data