

CV  
Check Valves  
SH  
Shuttle Valves  
LM  
Load/Motor Controls  
FC  
Flow Controls  
PC  
Pressure Controls  
LE  
Logic Elements  
DC  
Directional Controls  
SV  
Solenoid Valves  
PV  
Proportional Valves  
CE  
Coils & Electronics  
BC  
Bodies & Cavities  
TD  
Technical Data

**General Description**

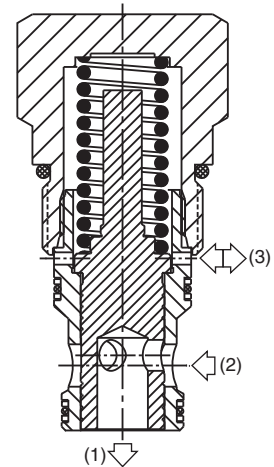
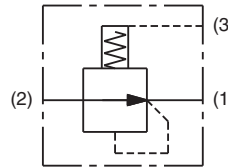
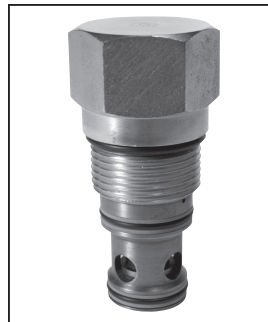
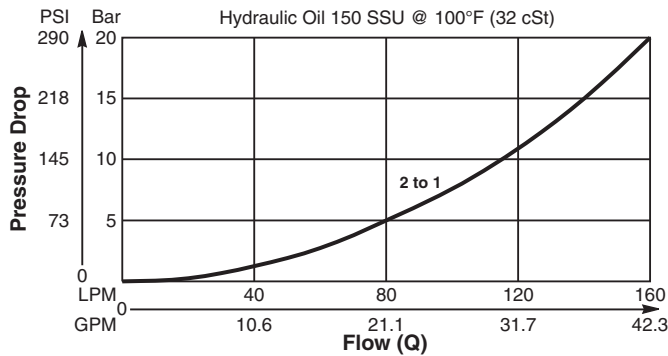
Spool Type , Normally Open, Vent to Close Logic Element. For additional information see Technical Tips on pages LE1-LE6.

**Features**

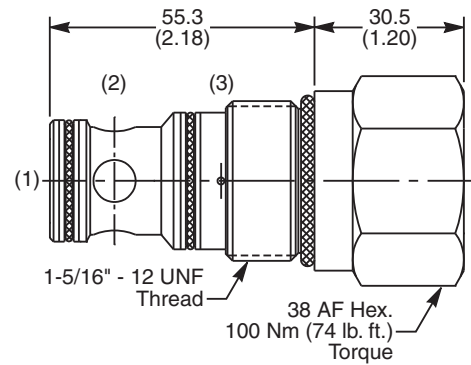
- High flow capacity
- Used as high flow switching or metering element
- Can be used for inline pressure compensated flow control when used with restrictor (refer to application)
- More stable than poppet type
- Range of spring ratings available
- Integral 250 micron pilot flow filter
- 1:1 pilot ratio
- Hardened working parts for maximum durability
- All external parts zinc plated

**Performance Curve**

**Pressure Drop vs. Flow (Through cartridge only)**



**Dimensions** Millimeters (Inches)



**Specifications**

<b>Rated Flow</b>	160 LPM (42 GPM)
<b>Nominal Flow @ 7 Bar (100 PSI)</b>	90 LPM (24 GPM)
<b>Maximum Inlet Pressure</b>	420 Bar (6000 PSI)
<b>Leakage @ 150 SSU (32 cst)</b>	125 ml/min. @ 100 Bar (1450 PSI)
<b>Switching Press.</b>	See ordering information
<b>Cartridge Material</b>	All parts steel. All operating parts hardened steel.
<b>Fluid Compatibility/ Viscosity</b>	Mineral-based or synthetic with lubricating properties at viscosities of 45 to 2000 SSU (6 to 420 cSt)
<b>Filtration</b>	ISO-4406 18/16/13, SAE Class 4
<b>Approx. Weight</b>	.37 kg (.82 lbs.)
<b>Cavity</b>	C16-3S (See BC Section for more details)
<b>Form Tool</b>	Rougher NFT16-3SR Finisher NFT16-3SF

**Ordering Information**

**R06H3** — **N**  
 16 Size Logic Element      Switching Pressure      Seals

Code	Switching Pressure Non Adjustable Preset
5.5	5.5 Bar (80 PSI) Std.
10.0	10.0 Bar (145 PSI)
15.0	15.0 Bar (218 PSI)

*If no switching pressure is specified, valve will be supplied as R06H3-5.5N*

*Order Bodies Separately See section BC*

**LB10**    **726**    **S**  
 Line Body    Porting    Body Material

Code	Porting
726	1" BSP

Code	Body Material
S	Steel

Code	Seals / Kit No.	Operating Temp.
N	Nitrile, Buna-N / (SK30508N-1)	-34°C to +121°C (-30°F to +250°F)

