

CV
Check Valves
SH
Shuttle Valves
LM
Load/Motor Controls
FC
Flow Controls
PC
Pressure Controls
LE
Logic Elements
DC
Directional Controls
SV
Solenoid Valves
PV
Proportional Valves
CE
Coils & Electronics
BC
Bodies & Cavities
TD
Technical Data

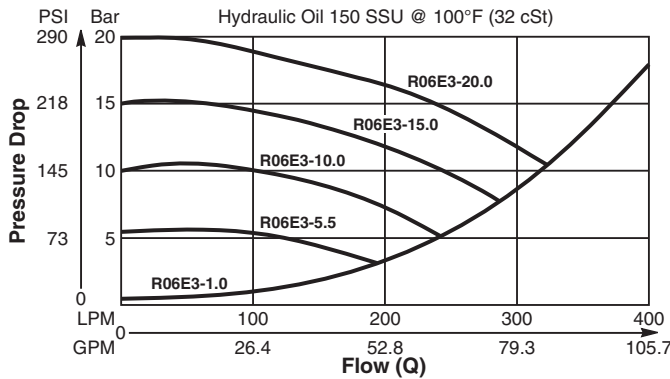
General Description

Spool Type , Normally Closed, Pilot to Close Logic Element. For additional information see Technical Tips on pages LE1-LE6.

Features

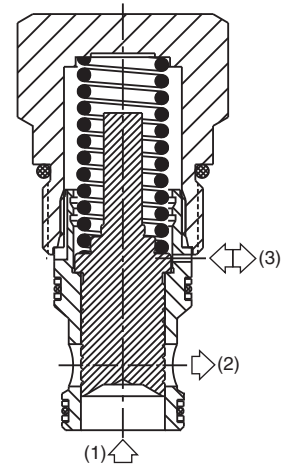
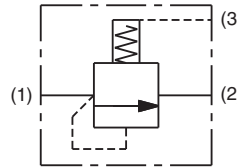
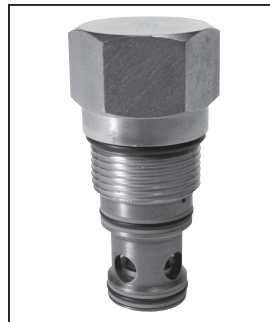
- High flow capacity
- Used as high flow switching or metering element
- Can be used as bleed off style pressure compensated flow regulator when used with restrictor
- More stable than poppet type
- Various switching pressures available
- 1:1 pilot pressure ratio
- Hardened working parts for maximum durability
- All external parts zinc plated

Performance Curve (Through cartridge only) Vented Open Pressure Drop vs. Flow 1 to 2

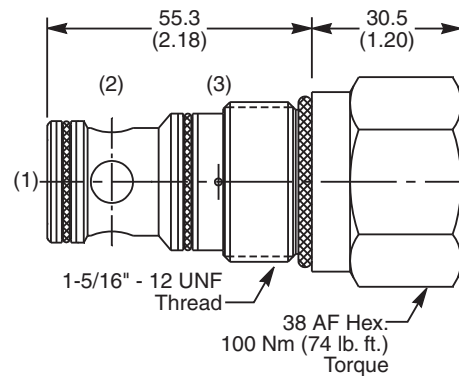


Specifications

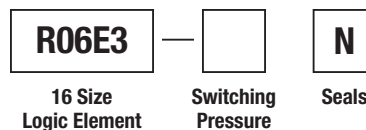
| | |
|---------------------------------------|--------------------------------------------------------------------------------------------------------|
| Rated Flow | 400 LPM (106 GPM) |
| Nominal Flow @ 7 Bar (100 PSI) | 270 LPM (71 GPM) |
| Maximum Inlet Pressure | 420 Bar (6000 PSI) |
| Leakage @ 150 SSU (32 cst) | 90 ml/min. @ 100 Bar (1450 PSI) |
| Switching Press. | See ordering information |
| Cartridge Material | All parts steel. All operating parts hardened steel. |
| Fluid Compatibility/Viscosity | Mineral-based or synthetic with lubricating properties at viscosities of 45 to 2000 SSU (6 to 420 cSt) |
| Filtration | ISO-4406 18/16/13, SAE Class 4 |
| Approx. Weight | .38 kg (.84 lbs.) |
| Cavity | C16-3S (See BC Section for more details) |
| Form Tool | Rougher NFT16-3SR Finisher NFT16-3SF |



Dimensions Millimeters (Inches)



Ordering Information



| Code | Switching Pressure Non Adjustable Preset |
|------|------------------------------------------|
| 5.5 | 5.5 Bar (80 PSI) Std. |
| 10.0 | 10.0 Bar (145 PSI) |
| 15.0 | 15.0 Bar (218 PSI) |

If no switching pressure is specified, valve will be supplied as R06E3-5.5N

| Code | Seals / Kit No. | Operating Temp. |
|------|--------------------------------|-----------------------------------|
| N | Nitrile, Buna-N / (SK30508N-1) | -34°C to +121°C (-30°F to +250°F) |

Order Bodies Separately See section BC

| LB10 | 726 | S |
|-----------|---------|---------------|
| Line Body | Porting | Body Material |

| Code | Porting |
|------|---------|
| 726 | 1" BSP |

| Code | Body Material |
|------|---------------|
| S | Steel |