

**General Description**

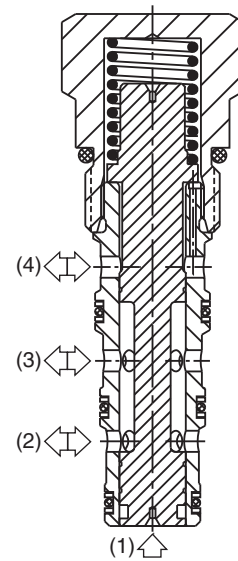
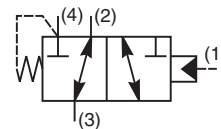
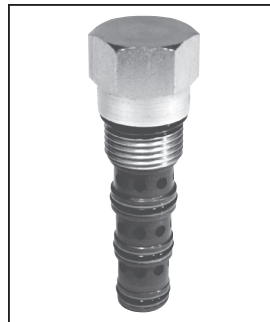
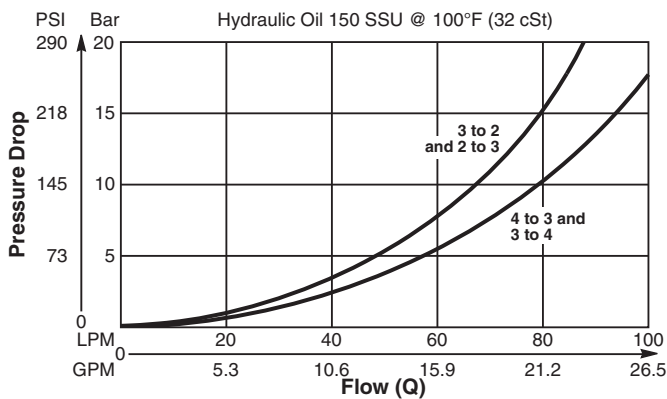
Pilot Operated Directional Valve, 3-Way External Pilot, Internal Vent.

**Features**

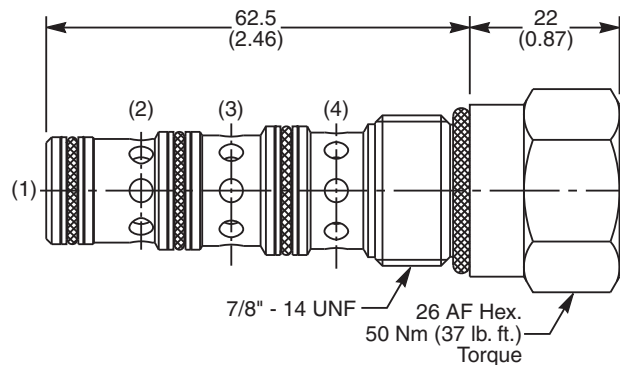
- High flow capacity
- Two switching pressures available
- Sealed pilot option available
- Hardened working parts for maximum durability
- All external parts zinc plated

**Performance Curve**

**Pressure Drop vs. Flow (Through cartridge only)**



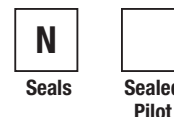
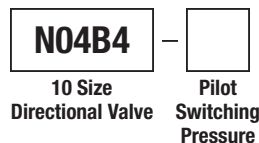
**Dimensions** Millimeters (Inches)



**Specifications**

<b>Rated Flow</b>	90 LPM (24 GPM)
<b>Nominal Flow @ 7 Bar (100 PSI)</b>	50 LPM (13 GPM)
<b>Maximum Inlet Pressure</b>	420 Bar (6000 PSI)
<b>Pilot Switching Pressure</b>	See ordering information
<b>Cartridge Material</b>	All parts steel. All operating parts hardened steel.
<b>Fluid Compatibility/ Viscosity</b>	Mineral-based or synthetic with lubricating properties at viscosities of 45 to 2000 SSU (6 to 420 cSt)
<b>Filtration</b>	ISO-4406 18/16/13, SAE Class 4
<b>Approx. Weight</b>	.17 kg (.37 lbs.)
<b>Cavity</b>	C10-4 (See BC Section for more details)

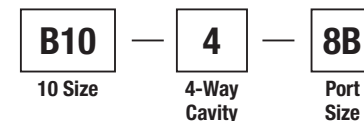
**Ordering Information**



*Order Bodies Separately  
 See section BC*

Code	Switching Pressure
5.0	5.0 Bar (73 PSI) Std.
9.0	9.0 Bar (131 PSI)

*If no switching pressure is specified, valve will be supplied as N04B4-5.0N*



Code	Sealed Pilot
Omit	If not required
S	Sealed Pilot

Port Size
1/2" BSP

Body Material
Steel

Code	Seals / Kit No.	Operating Temp.
N	Nitrile, Buna-N / (SK30506N-1)	-34°C to +121°C (-30°F to +250°F)

- CV** Check Valves
- SH** Shuttle Valves
- LM** Load/Motor Controls
- FC** Flow Controls
- PC** Pressure Controls
- LE** Logic Elements
- DC** Directional Controls
- SV** Solenoid Valves
- PV** Proportional Valves
- CE** Coils & Electronics
- BC** Bodies & Cavities
- TD** Technical Data