

CV  
 Check Valves  
 SH  
 Shuttle Valves  
 LM  
 Load/Motor Controls  
 FC  
 Flow Controls  
 PC  
 Pressure Controls  
 LF  
 Logic Elements  
 DC  
 Directional Controls  
 SV  
 Solenoid Valves  
 PV  
 Proportional Valves  
 CE  
 Coils & Electronics  
 BC  
 Bodies & Cavities  
 TD  
 Technical Data

### General Description

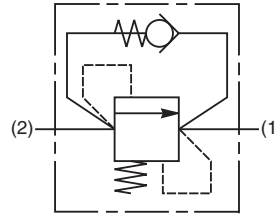
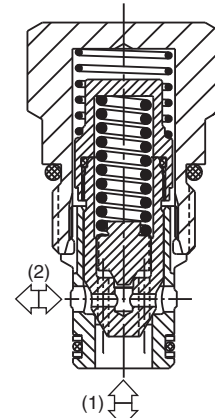
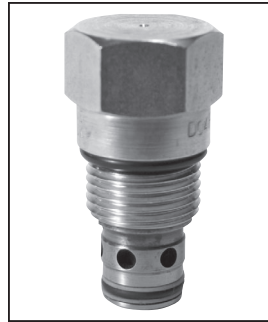
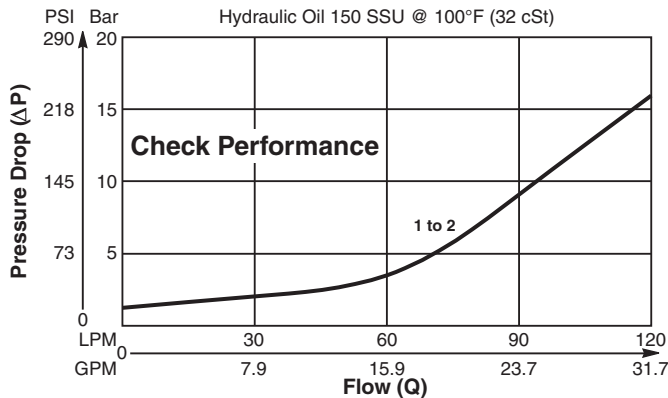
Poppet Type Check Valve with Relief Feature. For additional information see Technical Tips on pages CV1-CV2.

### Features

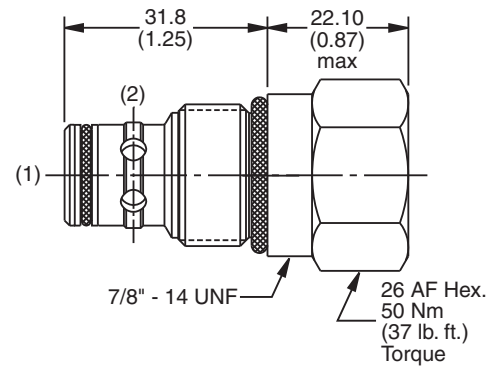
- Poppet type for minimal leakage - less than 3 drops/min.
- Relief feature to give thermal and shock relief protection
- Compact space saving design
- Hardened working parts for maximum durability
- Single and dual pilot pistons available to create pilot to open check
- Good contamination tolerance
- All external parts zinc plated

### Performance Curve

**Pressure Drop vs. Flow** (Through cartridge only)



### Dimensions



### Specifications

<b>Rated Flow</b>	130 LPM (40 GPM)
<b>Nominal Flow @ 7 Bar (100 PSI)</b>	72 LPM (19 GPM)
<b>Maximum Inlet Pressure</b>	420 Bar (6000 PSI)
<b>Leakage at 150 SSU (32 cSt)</b>	Less than 3 drops/min.
<b>Cartridge Material</b>	All parts steel. All operating parts hardened steel.
<b>Fluid Compatibility/ Viscosity</b>	Mineral-based or synthetic with lubricating properties at viscosities of 45 to 2000 SSU (6 to 420 cSt)
<b>Filtration</b>	ISO-4406 18/16/13, SAE Class 4
<b>Approx. Weight</b>	.13 kg (.29 lbs.)
<b>Cavity</b>	C10-2 (See BC Section for more details)

### Ordering Information

<b>D04F2</b> Check Valve	<b>2.5</b> Cracking Pressure (Check)	<b>□</b> Cracking Pressure (Relief)	<b>N</b> Seals
-----------------------------	---	--	-------------------

<b>Code</b>	<b>Cracking Pressure (Check)</b>
2.5	2.5 Bar (36 PSI)

<b>Code</b>	<b>Cracking Pressure (Relief)</b>
245	245 Bar (3553 PSI)
276	276 Bar (4000 PSI)

*Order Bodies Separately See section BC*

<b>B10</b> 10 Size	<b>2</b> 2-Way Cavity	<b>8B</b> Port Size
-----------------------	--------------------------	------------------------

<b>Code</b>	<b>Seals / Kit No.</b>	<b>Operating Temp.</b>	<b>Port Size</b>
N	Nitrile, Buna-N / (SK30503N-1)	-34°C to +121°C (-30°F to +250°F)	1/2" BSP

<b>Body Material</b>
Steel