

**General Description**

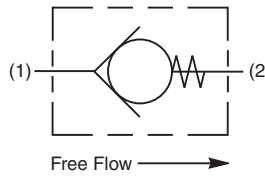
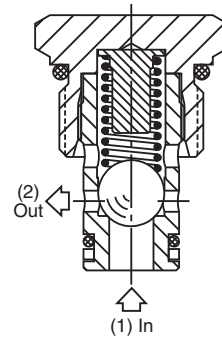
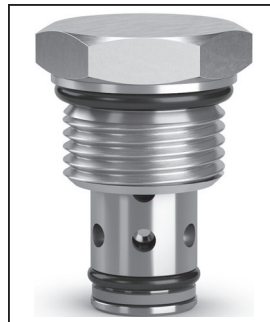
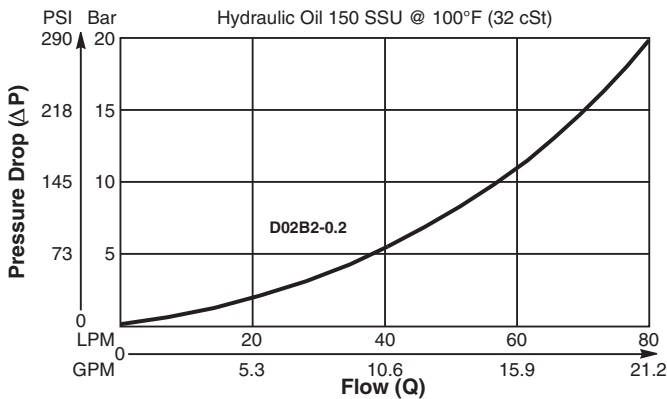
Ball Type Check Valve. For additional information see Technical Tips on pages CV1-CV2.

**Features**

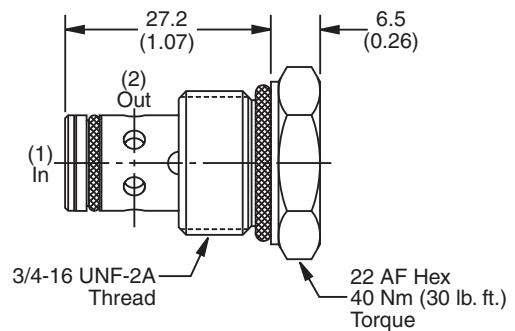
- Low leakage - less than 3 drops/min.
- Ball type construction for cost effective design
- Single and dual pilot pistons available to create pilot to open check
- Range of cracking pressures available - up to 25 Bar (362 PSI)
- Good contamination tolerance
- All external parts zinc plated

**Performance Curve**

**Pressure Drop vs. Flow** (Through cartridge only)



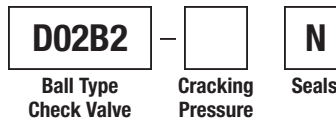
**Dimensions** Millimeters (Inches)



**Specifications**

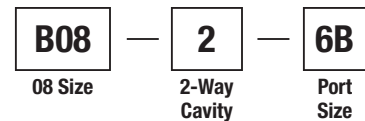
<b>Rated Flow</b>	80 LPM (21 GPM)
<b>Nominal Flow @ 7 Bar (100 PSI)</b>	45 LPM (12 GPM)
<b>Maximum Inlet Pressure</b>	420 Bar (6000 PSI)
<b>Leakage at 150 SSU (32 cSt)</b>	Less than 3 drops/min.
<b>Cartridge Material</b>	Steel operating parts, hardened steel ball.
<b>Fluid Compatibility/ Viscosity</b>	Mineral-based or synthetic with lubricating properties at viscosities of 45 to 2000 SSU (6 to 420 cSt)
<b>Filtration</b>	ISO-4406 18/16/13, SAE Class 4
<b>Approx. Weight</b>	.05 kg (.11 lbs.)
<b>Cavity</b>	C08-2 (See BC Section for more details)

**Ordering Information**



Order Bodies Separately  
 See section BC

Code	Cracking Pressure
0.2	0.2 Bar (3 PSI) Std.
1.0	1.0 Bar (15 PSI)
1.5	1.5 Bar (22 PSI)
2.1	2.1 Bar (30 PSI)
2.5	2.5 Bar (36 PSI)
3.4	3.4 Bar (50 PSI)
6.0	6.0 Bar (87 PSI)
10.0	10.0 Bar (145 PSI)



<b>Port Size</b>
3/8" BSP

Code	Seals / Kit No.	Operating Temp.
N	Nitrile, Buna-N / (SK30515N-1)	-34°C to +121°C (-30°F to +250°F)

<b>Body Material</b>
Steel

CV

Check Valves

SH

Shuttle Valves

LM

Load/Motor Controls

FC

Flow Controls

PC

Pressure Controls

LE

Logic Elements

DC

Directional Controls

SV

Solenoid Valves

PV

Proportional Valves

CE

Coils & Electronics

BC

Bodies & Cavities

TD

Technical Data