

**General Description**

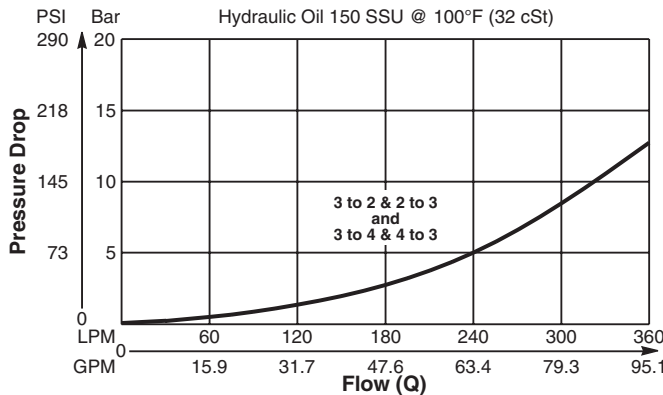
Pilot Operated Directional Valve, 3-Way, 2 Position, External Drain, Open Transition.

**Features**

- High flow capacity
- Used as high flow switching or metering element
- Range of spring settings available
- All external parts zinc plated

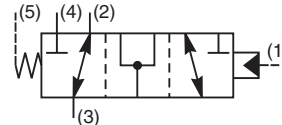
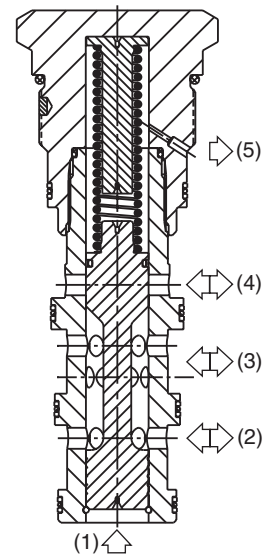
**Performance Curve**

**Pressure Drop vs. Flow** (Through cartridge only)

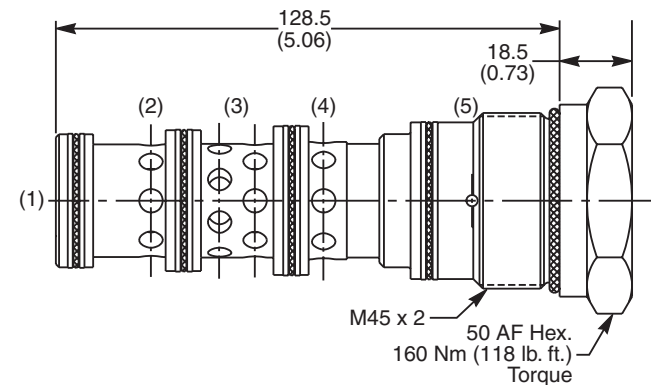


**Specifications**

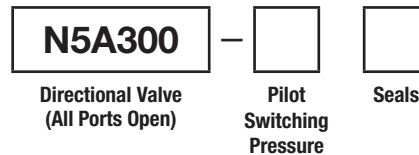
|                                       |   |
|---------------------------------------|---|
| <b>Rated Flow</b>                     | 400 LPM (105 GPM)   |
| <b>Nominal Flow @ 7 Bar (100 PSI)</b> | 270 LPM (71 GPM)  |
| <b>Maximum Inlet Pressure</b>         | 420 Bar (6000 PSI)  |
| <b>Pilot Switching Pressure</b>       | See ordering information  |
| <b>Cartridge Material</b>             | Steel operating parts, hardened steel spool.  |
| <b>Operating Temp. Range/Seals</b>    | -34°C to +121°C (Nitrile, Buna-N) (-30°F to +250°F)<br>-26°C to +204°C (Fluorocarbon) (-15°F to +400°F) |
| <b>Fluid Compatibility/Viscosity</b>  | Mineral-based or synthetic with lubricating properties at viscosities of 45 to 2000 SSU (6 to 420 cSt)  |
| <b>Filtration</b>                     | ISO-4406 18/16/13, SAE Class 4  |
| <b>Approx. Weight</b>                 | 1.00 kg (2.2 lbs.)  |
| <b>Cavity</b>                         | 100-1 (See BC Section for more details)   |



**Dimensions** Millimeters (Inches)



**Ordering Information**



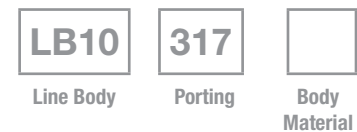
**Highlighted** represents preferred options that offer the shortest lead times. Other options may be available, but at extended lead times.

| Code | Switching Pressure     |
|------|------------------------|
| 6.9  | 6.9 Bar (100 PSI) Std. |
| 10.0 | 10.0 Bar (145 PSI)     |

If no switching pressure is specified, valve will be supplied as N5A300-6.9N

| Code | Seals / Kit No.                |
|------|--------------------------------|
| N    | Nitrile, Buna-N / (SK30065N-1) |
| V    | Fluorocarbon / (SK30065V-1)    |

Order Bodies Separately See section BC



| Code | Porting                             |
|------|-------------------------------------|
| 317  | 1-1/4" SAE (main)<br>3/8" SAE (aux) |

| Code | Body Material        |
|------|----------------------|
| S    | Steel (5000 PSI)     |
| A    | Aluminium (3000 PSI) |

|                      |
|----------------------|
| CV                   |
| Check Valves         |
| SH                   |
| Shuttle Valves       |
| LM                   |
| Load/Motor Controls  |
| FC                   |
| Flow Controls        |
| PC                   |
| Pressure Controls    |
| LE                   |
| Logic Elements       |
| DC                   |
| Directional Controls |
| MV                   |
| Manual Valves        |
| SV                   |
| Solenoid Valves      |
| PV                   |
| Proportional Valves  |
| CE                   |
| Coils & Electronics  |
| CB                   |
| Cartrpck Bodies      |
| BC                   |
| Bodies & Cavities    |
| TD                   |
| Technical Data       |