

General Description

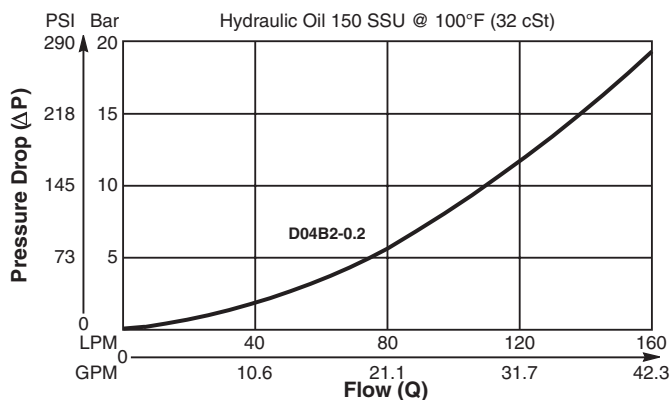
Ball Type Check Valve.
 For additional information see Technical Tips on pages CV1-CV2.

Features

- Low leakage - less than 3 drops/min.
- Ball type construction for cost effective design
- Single and dual pilot pistons available to create pilot to open check
- Range of cracking pressures available
- Good contamination tolerance
- All external parts zinc plated

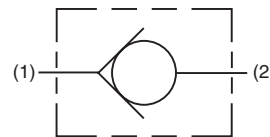
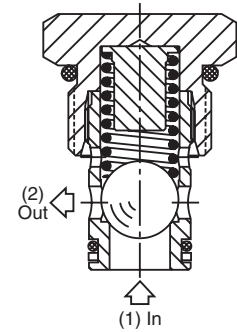
Performance Curve

Pressure Drop vs. Flow (Through cartridge only)



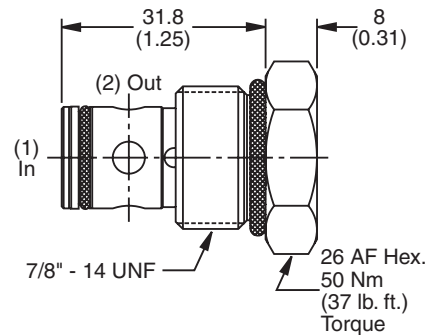
Specifications

| | |
|--------------------------------|---|
| Rated Flow | 160 LPM (42 GPM) |
| Nominal Flow @ 7 Bar (100 PSI) | 90 LPM (24 GPM) |
| Maximum Inlet Pressure | 420 Bar (6000 PSI) |
| Leakage at 150 SSU (32 cSt) | 3 drops/min. |
| Cartridge Material | Steel operating parts, hardened steel ball. |
| Operating Temp. Range/Seals | -34°C to +121°C (Nitrile, Buna-N) (-30°F to +250°F) -26°C to +204°C (Fluorocarbon) (-15°F to +400°F) |
| Fluid Compatibility/Viscosity | Mineral-based or synthetic with lubricating properties at viscosities of 45 to 2000 SSU (6 to 420 cSt) |
| Filtration | ISO-4406 18/16/13, SAE Class 4 |
| Approx. Weight | 0.08 kg (0.18 lbs.) |
| Cavity | C10-2 (See BC Section for more details) |

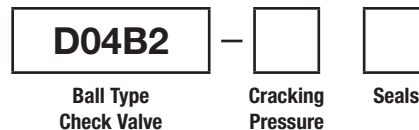


Free Flow →

Dimensions



Ordering Information

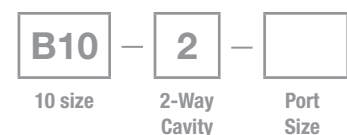


Highlighted represents preferred options that offer the shortest lead times. Other options may be available, but at extended lead times.

| Code | Cracking Pressure |
|-------------|-----------------------------|
| 0.0 | 0.0 Bar (0 PSI) |
| 0.2 | 0.2 Bar (3 PSI) Std. |
| 1.0 | 1.0 Bar (15 PSI) |
| 2.1 | 2.1 Bar (30 PSI) |
| 10.0 | 10.0 Bar (145 PSI) |
| 15.0 | 15.0 Bar (217 PSI) |

| Code | Seals / Kit No. |
|---|---------------------------------------|
| N | Nitrile, Buna-N / (SK30516N-1) |
| Fluorocarbon seal kits are available separately to convert external seals. If required, please order: (SK30516V-1) | |

Order Bodies Separately
 See section BC



| Code | Porting / Body Material |
|------|------------------------------|
| 8T | SAE-8 / Steel (5000 PSI) |
| A8T | SAE-8 / Aluminium (3000 PSI) |

| | |
|----|----------------------|
| CV | Check Valves |
| SH | Shuttle Valves |
| LM | Load/Motor Controls |
| FC | Flow Controls |
| PC | Pressure Controls |
| LE | Logic Elements |
| DC | Directional Controls |
| MV | Manual Valves |
| SV | Solenoid Valves |
| PV | Proportional Valves |
| CE | Coils & Electronics |
| CB | Cartrpак Bodies |
| BC | Bodies & Cavities |
| TD | Technical Data |