

- CV** Check Valves
- SH** Shuttle Valves
- LM** Load/Motor Controls
- FC** Flow Controls
- PC** Pressure Controls
- LE** Logic Elements
- DC** Directional Controls
- MV** Manual Valves
- SV** Solenoid Valves
- PV** Proportional Valves
- CE** Coils & Electronics
- CB** Cartridge Bodies
- BC** Bodies & Cavities
- TD** Technical Data

General Description

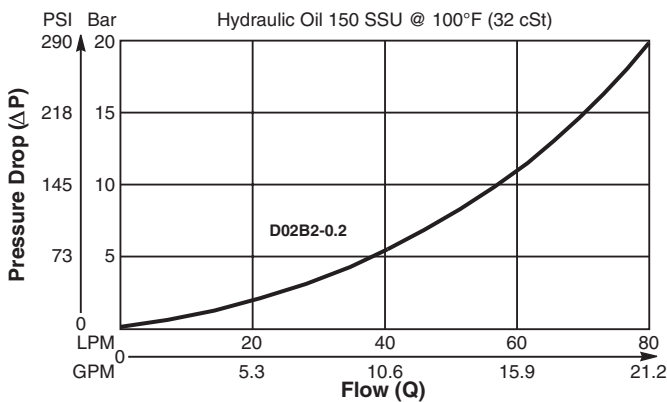
Ball Type Check Valve.
 For additional information see Technical Tips on pages CV1-CV2.

Features

- Low leakage - less than 3 drops/min.
- Ball type construction for cost effective design
- Single and dual pilot pistons available to create pilot to open check
- Range of cracking pressures available - up to 25 Bar (362 PSI)
- Good contamination tolerance
- All external parts zinc plated

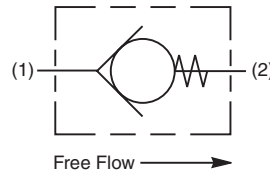
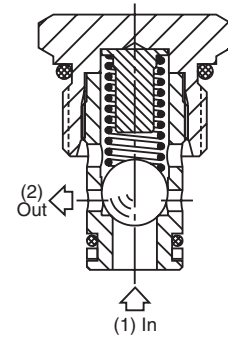
Performance Curve

Pressure Drop vs. Flow (Through cartridge only)

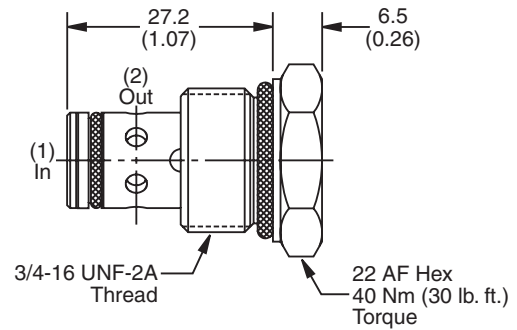


Specifications

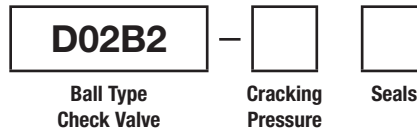
| | |
|--------------------------------|--|
| Rated Flow | 80 LPM (21 GPM) |
| Nominal Flow @ 7 Bar (100 PSI) | 45 LPM (12GPM) |
| Maximum Inlet Pressure | 420 Bar (6000 PSI) |
| Leakage at 150 SSU (32 cSt) | Less than 3 drops/min. |
| Cartridge Material | Steel operating parts hardened steel ball. |
| Operating Temp. Range/Seals | -34°C to +121°C (Nitrile Buna-N) (-30°F to +250°F) -26°C to +204°C (Fluorocarbon) (-15°F to +400°F) |
| Fluid Compatibility/Viscosity | Mineral-based or synthetic with lubricating properties at viscosities of 45 to 2000 SSU (6 to 420 cSt) |
| Filtration | ISO-4406 18/16/13, SAE Class 4 |
| Approx. Weight | 0.05 kg (0.11 lbs.) |
| Cavity | C08-2 (See BC Section for more details) |



Dimensions



Ordering Information



Highlighted represents preferred options that offer the shortest lead times. Other options may be available, but at extended lead times.

| Code | Cracking Pressure |
|------|----------------------|
| 0.2 | 0.2 Bar (3 PSI) Std. |
| 1.0 | 1.0 Bar (15 PSI) |
| 1.5 | 1.5 Bar (22 PSI) |
| 2.1 | 2.1 Bar (30 PSI) |
| 2.5 | 2.5 Bar (36 PSI) |
| 3.4 | 3.4 Bar (50 PSI) |
| 6.0 | 6.0 Bar (87 PSI) |
| 6.9 | 6.9 Bar (100 PSI) |
| 10.0 | 10.0 Bar (145 PSI) |
| 17.0 | 17.0 Bar (247 PSI) |
| 20.0 | 20.0 Bar (290 PSI) |
| 25.0 | 25.0 Bar (362 PSI) |

| Code | Seals / Kit No. |
|------|--------------------------------|
| N | Nitrile, Buna-N / (SK30515N-1) |

Fluorocarbon seal kits are available separately to convert external seals. If required, please order: (SK30515V-1)

Order Bodies Separately
 See section BC



| Code | Porting / Body Material |
|------|------------------------------|
| 6T | SAE-6 / Steel (5000 PSI) |
| A6T | SAE-6 / Aluminium (3000 PSI) |