

Technical Information

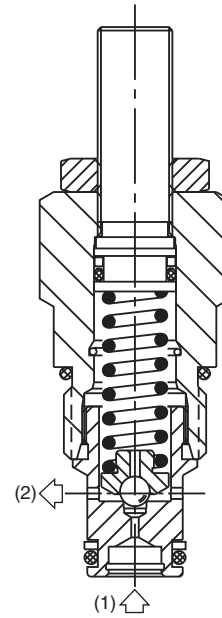
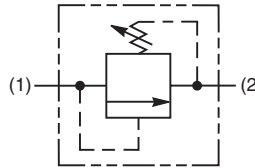
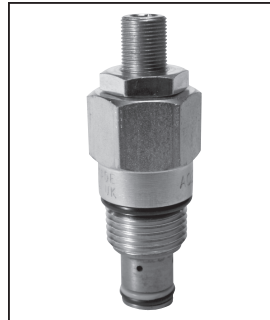
- CV** Check Valves
- SH** Shuttle Valves
- LM** Load/Motor Controls
- FC** Flow Controls
- PC** Pressure Controls
- LE** Logic Elements
- DC** Directional Controls
- MV** Manual Valves
- SV** Solenoid Valves
- PV** Proportional Valves
- CE** Coils & Electronics
- BC** Bodies & Cavities
- TD** Technical Data

General Description

Direct Acting Ball-Type Relief Valve. For additional information see Technical Tips on pages PC1-PC6.

Features

- Fast response
- Ideal for controlling ventable relief valves, or for thermal relief
- Hardened working parts for maximum durability
- Integral 250 micron inlet filter available
- All external parts zinc plated



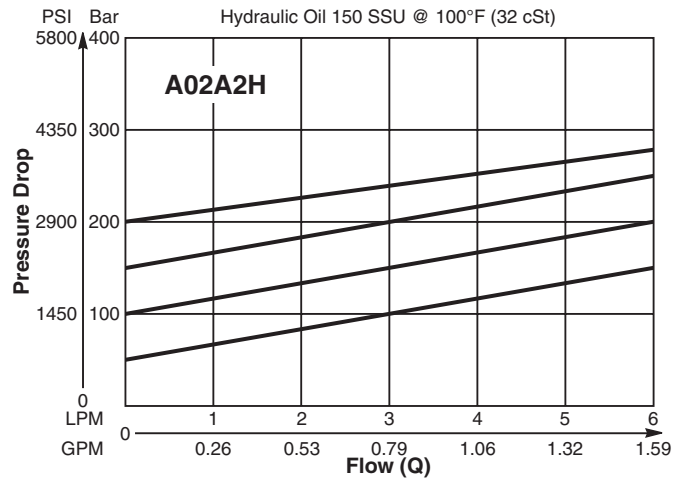
Specifications

| | |
|--------------------------------------|--------------------------------------------------------------------------------------------------------|
| Rated Flow | 6 LPM (1.6 GPM) |
| Maximum Inlet Pressure | H - 10-210 Bar (145-3000 PSI) P - 10-420 Bar (145-6000 PSI) |
| Maximum Pressure Setting | 420 Bar (6000 PSI) |
| Sensitivity: Pressure/Turn | H 30 Bar (435 PSI) P 55 Bar (800 PSI) |
| Maximum Tank Pressure | 420 Bar (6000 PSI) |
| Leakage at 150 SSU (32 cSt) | 5 drops/min. @ 100 Bar (1450 PSI) |
| Cartridge Material | All parts steel. All operating parts hardened steel. |
| Operating Temp. Range/Seals | -34°C to +121°C (Nitrile) (-30°F to +250°F) -26°C to +204°C (Fluorocarbon) (-15°F to +400°F) |
| Fluid Compatibility/Viscosity | Mineral-based or synthetic with lubricating properties at viscosities of 45 to 2000 SSU (6 to 420 cSt) |
| Filtration | ISO-4406 18/16/13, SAE Class 4 |
| Approx. Weight | 0.11 kg (0.24 lbs.) |
| Cavity | C08-2 (See BC Section for more details) |
| Form Tool | Rougher None Finisher NFT08-2F |

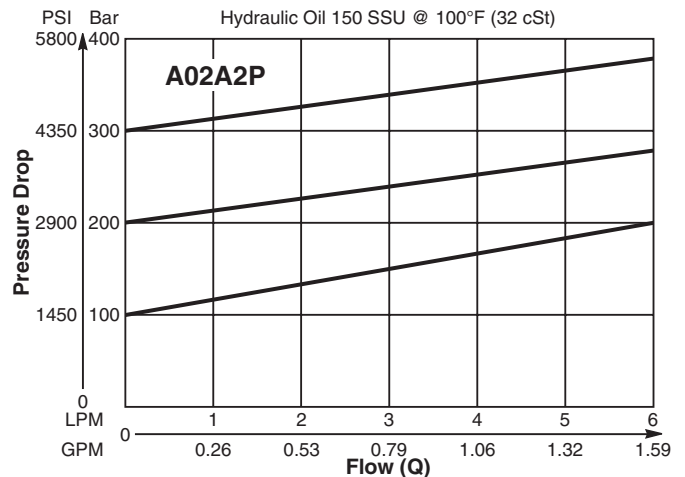
Performance Curves

(Pressure rise through cartridge only)

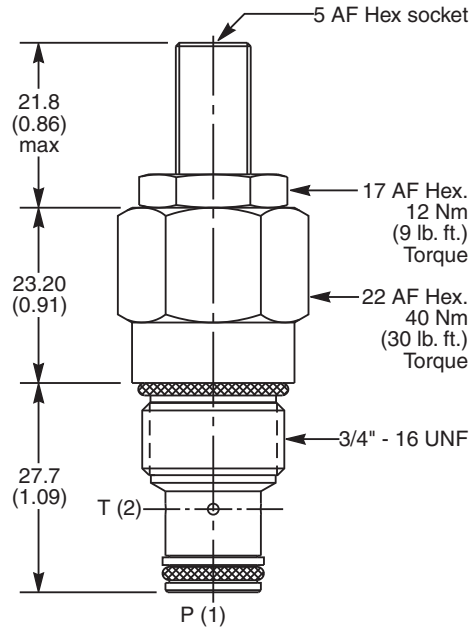
Flow vs. Inlet Pressure



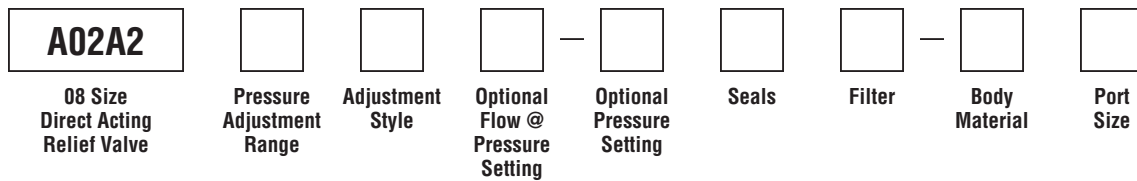
Flow vs. Inlet Pressure



Dimensions Millimeters (Inches)



Ordering Information



| Code | Pressure Adjustment Range |
|------|-------------------------------|
| H | 10 - 210 Bar (145 - 3000 PSI) |
| P | 10 - 420 Bar (145 - 6000 PSI) |

| Code | Optional Pressure Setting |
|--------|-----------------------------------------------------------------|
| | Specify setting if required (Bar) |
| A02A2H | Standard Setting: 100 Bar (1400 PSI) @ 0.5 LPM (0.13 GPM) |
| A02A2P | Standard Setting: 200 Bar (2900 PSI) @ 0.5 LPM (0.13 GPM) |

| Code | Body Material |
|------|---------------|
| Omit | Steel |
| A | Aluminum |

| Code | Adjustment Style / Kit No. |
|------|-------------------------------|
| Z | Screw Adjust (Std.) |
| W | Knob Adjust (ASV014975) |
| T | Tamper Resistant Cap (TC1130) |

| Code | Port Size | Body Part No. |
|------|----------------|---------------|
| Omit | Cartridge Only | |
| 4T | SAE-4 | (B08-2-*4T) |
| 6T | SAE-6 | (B08-2-*6T) |

* Add "A" for aluminum, omit for steel.

| Optional Flow @ Pressure Setting | |
|------------------------------------------------------------------------------------------------------------|--|
| If you require a maximum pressure setting at a flow rate, please enter it here in Liters per minute (LPM). | |
| Standard setting: 0.5 LPM (0.13 GPM) | |

| Code | Seals / Kit No. |
|------|---------------------------------------|
| N | Nitrile, Buna-N (Std.) / (SK30515N-1) |
| V | Fluorocarbon / (SK30515V-1) |

| Code | Filter |
|------|---------------------------|
| Omit | Omit for no filter (Std.) |
| F | 250 micron inlet filter |