

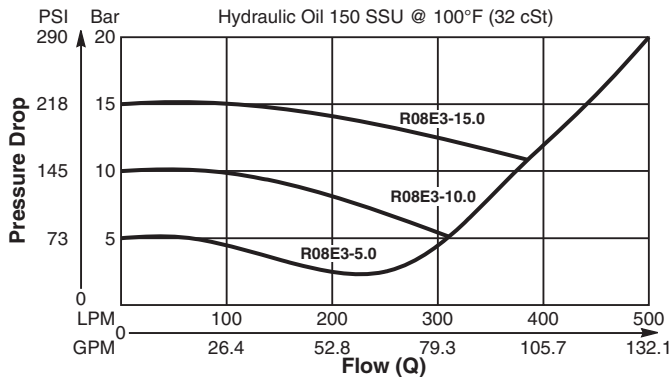
General Description

Spool Type , Normally Closed, Pilot to Close Logic Element. For additional information see Technical Tips on pages LE1-LE6.

Features

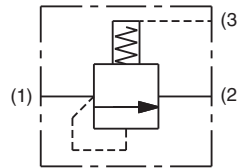
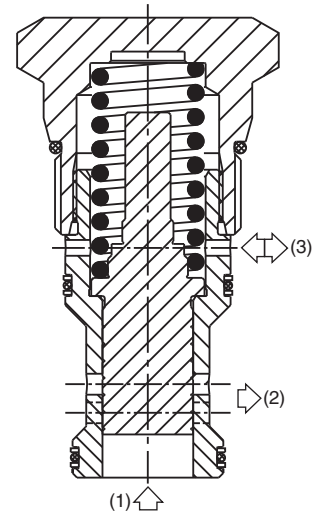
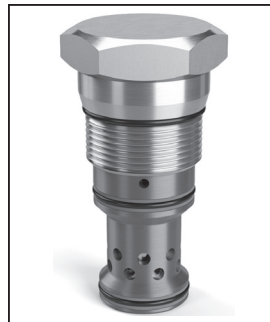
- High flow capacity
- Can be used as high flow switching or metering element
- Can be used as bleed off style pressure compensated flow regulator when used with restrictor
- Various switching pressures available
- 1:1 pilot pressure ratio
- Hardened working parts for maximum durability
- All external parts zinc plated

**Performance Curve (Through cartridge only)
Vented Open Pressure Drop vs. Flow 1 to 2**

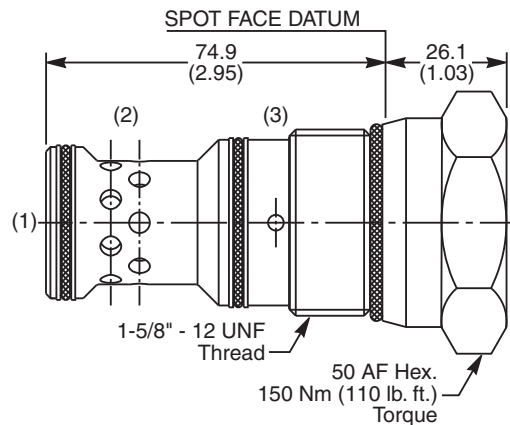


Specifications

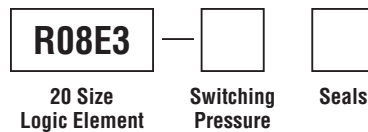
| | |
|---------------------------------------|--|
| Rated Flow | 500 LPM (132 GPM) |
| Nominal Flow @ 7 Bar (100 PSI) | 340 LPM (90 GPM) |
| Maximum Inlet Pressure | 420 Bar (6000 PSI) |
| Leakage @ 150 SSU (32 cst) | 90 ml/min. @ 100 Bar (1450 PSI) |
| Switching Press. | See ordering information |
| Cartridge Material | All parts steel. All operating parts hardened steel. |
| Operating Temp. Range/Seals | -34°C to +121°C (Nitrile) (-30°F to +250°F) -26°C to +204°C (Fluorocarbon) (-15°F to +400°F) |
| Fluid Compatibility/Viscosity | Mineral-based or synthetic with lubricating properties at viscosities of 45 to 2000 SSU (6 to 420 cSt) |
| Filtration | ISO-4406 18/16/13, SAE Class 4 |
| Approx. Weight | .69 kg (1.52 lbs.) |
| Cavity | C20-3S (See BC Section for more details) |
| Form Tool | Rougher NFT20-3SR Finisher NFT20-3SF |



Dimensions Millimeters (Inches)



Ordering Information



| Code | Switching Pressure Non Adjustable Preset |
|------|--|
| 5.0 | 5.0 Bar (73 PSI) Std. |
| 10.0 | 10.0 Bar (145 PSI) |
| 15.0 | 15.0 Bar (218 PSI) |
| 20.0 | 20.0 Bar (290 PSI) |

| Code | Seals / Kit. No. |
|------|---------------------------------------|
| N | Nitrile, Buna-N (Std.) / (SK30512N-1) |
| V | Fluorocarbon / (SK30512V-1) |

If no switching pressure is specified, valve will be supplied as R06E3-5.0N

- CV** Check Valves
- SH** Shuttle Valves
- LM** Load/Motor Controls
- FC** Flow Controls
- PC** Pressure Controls
- LE** Logic Elements
- DC** Directional Controls
- MV** Manual Valves
- SV** Solenoid Valves
- PV** Proportional Valves
- CE** Coils & Electronics
- BC** Bodies & Cavities
- TD** Technical Data