

Technical Information

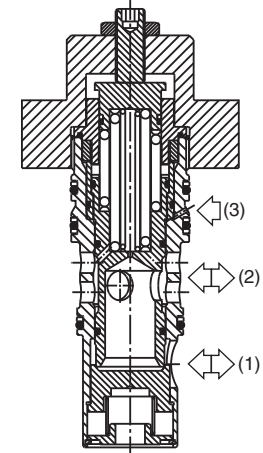
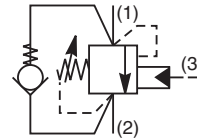
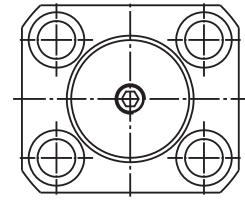
- CV Check Valves
- SH Shuttle Valves
- LM Load/Motor Controls
- FC Flow Controls
- PC Pressure Controls
- LE Logic Elements
- DC Directional Controls
- MV Manual Valves
- SV Solenoid Valves
- PV Proportional Valves
- CE Coils & Electronics
- BC Bodies & Cavities
- TD Technical Data

General Description

Threaded Cartridge Style Counterbalance Valve. Pilot assisted, designed for motion control applications. For additional information see Technical Tips on pages LM1-LM4.

Features

- Poppet construction for minimal leakage
- Incorporates direct acting relief valve for overload protection, and reverse check valve, saving space and minimizing installation cost
- Two pilot ratios available, 3:1 for cylinders and 8:1 for motor control
- Hardened working parts for maximum durability
- Adjustable and tamper resistant versions also available
- All external parts zinc plated

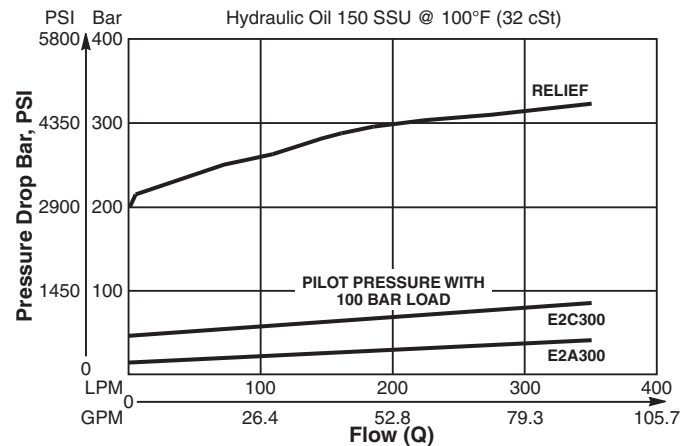


Specifications

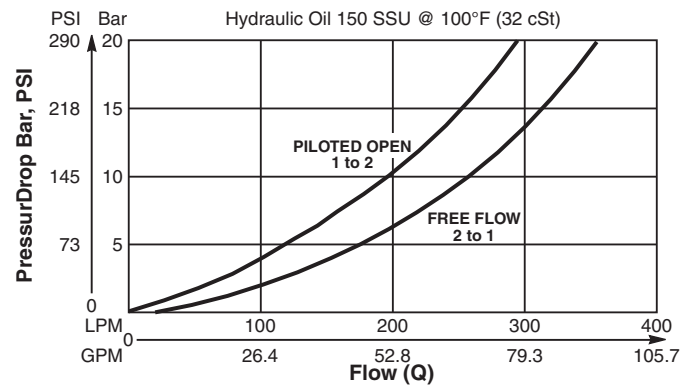
| | |
|---------------------------------------|--|
| Rated Flow | 350 LPM (92 GPM) |
| Pressure | 50 - 350 Bar (725 - 5000 PSI) |
| Sensitivity: Pressure/Turn | 45 Bar (653 PSI) |
| Pilot Ratio | E2A300 - 8 : 1 E2C300 - 3 : 1 |
| Cartridge Material | All parts steel. All operating parts hardened steel. |
| Operating Temp. Range/Seals | -34°C to +121°C (Nitrile) (-30°F to +250°F) -26°C to +204°C (Fluorocarbon) (-15°F to +400°F) |
| Fluid Compatibility/ Viscosity | Mineral-based or synthetic with lubricating properties at viscosities of 45 to 2000 SSU (6 to 420 cSt) |
| Filtration | ISO-4406 18/16/13, SAE Class 4 |
| Approx. Weight | 1.44 kg (3.17 lbs.) |
| Cavity | 3K (See BC Section for more details) |

Performance Curves

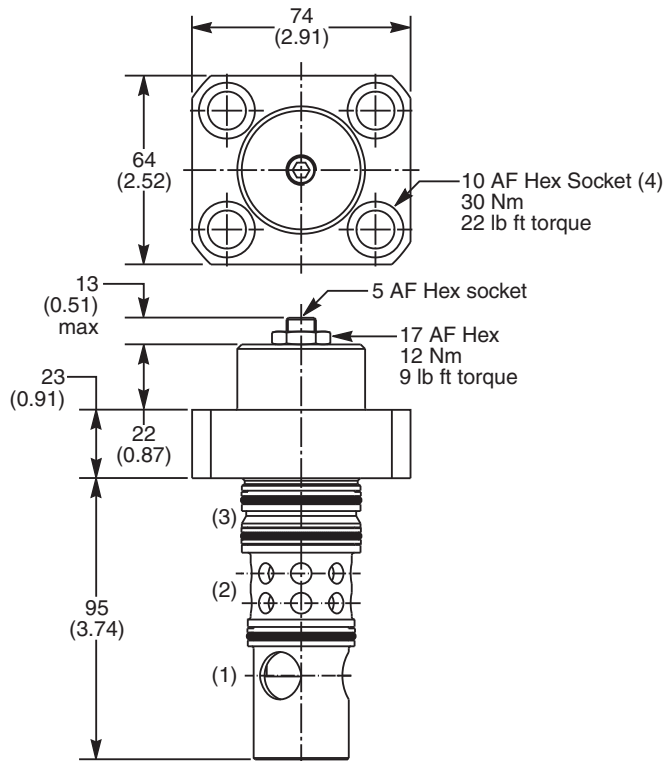
Relief & Pilot Performance 1 to 2



Pressure Drop vs Flow



Dimensions Millimeters (Inches)



Ordering Information

| | | | | | | |
|--------------------|-------------|------------|------------------|-------------------|-------|------------|
| E2 | | 300 | | | | MK2 |
| Load Control Valve | Pilot Ratio | | Adjustment Style | Cracking Pressure | Seals | |

| Code | Pilot Ratio |
|------|-------------|
| A | 8 : 1 |
| C | 3 : 1 |

| Code | Adjustment Style / Kit No. |
|------|----------------------------|
| Z | Screw Adjust |
| T | Tamper Resistant (TC1125) |

| Code | Cracking Pressure |
|------|--|
| | Omit for no setting (Standard)* Specify setting if required |

**Standard valve is set to crack at 215 Bar (3120 PSI). Valve to be set to 1.3 times maximum load induced pressure.*

| Code | Seals / Kit No. |
|------|---------------------------------------|
| N | Nitrile, Buna-N (Std.) / (SK30022N-1) |
| V | Fluorocarbon / (SK30022V-1) |

Order Bodies Separately

| | | |
|-------------|---------|---------------|
| LB10 | | |
| Line Body | Porting | Body Material |

| Code | Porting |
|------|-------------------------------------|
| 089 | 1-1/4" BSP (main) 1/4" BSP (aux) |

| Code | Body Material |
|------|---------------|
| A | Aluminum |
| S | Steel |

- CV** Check Valves
- SH** Shuttle Valves
- LM** Load/Motor Controls
- FC** Flow Controls
- PC** Pressure Controls
- LE** Logic Elements
- DC** Directional Controls
- MV** Manual Valves
- SV** Solenoid Valves
- PV** Proportional Valves
- CE** Coils & Electronics
- BC** Bodies & Cavities
- TD** Technical Data