

**Technical Information**

- CV** Check Valves
- SH** Shuttle Valves
- LM** Load/Motor Controls
- FC** Flow Controls
- PC** Pressure Controls
- LE** Logic Elements
- DC** Directional Controls
- MV** Manual Valves
- SV** Solenoid Valves
- PV** Proportional Valves
- CE** Coils & Electronics
- BC** Bodies & Cavities
- TD** Technical Data

**General Description**

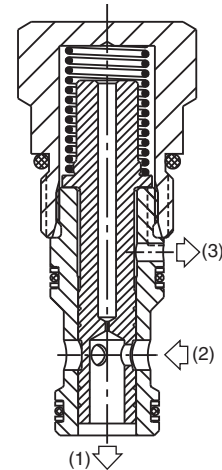
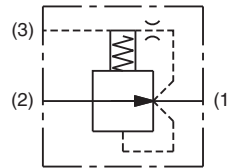
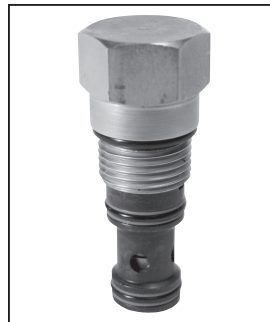
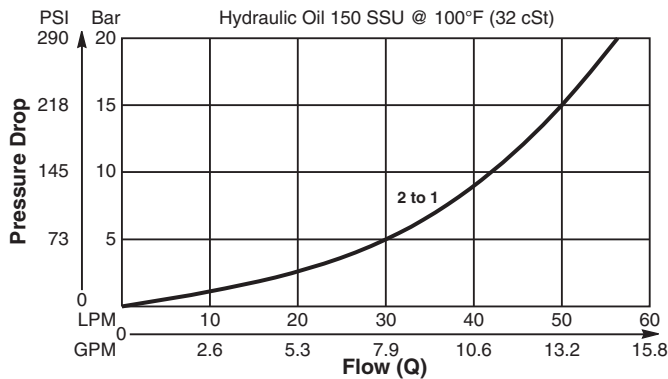
Spool Type , Normally Open, Vent to Close Logic Element. For additional information see Technical Tips on pages LE1-LE6.

**Features**

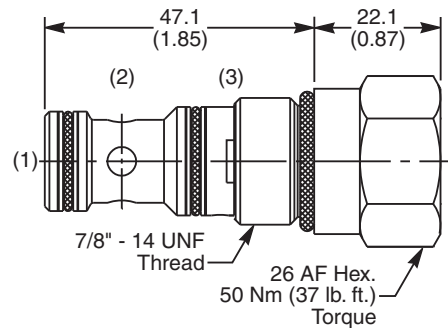
- High flow capacity
- Used as high flow switching or metering element
- Can be used as pressure regulator with mainstage controlled remotely by a pilot relief valve or a proportional valve
- Various switching pressures available
- 1:1 pilot ratio
- Hardened working parts for maximum durability
- All external parts zinc plated

**Performance Curve**

**Pressure Drop vs. Flow (Through cartridge only)**



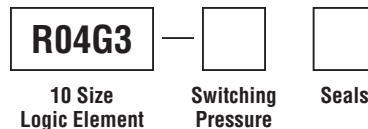
**Dimensions** Millimeters (Inches)



**Specifications**

|                                       |  |
|---------------------------------------|--|
| <b>Rated Flow</b>                     | 57 LPM (15 GPM)  |
| <b>Nominal Flow @ 7 Bar (100 PSI)</b> | 35 LPM (9.2 GPM)   |
| <b>Maximum Inlet Pressure</b>         | 420 Bar (6000 PSI)   |
| <b>Leakage @ 150 SSU (32 cst)</b>     | 50 ml/min. @ 100 Bar (1450 PSI)  |
| <b>Switching Press.</b>               | See ordering information   |
| <b>Cartridge Material</b>             | All parts steel. All operating parts hardened steel.   |
| <b>Operating Temp. Range/Seals</b>    | -34°C to +121°C (Nitrile) (-30°F to +250°F)<br>-26°C to +204°C (Fluorocarbon) (-15°F to +400°F)        |
| <b>Fluid Compatibility/Viscosity</b>  | Mineral-based or synthetic with lubricating properties at viscosities of 45 to 2000 SSU (6 to 420 cSt) |
| <b>Filtration</b>                     | ISO-4406 18/16/13, SAE Class 4   |
| <b>Approx. Weight</b>                 | .14 kg (.31 lbs.)  |
| <b>Cavity</b>                         | C10-3S (See BC Section for more details)   |
| <b>Form Tool</b>                      | Rougher NFT10-3SR<br>Finisher NFT10-3SF  |

**Ordering Information**



| Code | Switching Pressure Non Adjustable Preset |
|------|--|
| 1.0  | 1.0 Bar (14.5 PSI)                       |
| 5.0  | 5.0 Bar (73 PSI) Std.                    |
| 10.0 | 10.0 Bar (145 PSI)                       |
| 15.0 | 15.0 Bar (218 PSI)                       |
| 20.0 | 20.0 Bar (290 PSI)                       |

| Code | Seals / Kit. No.                      |
|------|---------------------------------------|
| N    | Nitrile, Buna-N (Std.) / (SK30504N-1) |
| V    | Fluorocarbon / (SK30504V-1)           |

*If no switching pressure is specified, valve will be supplied as R04G3-5.0N*