

General Description

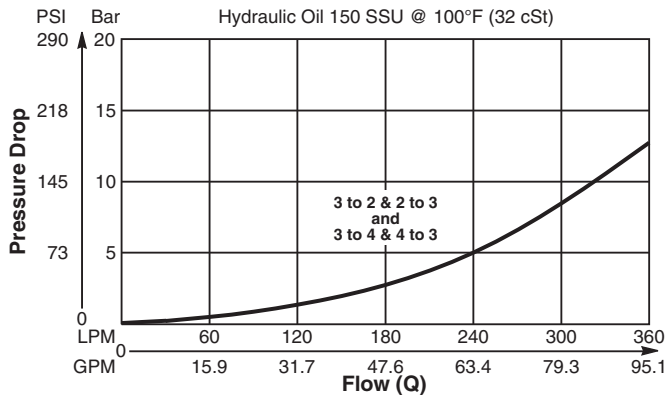
Pilot Operated Directional Valve, 3-Way, 2 Position, External Drain, Open Transition.

Features

- High flow capacity
- Used as high flow switching or metering element
- Range of spring settings available
- All external parts zinc plated

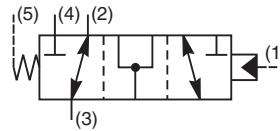
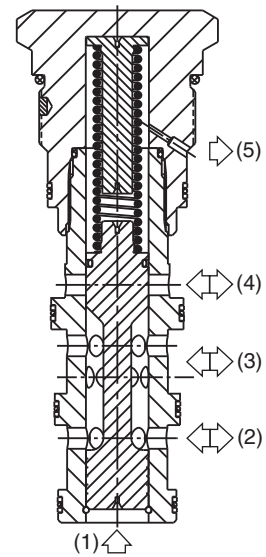
Performance Curve

Pressure Drop vs. Flow (Through cartridge only)

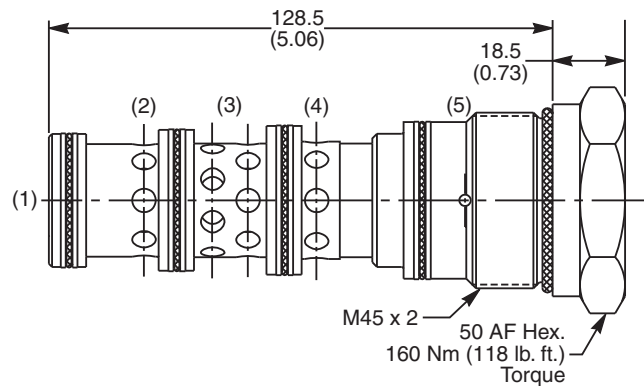


Specifications

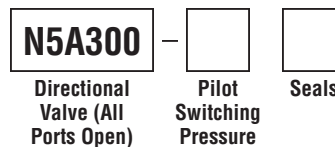
| | |
|---------------------------------------|---|
| Rated Flow | 400 LPM (105 GPM) |
| Nominal Flow @ 7 Bar (100 PSI) | 270 LPM (71 GPM) |
| Maximum Inlet Pressure | 420 Bar (6000 PSI) |
| Pilot Switching Pressure | See ordering information |
| Cartridge Material | Steel operating parts, hardened steel spool. |
| Operating Temp. Range/Seals | -34°C to +121°C (Nitrile, Buna-N) (-30°F to +250°F) -26°C to +204°C (Fluorocarbon) (-15°F to +400°F) |
| Fluid Compatibility/Viscosity | Mineral-based or synthetic with lubricating properties at viscosities of 45 to 2000 SSU (6 to 420 cSt) |
| Filtration | ISO-4406 18/16/13, SAE Class 4 |
| Approx. Weight | 1.00 kg (2.2 lbs.) |
| Cavity | 100-1 (See BC Section for more details) |



Dimensions Millimeters (Inches)



Ordering Information



| Code | Switching Pressure |
|------|------------------------|
| 3.0 | 3.0 Bar (44 PSI) |
| 6.9 | 6.9 Bar (100 PSI) Std. |
| 10.0 | 10.0 Bar (145 PSI) |

If no switching pressure is specified, valve will be supplied as N5A300-6.9N

| Code | Seals / Kit No. |
|------|--------------------------------|
| N | Nitrile, Buna-N / (SK30065N-1) |
| V | Fluorocarbon / (SK30065V-1) |

Order Bodies Separately



| Code | Porting |
|------|-------------------------------------|
| 317 | 1-1/4" SAE (main) 3/8" SAE (aux) |

| Code | Body Material |
|------|---------------|
| A | Aluminum |
| S | Steel |

- CV** Check Valves
- SH** Shuttle Valves
- LM** Load/Motor Controls
- FC** Flow Controls
- PC** Pressure Controls
- LE** Logic Elements
- DC** Directional Controls
- MV** Manual Valves
- SV** Solenoid Valves
- PV** Proportional Valves
- CE** Coils & Electronics
- BC** Bodies & Cavities
- TD** Technical Data