

**General Description**

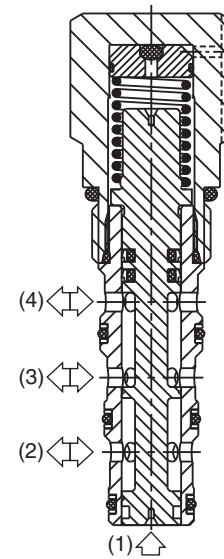
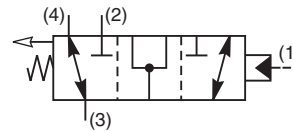
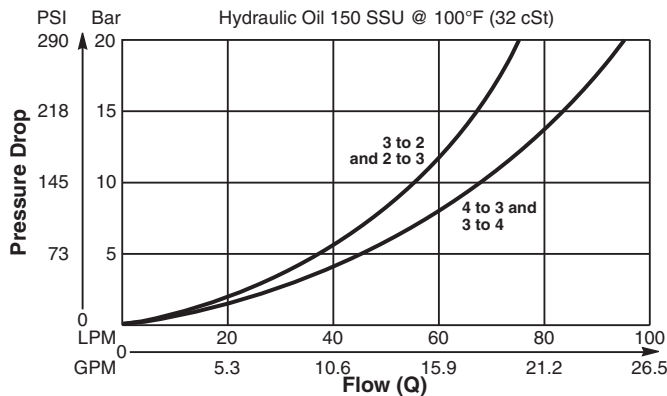
Pilot Operated Directional Valve, 3-Way External Pilot Vented to Atmosphere. Open Transition Feature.

**Features**

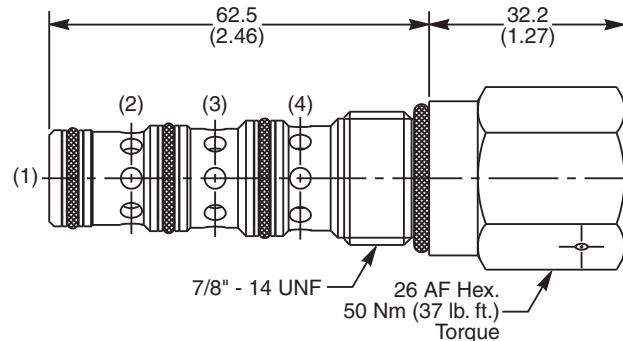
- High flow capacity
- Two switching pressures available
- Sealed pilot option available
- Hardened working parts for maximum durability
- All external parts zinc plated

**Performance Curve**

**Pressure Drop vs. Flow (Through cartridge only)**



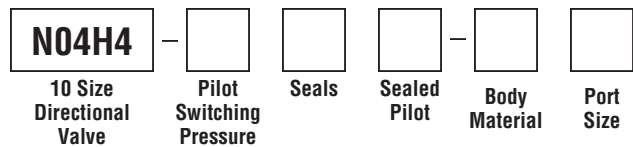
**Dimensions** Millimeters (Inches)



**Specifications**

<b>Rated Flow</b>	85 LPM (22.5 GPM)
<b>Nominal Flow @ 7 Bar (100 PSI)</b>	50 LPM (13 GPM)
<b>Maximum Inlet Pressure</b>	420 Bar (6000 PSI)
<b>Pilot Switching Pressure</b>	See ordering information
<b>Cartridge Material</b>	All parts steel. All operating parts hardened steel.
<b>Operating Temp. Range/Seals</b>	-34°C to +121°C (Nitrile, Buna-N) (-30°F to +250°F) -26°C to +204°C (Fluorocarbon) (-15°F to +400°F)
<b>Fluid Compatibility/Viscosity</b>	Mineral-based or synthetic with lubricating properties at viscosities of 45 to 2000 SSU (6 to 420 cSt)
<b>Filtration</b>	ISO-4406 18/16/13, SAE Class 4
<b>Approx. Weight</b>	.22 kg (.48 lbs.)
<b>Cavity</b>	C10-4 (See BC Section for more details)

**Ordering Information**



Code	Switching Pressure
9.0	9.0 Bar (130 PSI) Std.
15.0	15.0 Bar (218 PSI)

*If no switching pressure is specified, valve will be supplied as N04H4-9.0N*

Code	Seals / Kit No.
N	Nitrile, Buna-N / (SK30506N-1)
V	Fluorocarbon / (SK30506V-1)

Code	Sealed Pilot
Omit	If not required
S	Sealed Pilot

Code	Body Material
Omit	Steel
A	Aluminum

Code	Port Size	Body Part No.
Omit	Cartridge Only	
6T	SAE-6	(B10-4-*6T)
8T	SAE-8	(B10-4-*8T)

*\* Add "A" for aluminum, omit for steel.*