

General Description

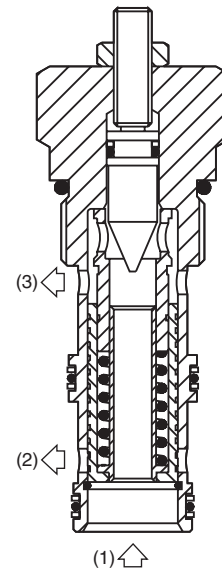
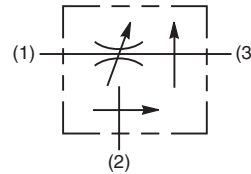
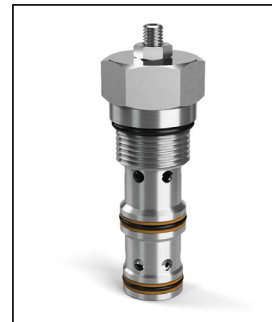
Priority Style, Pressure Compensated Flow Regulator Valve With Bypass.
 For additional information see Technical Tips on pages FC2-FC5.

Features

- Free reverse flow function
- High flow capacity
- Used for systems requiring priority flow such as steering systems
- Hardened working parts for maximum durability
- All external parts zinc plated

Specifications

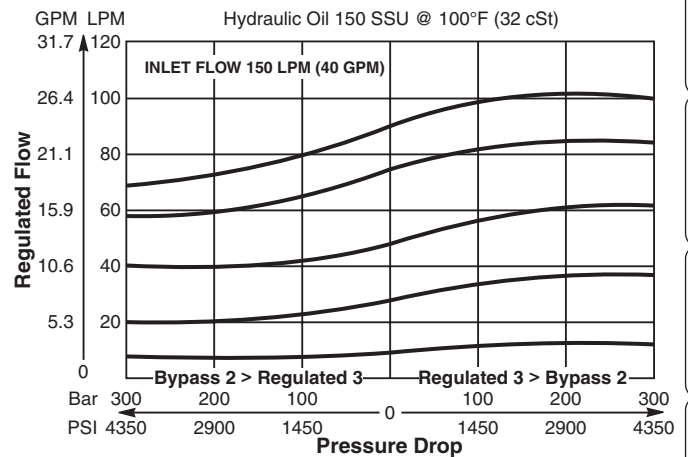
Rated Flow	150 LPM (40 GPM)
Maximum Regulated Flow	90 LPM (24 GPM)
Maximum Inlet Pressure	350 Bar (5000 PSI)
Cartridge Material	All parts steel. All operating parts hardened steel.
Operating Temp. Range/Seals	-34°C to +121°C (Nitrile) (-30°F to +250°F) -26°C to +204°C (Fluorocarbon) (-15°F to +400°F)
Fluid Compatibility/Viscosity	Mineral-based or synthetic with lubricating properties at viscosities of 45 to 2000 SSU (6 to 420 cSt)
Filtration	ISO-4406 18/16/13, SAE Class 4
Approx. Weight	0.45 kg (1.0 lbs.)
Cavity	3A (See BC Section for more details)



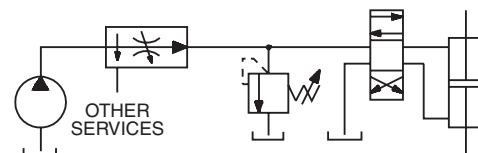
Performance Curves

Flow vs. Inlet Pressure (Through cartridge only)

Flow Regulating Performance



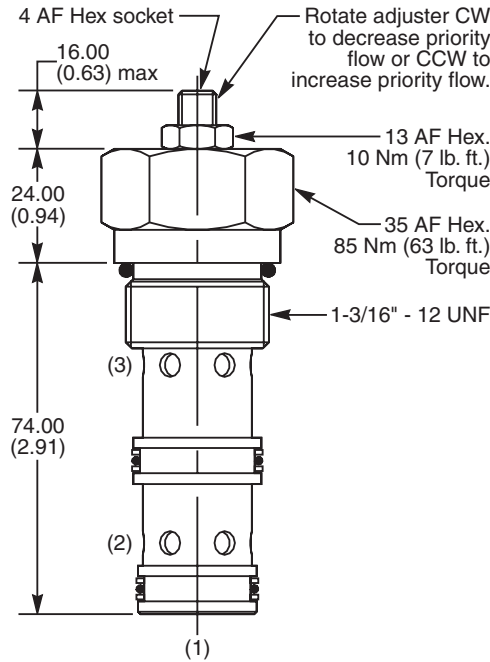
Application



Priority flow on steering circuit

- CV Check Valves
- SH Shuttle Valves
- LM Load/Motor Controls
- FC Flow Controls**
- PC Pressure Controls
- LE Logic Elements
- DC Directional Controls
- SV Solenoid Valves
- PV Proportional Valves
- CE Coils & Electronics
- BC Bodies & Cavities
- TD Technical Data

Dimensions Millimeters (Inches)



Ordering Information

J1A125	Z	N
Pressure Compensated Priority Flow Control Valve	Adjustment Style	Seals

Highlighted represents preferred options that offer the shortest lead times. Other options may be available, but at extended lead times.

Code	Adjustment Style
Z	Screw Adjust

Code	Seals
N	Nitrile

Standard valve has a flow setting of 25 LPM and an Inlet flow setting of 45 LPM.

Order Bodies Separately
 See section BC

LB10	066	S
Line Body	Porting	Body Material

Code	Porting
066	SAE16 /Steel (5000 PSI)

Kit	Part Number
Nitrile Seal	SK30011N-1
Fluorocarbon Seal	SK30011V-1

CV
Check Valves
SH
Shuttle Valves
LM
Load/Motor Controls
FC
Flow Controls
PC
Pressure Controls
LE
Logic Elements
DC
Directional Controls
SV
Solenoid Valves
PV
Proportional Valves
CE
Coils & Electronics
BC
Bodies & Cavities
TD
Technical Data