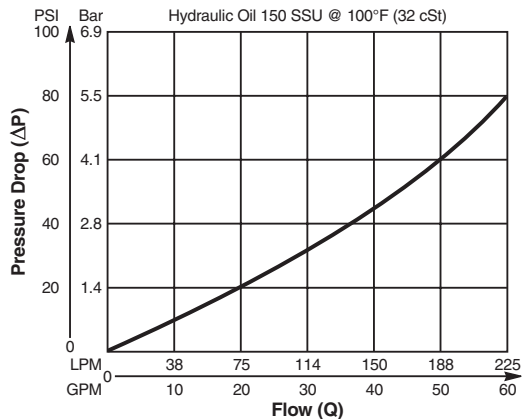


**Valve/Cavity Compatibility**

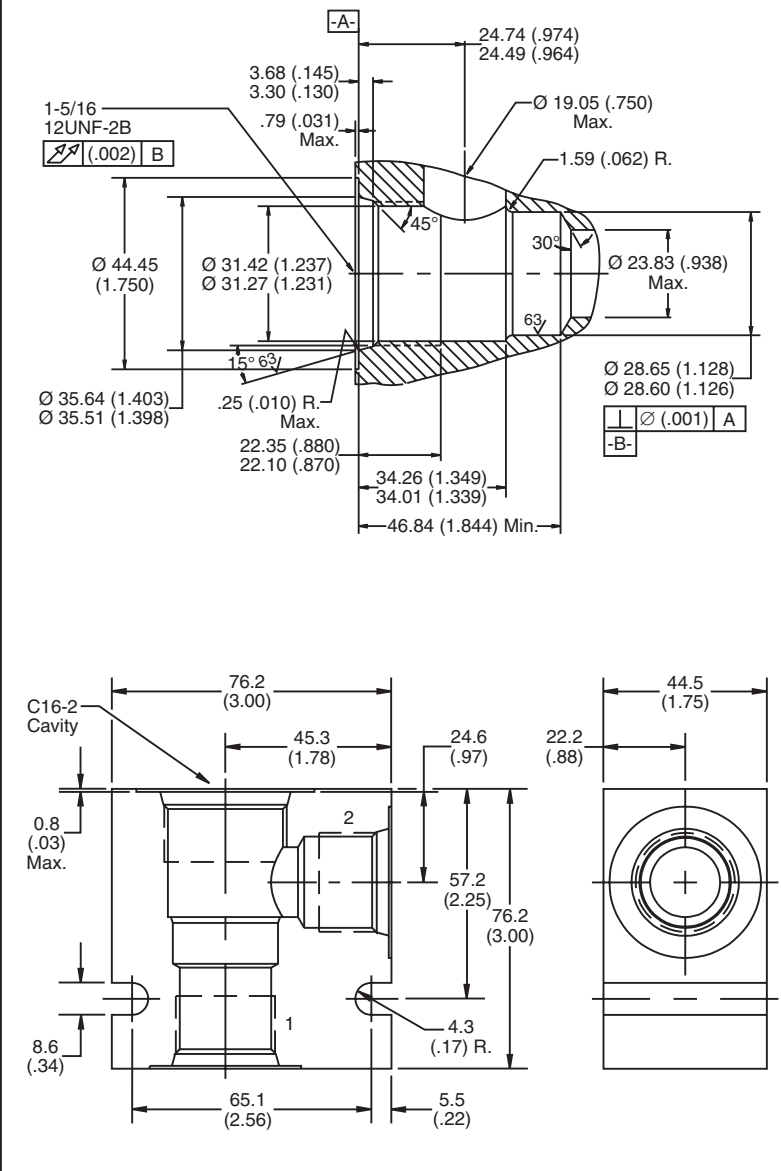
For additional information see Technical Tips on pages BC2-BC3.

|        |          | VALVE  |          |     |     |
|--------|----------|--------|----------|-----|-----|
|        |          | Parker | Waterman | FPS | CEC |
| CAVITY | Parker   | X      | X        |     |     |
|        | Waterman | X      | X        |     |     |
|        | FPS      |        |          | X   | X   |
|        | CEC      |        |          | X   | X   |

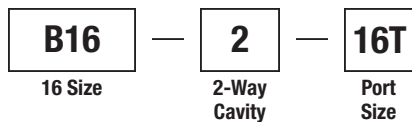
**Performance Curve**  
**Pressure Drop vs. Flow**



**Dimensions** Millimeters (Inches)



**Ordering Information**



| Code | Port Size                |
|------|--------------------------|
| 16T  | SAE - 16/Steel (5000PSI) |

Weight: 1.5 kg (3.4 lbs.)

- CV**  
Check Valves
- SH**  
Shuttle Valves
- LM**  
Load/Motor Controls
- FC**  
Flow Controls
- PC**  
Pressure Controls
- LE**  
Logic Elements
- DC**  
Directional Controls
- SV**  
Solenoid Valves
- PV**  
Proportional Valves
- CE**  
Coils & Electronics
- BC**  
Bodies & Cavities
- TD**  
Technical Data