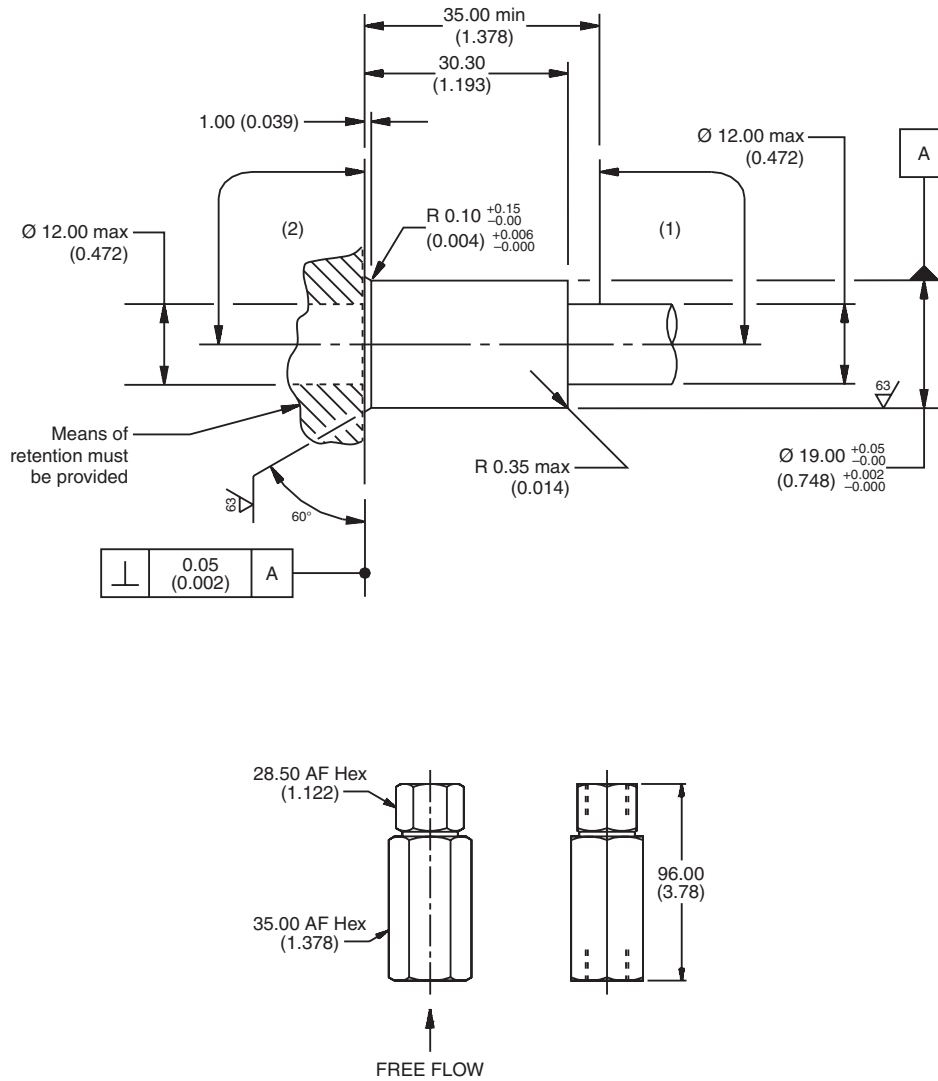


For additional information see Technical Tips on pages BC2-BC3.

Dimensions
 Millimeters (Inches)



Ordering Information

LB10	220	S
Line Body	Port Size	Body Material

Code	Port Size
220	1 SAE

Code	Body Material
S	Steel

***Please be advised that this is a non-core line body.**
 Additional lead-time and/or pricing requirements may exist when ordering.

- CV
Check Valves
- SH
Shuttle Valves
- LM
Load/Motor Controls
- FC
Flow Controls
- PC
Pressure Controls
- LE
Logic Elements
- DC
Directional Controls
- SV
Solenoid Valves
- PV
Proportional Valves
- CE
Coils & Electronics
- BC
Bodies & Cavities
- TD
Technical Data